



® 4242 Baldwin Boulevard  
 Corpus Christi, Texas  
 USA 78405-3399  
 Tel: 800-531-3111, 361-888-5591  
 Fax: 800-531-3108, 361-888-6510  
 www.hortondoors.com  
 The Automatic Choice

# ARCHITECTURAL DETAILS

## AUTOMATIC COMMERCIAL SLIDE DOORS

Profiler® Series 2000B Elite Belt Drive

A1.2

Type: 010 Single Slide P-X or X-P Surface Applied

July 11

### Standard Packages

Unit Width	Slide Opening	Wall Opening	Slide Panel Width
7'-0" (2134)	3'-0" (914)	3'-3 1/2" (1003)	3'-6" (1067)
8'-0" (2438)	3'-6" (1067)	3'-9 1/2" (1156)	4'-0" (1219)
8'-6" (2591)	3'-9" (1143)	4'-0 1/2" (1232)	4'-3" (1295)
9'-0" (2743)	4'-0" (1219)	4'-3 1/2" (1308)	4'-6" (1372)

**Unit Height:** 7'-6" (2286)      **Anodized Finish:** Clear or Dark Bronze  
**Glazing:** Standard unit prep'd for 1/4" (6) glass. Glass by others.  
**Threshold:** 1/2" (13) tall x 4" wide (See page A5.3).

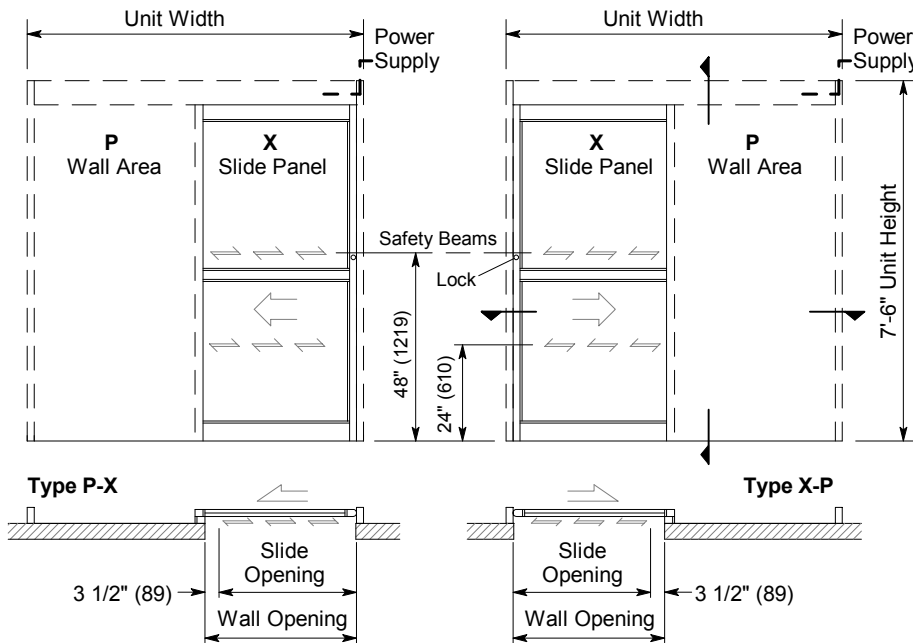
### Installation and Operation

- Door unit is surface mounted onto interior of finished wall. Finish floor not to exceed 1/4" out of level. (See page A.3)
- Electrical: Provide 120 VAC, 60 cycle, single phase, 15 amp service (in conduit) to each unit on dedicated 20 amp circuit breaker routed to header. Maximum current draw is 3.15 amps.
- Door actuated with motion sensor mounted over door opening at interior and exterior for detection of traffic in each direction. Door closes after time delay expires. (See page A.4)
- Manual Locking: Exterior keylock and interior thumbturn provided at RH vertical strike rail. (Optional fail-safe or fail-secure autolock)

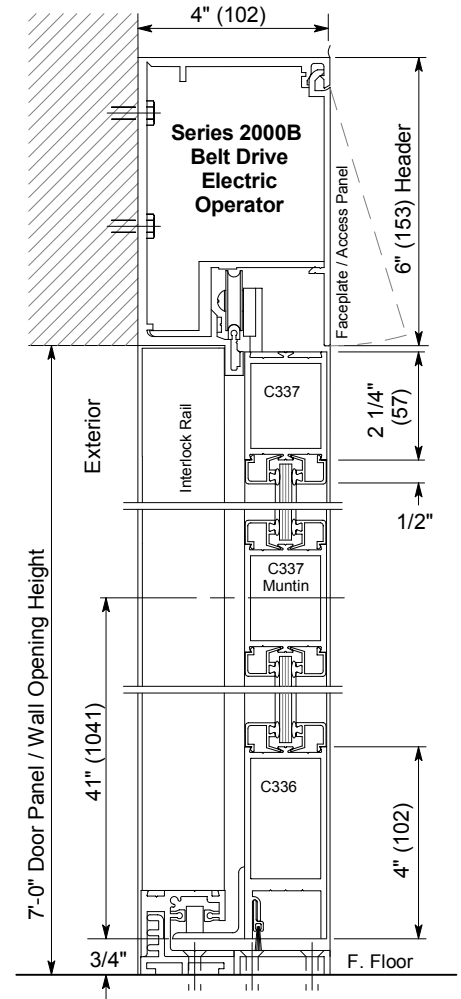
### Options

- Custom unit widths between 7'-0" & 9'-0".
- Custom unit height to 8'-6".
- Custom mid-rails, bottom rails and jambs.
- Medium or wide stile construction (slide opening will be reduced).
- Custom anodized or paint finish or stainless steel cladding.

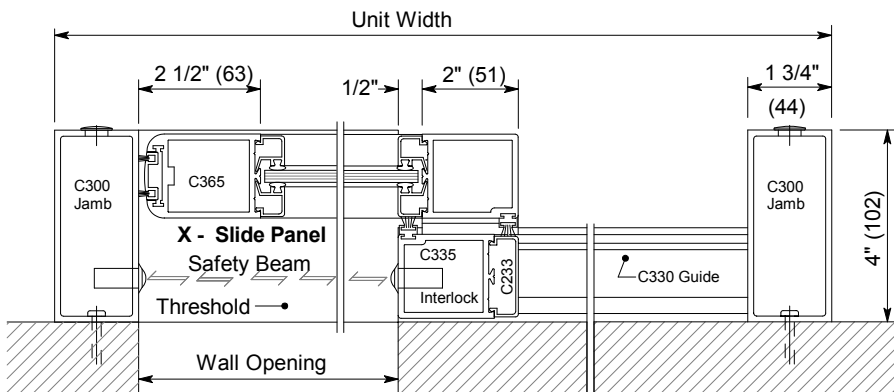
See details for options starting on p. A5.0 and Architectural Specifications on p. A6.7.



Exterior Elevation and Floor Plan



Vertical Section  
 Door shown in open position



Horizontal Section  
 Type X-P shown, P-X opposite

Horton Automatics reserves the right to improve the product and change its specifications without notice. Dimensions given in U.S. inches followed by millimeters in parenthesis.