

Standard Packages

Unit Width	Slide Opening	Breakout / Wall Opening	Slide Panel Width
7'-0" (2134)	3'-0" (914)	3'-3 1/2" (1003)	3'-6" (1067)
8'-0" (2438)	3'-6" (1067)	3'-9 1/2" (1156)	4'-0" (1219)
8'-6" (2591)	3'-9" (1143)	4'-0 1/2" (1232)	4'-3" (1295)
9'-0" (2743)	4'-0" (1219)	4'-3 1/2" (1308)	4'-6" (1372)

Unit Height: 7'-6" (2286) **Anodized Finish:** Clear or Dark Bronze
Glazing: Standard unit prep'd for 1/4" (6) glass. Glass by others.
Threshold: 1/2" (13) tall x 4" (102) wide (See page A5.3).

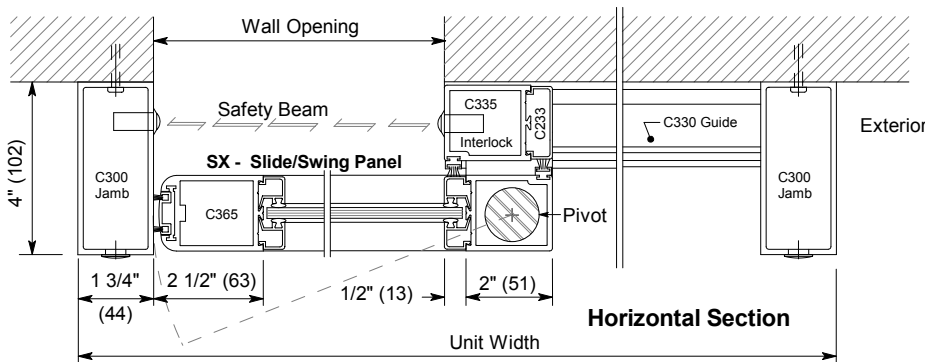
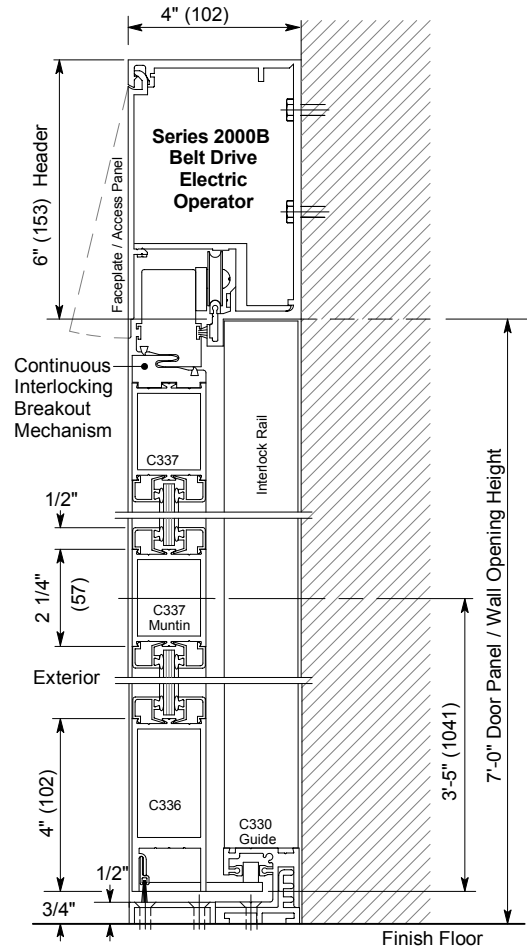
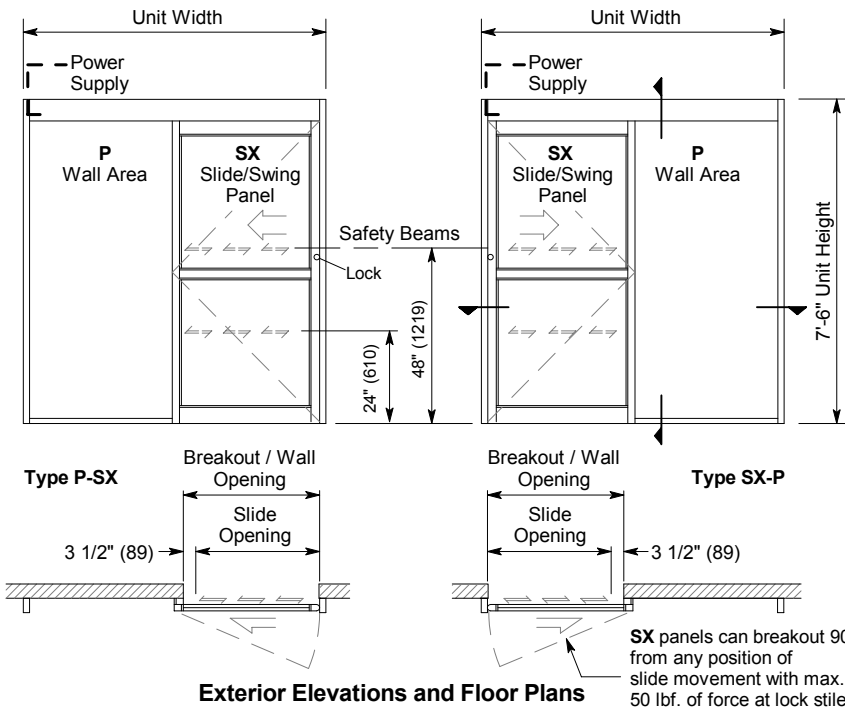
Installation and Operation

- Door unit is surface mounted onto exterior of finished wall. Finish floor not to exceed 1/4" out of level. (See page A.3)
- Electrical: Provide 120 VAC, 60 cycle, single phase, 15 amp service (in conduit) to each unit on dedicated 20 amp circuit breaker routed to header. Maximum current draw is 3.15 amps.
- Door actuated with motion sensor mounted over door opening at interior and exterior for detection of traffic in each direction. Door closes after time delay expires. (See page A.4)
- Manual Locking: Exterior keylock and interior thumbturn provided at RH vertical strike rail. (Optional fail-safe or fail-secure autolock)

Options

- Custom unit widths between 7'-0" & 9'-0".
- Custom unit height to 8'-6".
- Custom mid-rails, bottom rails and jambs.
- Medium or wide stile construction (slide opening will be reduced).
- Custom anodized or paint finish or stainless steel cladding.

See details for option starting on p. A5.0. and Architectural Specifications on p. A6.7.



Vertical Section
Door shown in open position

Type SX-P shown, P-SX opposite