



® 4242 Baldwin Boulevard  
 Corpus Christi, Texas  
 USA 78405-3399  
 Tel: 800-531-3111, 361-888-5591  
 Fax: 800-531-3108, 361-888-6510  
**www.hortondoors.com**  
*The Automatic Choice*

# ARCHITECTURAL DETAILS

## AUTOMATIC COMMERCIAL SLIDE DOORS

**Profiler® Series 2000B Elite Belt Drive**

**A1.13**

**Type: 110 Dual Single Slide SX-O-O-SX**

July 11

### Standard Packages

Unit Width	Slide Openings	Breakout Openings	Slide Panel Widths	Combined Sidelite Width	Rough Opening Width
14'-0" (4267)	3'-0" (914)	3'-3 1/2" (1003)	3'-6" (1067)	7'-1 1/2" (2172)	14'-0 1/2" (4280)
16'-0" (4877)	3'-6" (1067)	3'-9 1/2" (1156)	4'-0" (1219)	8'-1 1/2" (2451)	16'-0 1/2" (4877)

<b>Unit Height:</b> 7'-6" (2286)	<b>Rough Opening Height:</b> 7'-6 1/4" (2292)	<b>Anodized Finish:</b> Clear or Dark Bronze
<b>Glazing:</b> Standard unit prep'd for 1/4" (6) glass. Glass by others.		
<b>Threshold:</b> 1/2" (13) tall x 4" (102) wide (See page A6.3).		

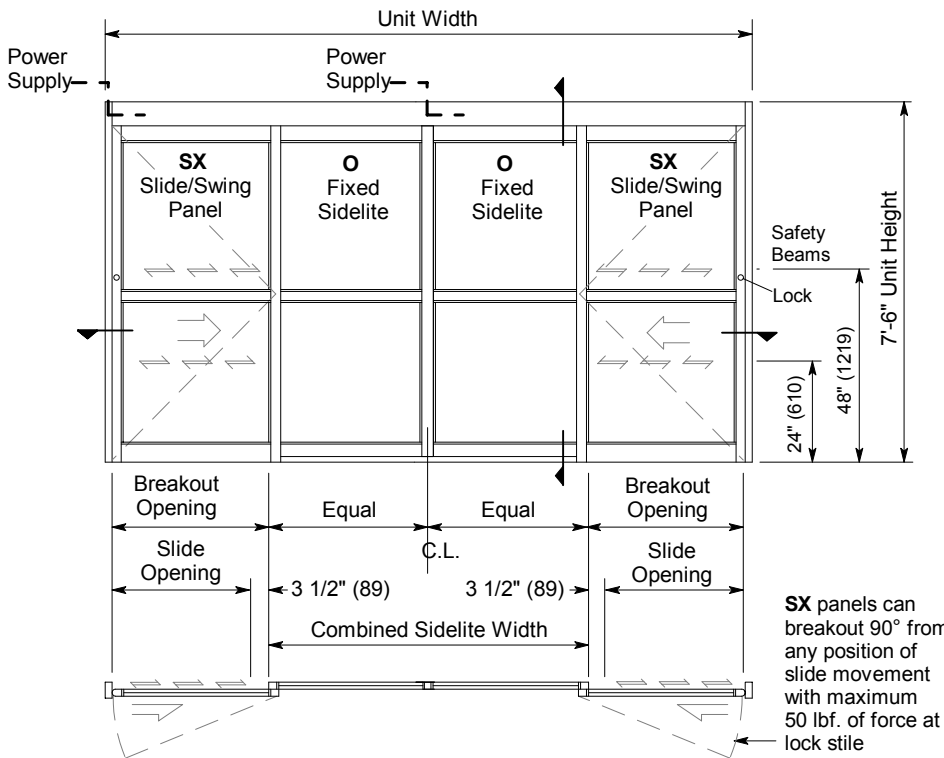
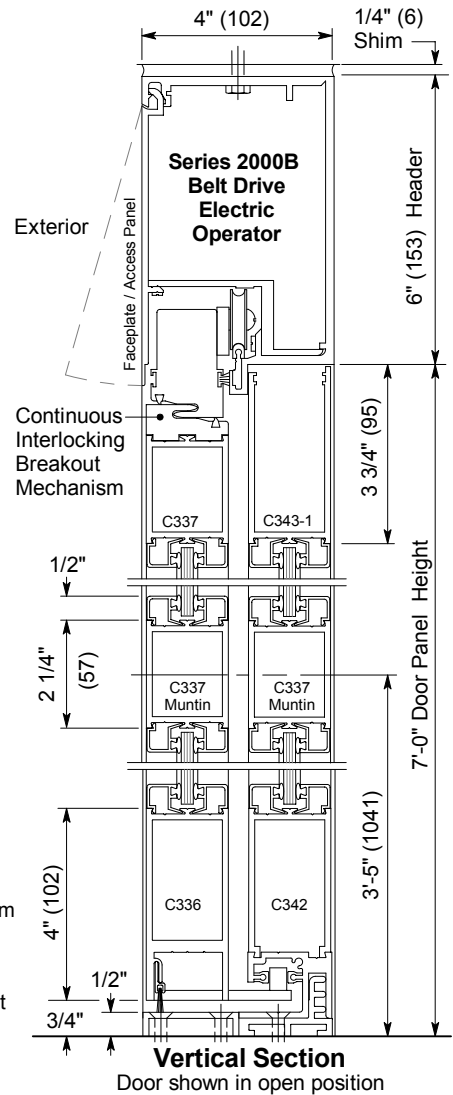
### Options

- Custom unit widths between 14'-0" & 16'-0".
- Custom unit height to 8'-6".
- Custom mid-rails, bottom rails and jambs.
- Transom
- Medium or wide stile construction (slide opening will be reduced).
- Custom anodized or paint finish or stainless steel cladding

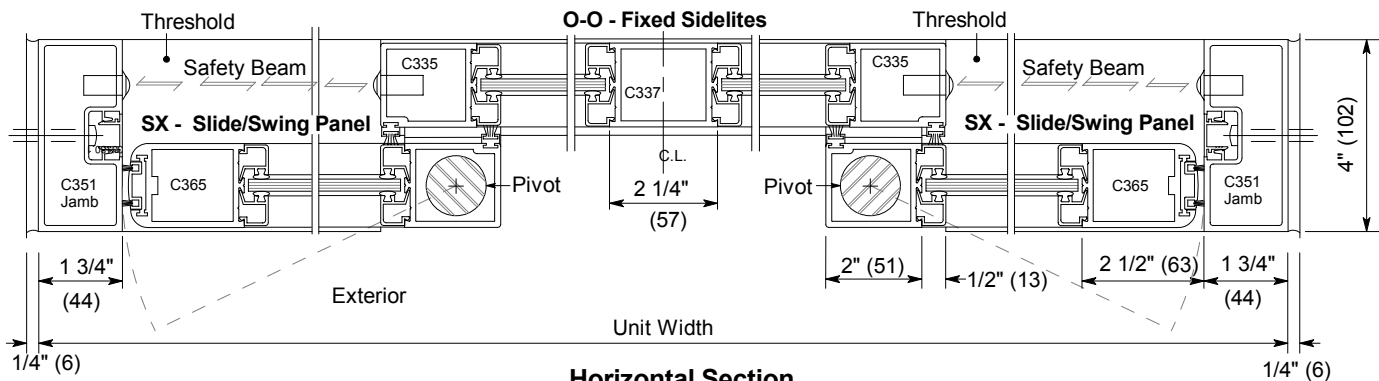
See details on options starting on p. A5.0 and Architectural Specifications on p. A6.7.

### Installation and Operation

- Door perimeter mounted within rough opening with 1/4" minimum shim space at header & jambs. Finish floor not to exceed 1/4" out of level. (See page A.3)
- Electrical: Provide 120 VAC, 60 cycle, single phase, 15 amp service (in conduit) to each unit on dedicated 20 amp circuit breaker routed to header. Maximum current draw is 3.15 amps.
- Door actuated with header mounted motion sensors at interior and exterior (over each slide opening) for detection of traffic in each direction. Door closes after time delay expires. (See page A.4). Unit can also be set up for 1-way traffic thru each slide opening.
- Manual Locking: Exterior keylock and interior thumbturn provided at vertical strike rail. (Optional fail-safe or fail-secure autolock)



**Exterior Elevation and Floor Plan**



**Horizontal Section**