

Standard Packages

| Unit Width | Slide Opening | Wall Opening Width | Slide Panel Width |
|---------------|---------------|--------------------|-------------------|
| 8'-0" (2438) | 3'-0" (914) | 3'-7" (1092) | 2'-0" (610) |
| 9'-0" (2743) | 3'-6" (1067) | 4'-1" (1245) | 2'-3" (686) |
| 10'-0" (3048) | 4'-0" (1219) | 4'-7" (1397) | 2'-6" (762) |
| 12'-0" (3658) | 5'-0" (1524) | 5'-7" (1702) | 3'-0" (914) |
| 14'-0" (4267) | 6'-0" (1829) | 6'-7" (1829) | 3'-6" (1067) |
| 16'-0" (4877) | 7'-0" (2134) | 7'-7" (2311) | 4'-0" (1219) |

Unit Height: 7'-6" (2286) **Anodized Finish:** Clear or Dark Bronze
Glazing: Standard unit prep'd for 1/4" (6) glass. Glass by others.
Threshold: 1/2" (13) tall x 4" (102) wide (See page A5.3).

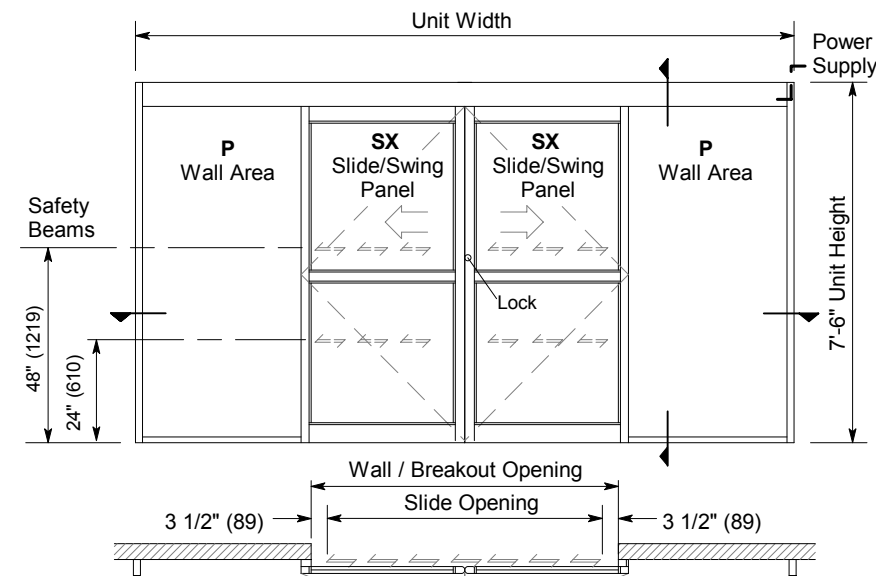
Installation and Operation

- Door unit is surface mounted onto exterior of finished wall. Finish floor not to exceed 1/4" out of level. (See page A.3)
- Electrical: Provide 120 VAC, 60 cycle, single phase, 15 amp service (in conduit) to each unit on dedicated 20 amp circuit breaker routed to header. Maximum current draw is 3.15 amps.
- Door actuated with motion sensor mounted over door opening at interior and exterior for detection of traffic in each direction. Door closes after time delay expires. (See page A.4)
- Manual Locking: Exterior keylock and interior thumbturn provided at RH vertical strike rail. (Optional fail-safe or fail-secure autolock)

Options

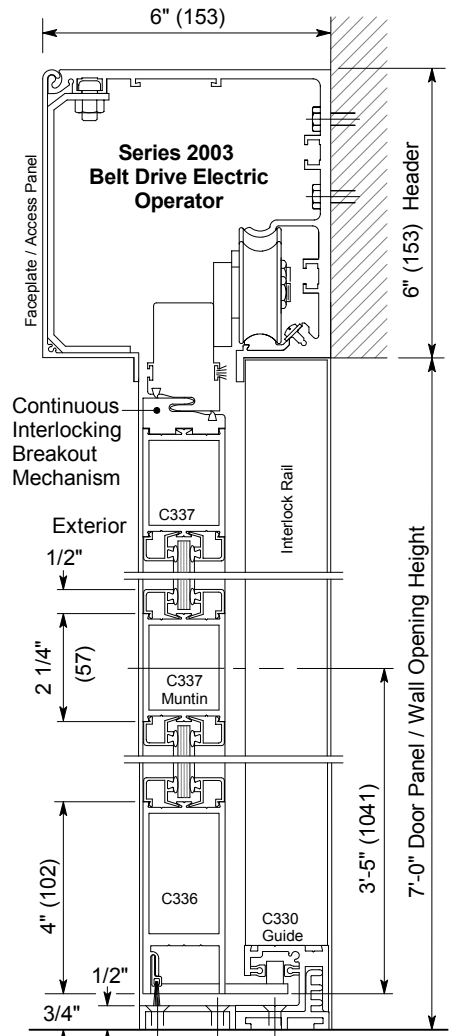
- Custom unit widths between 8'-0" & 16'-0".
- Custom unit height to 8'-6".
- Custom mid-rails, bottom rails and jambs.
- Medium or wide stile construction (slide opening will be reduced).
- Custom anodized or paint finish or stainless steel cladding.

See details for options starting on p. A5.0 and Architectural Specifications on p. A7.0.

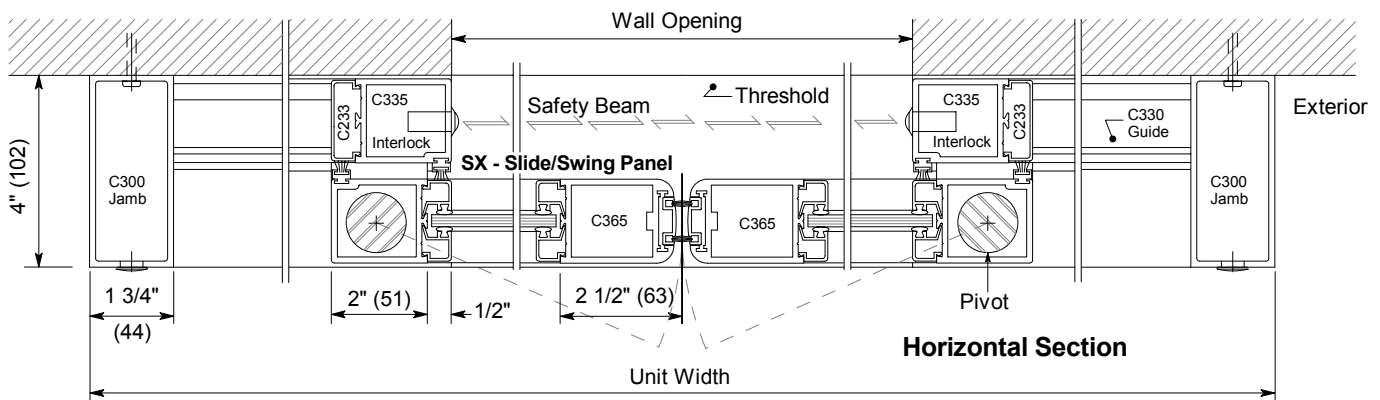


SX panels can breakout 90° from any position of slide movement with max. 50 lbf. of force at lock stile.

Exterior Elevation and Floor Plan



Vertical Section
Door shown in open position



Horizontal Section