

### Standard Packages

Unit Width	Slide Opening	Breakout Opening	Slide Panel Width	Sidelite Width	Rough Opening Width
8'-0" (2438)	3'-0" (914)	6'-9 1/2" (2070)	2'-0" (610)	2'-0 1/2" (622)	8'-0 1/2" (2146)
9'-0" (2743)	3'-6" (1067)	7'-9 1/2" (2375)	2'-3" (686)	2'-3 1/2" (699)	9'-0 1/2" (2756)
10'-0" (3048)	4'-0" (1219)	8'-9 1/2" (2680)	2'-6" (762)	2'-6 3/4" (781)	10'-0 1/2" (3061)
12'-0" (3658)	5'-0" (1524)	10'-9 1/2" (3289)	3'-0" (914)	3'-0 3/4" (933)	12'-0 1/2" (3670)
14'-0" (4267)	6'-0" (1829)	12'-9 1/2" (3899)	3'-6" (1067)	3'-6 3/4" (1086)	14'-0 1/2" (4280)
16'-0" (4877)	7'-0" (2134)	14'-9 1/2" (4509)	4'-0" (1219)	4'-0 3/4" (1238)	16'-0 1/2" (4890)

<b>Unit Height:</b> 7'-6" (2286)	<b>Rough Opening Height:</b> 7'-6 1/4" (2292)	<b>Anodized Finish:</b> Clear or Dark Bronze
<b>Glazing:</b> Standard unit prep'd for 1/4" (6) glass. Glass by others.		
<b>Threshold:</b> 1/2" (13) tall x 4" (102) wide (See page A5.3).		

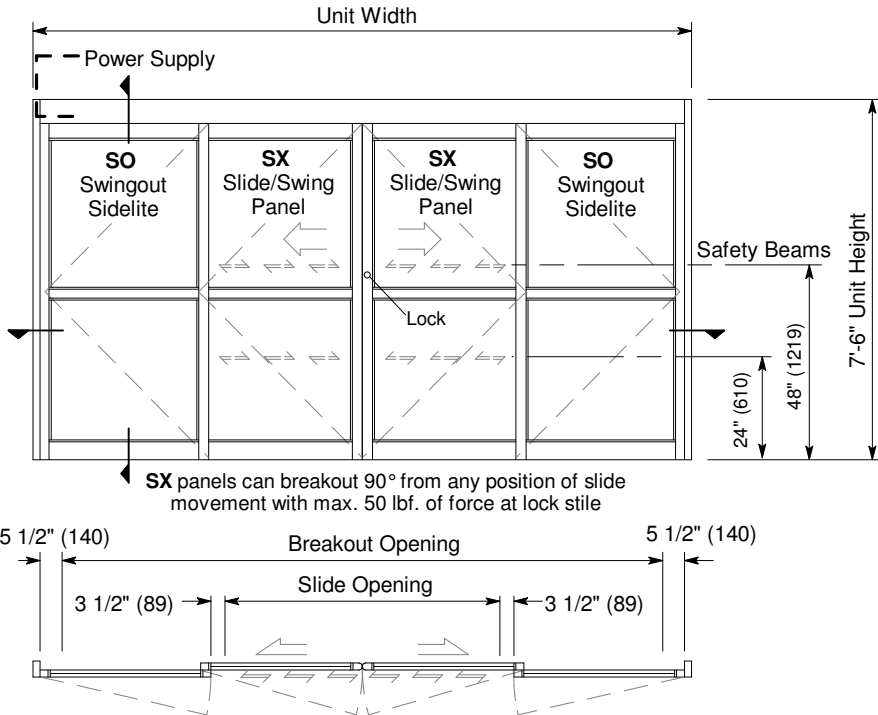
### Options

- Custom unit widths between 8'-0" & 16'-0".
- Custom unit height to 8'-6".
- Custom mid-rails, bottom rails and jambs.
- Transom, additional or extra wide sidelite.
- Medium stile rails (slide opening will be reduced by 3").
- Wide stile rails (slide opening will be reduced by 5 1/2").
- Custom anodized or paint finish or stainless steel cladding

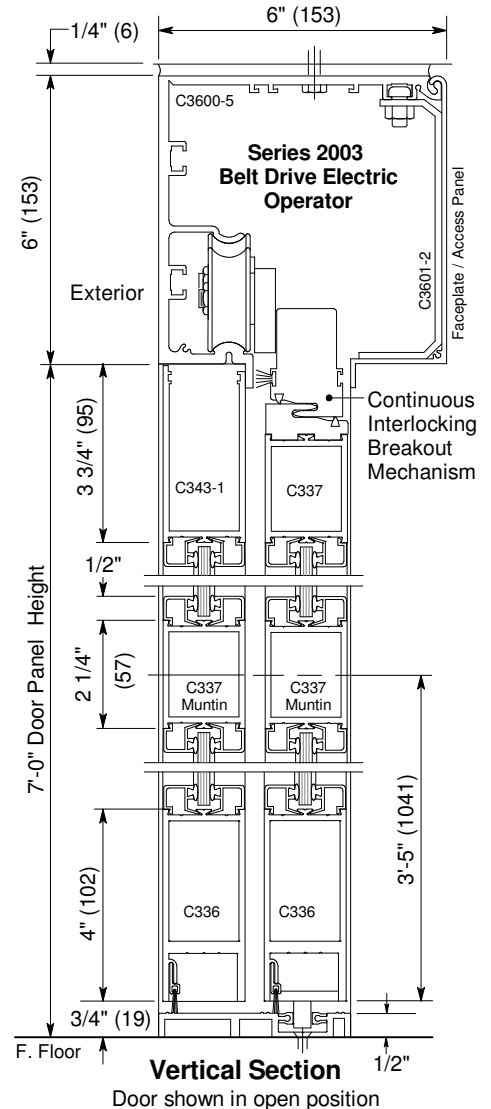
See details for options starting on p. A5.0 and Architectural Specifications on p. A7.0.

### Installation and Operation

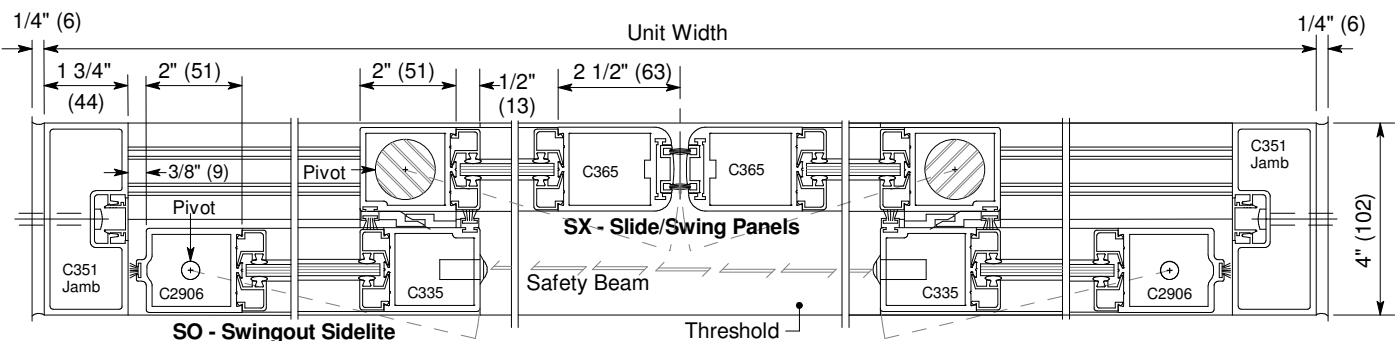
- Door perimeter mounted within rough opening with 1/4" minimum shim space at header & jambs. Finish floor not to exceed 1/4" out of level. (See page A.3)
- Electrical: Provide 120 VAC, 60 cycle, single phase, 15 amp service (in conduit) to each unit on dedicated 20 amp circuit breaker routed to header. Maximum current draw is 3.15 amps.
- Door actuated with header mounted motion sensor at interior and exterior for detection of traffic in each direction. Door closes after time delay expires. (See page A.4)
- Manual Locking: Exterior keylock and interior thumbturn provided at vertical strike rail. (Optional fail-safe or fail-secure autolock)



Exterior Elevations and Floor Plans



Vertical Section  
Door shown in open position



Horizontal Section