

Standard Packages

Unit Width	Slide Opening	Wall Opening Width	Fast Slide Panel Width	Slow Slide Panel Width
7'-0" (2134)	3'- 7 1/2" (1105)	4'- 2" (1270)	2'- 3 3/4" (705)	2'- 3 1/4" (692)
8'-0" (2438)	4'- 3 1/2" (1308)	4'-10" (1473)	2'- 7 3/4" (806)	2'- 7 1/4" (793)
9'-0" (2743)	4'-11 1/2" (1511)	5'- 6" (1676)	2'-11 3/4" (989)	2'-11 1/4" (976)
10'-0" (3048)	5'- 7 1/2" (1715)	6'- 2" (1880)	3'- 3 3/4" (1010)	3'- 3 1/4" (997)
12'-0" (3658)	6'-11 1/2" (2121)	7'- 6" (2286)	3'-11 3/4" (1213)	3'-11 1/4" (1200)

Unit Height: 7'-6" (2286)
Glazing: Standard unit prep'd for 1/4" (6) glass. Glass by others.

Anodized Finish: Clear or Dark Bronze

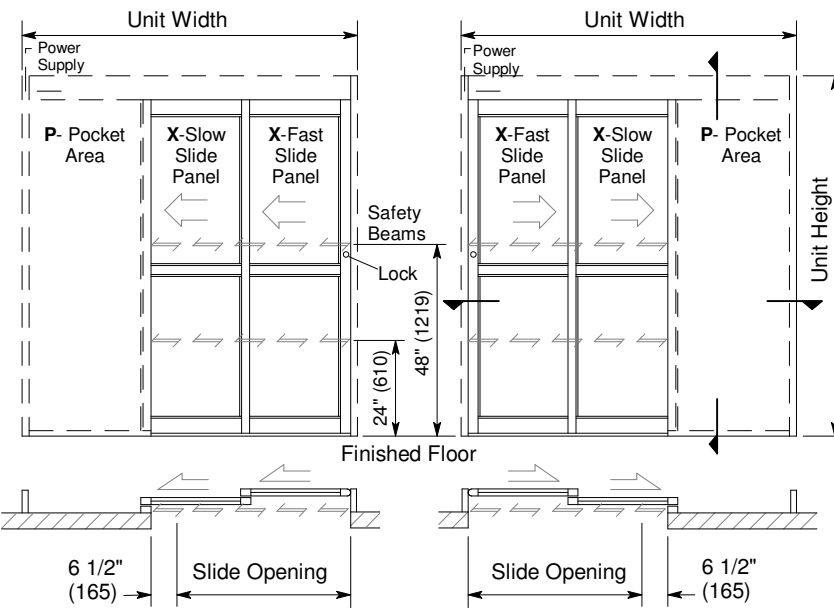
Options

- Custom unit widths between 7'-0" & 12'-0".
- Custom mid-rails, bottom rails and jambs.
- Threshold.
- Medium or wide stile construction (slide opening will be reduced).
- Custom anodized or paint finish or stainless steel cladding

See details for options starting on p. A5.0 and Architectural Specifications on p. A7.7.

Installation and Operation

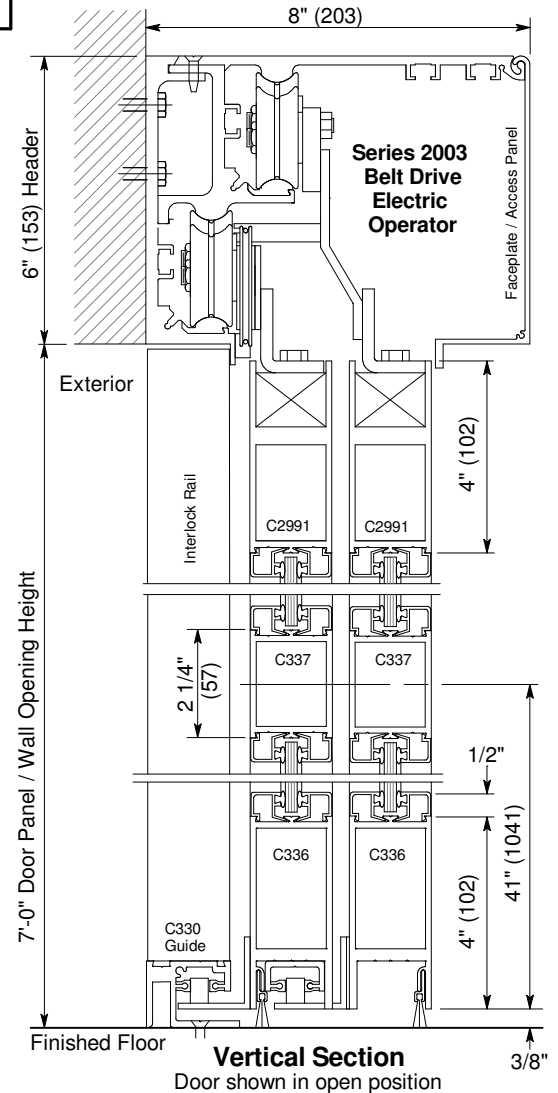
- Door unit is surface mounted onto interior of finished wall. Finish floor not to exceed 1/4" out of level. (See page A.3)
- Electrical: Provide 120 VAC, 60 cycle, single phase, 15 amp service (in conduit) to each unit on dedicated 20 amp circuit breaker routed to header. Maximum current draw is 3.15 amps.
- Door actuated with motion sensor mounted over door opening at interior and exterior for detection of traffic in each direction. Door closes after time delay expires. (p. A.4)
- Manual Locking: Exterior keylock and interior thumbturn provided at vertical strike rail. (Optional fail-safe or fail-secure autolock)



Type P-X-X

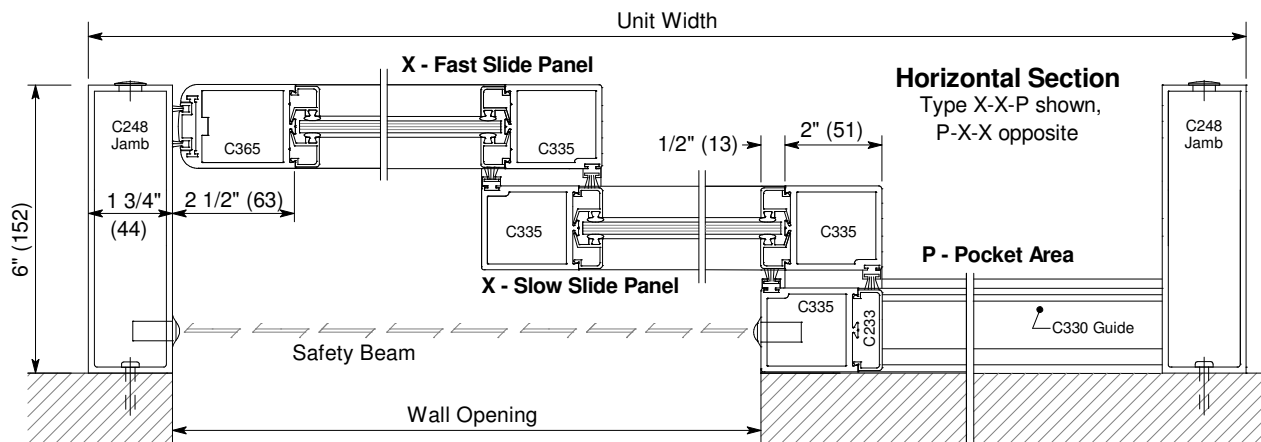
Exterior Elevations and Floor Plans

Type X-X-P



Vertical Section

Door shown in open position



Horizontal Section

Type X-X-P shown, P-X-X opposite

P - Pocket Area