



® 4242 Baldwin Boulevard
 Corpus Christi, Texas
 USA 78405-3399
 Tel: 800-531-3111, 361-888-5591
 Fax: 800-531-3108, 361-888-6510
 www.hortondoors.com
 The Automatic Choice

ARCHITECTURAL DETAILS

AUTOMATIC COMMERCIAL SLIDE DOORS

HD-Slide® Series 2001 Belt Drive

A4.2

Type: 010 Single Slide P-X or X-P Surface Applied

July 11

Standard Packages

Unit Width	Slide Opening	Wall Opening	Slide Panel Width
7'-0" (2134)	3'-0" (914)	3'-3 1/2" (1003)	3'-6" (1067)
8'-0" (2438)	3'-6" (1067)	3'-9 1/2" (1156)	4'-0" (1219)
8'-6" (2591)	3'-9" (1143)	4'-0 1/2" (1232)	4'-3" (1295)
9'-0" (2743)	4'-0" (1219)	4'-3 1/2" (1308)	4'-6" (1372)

Unit Height: 7'-8" (2337) **Anodized Finish:** Clear or Dark Bronze
Glazing: Standard unit prep'd for 1/4" (6) glass. Glass by others.
Threshold: 1/2" (13) tall x 4" wide (See page A5.3).

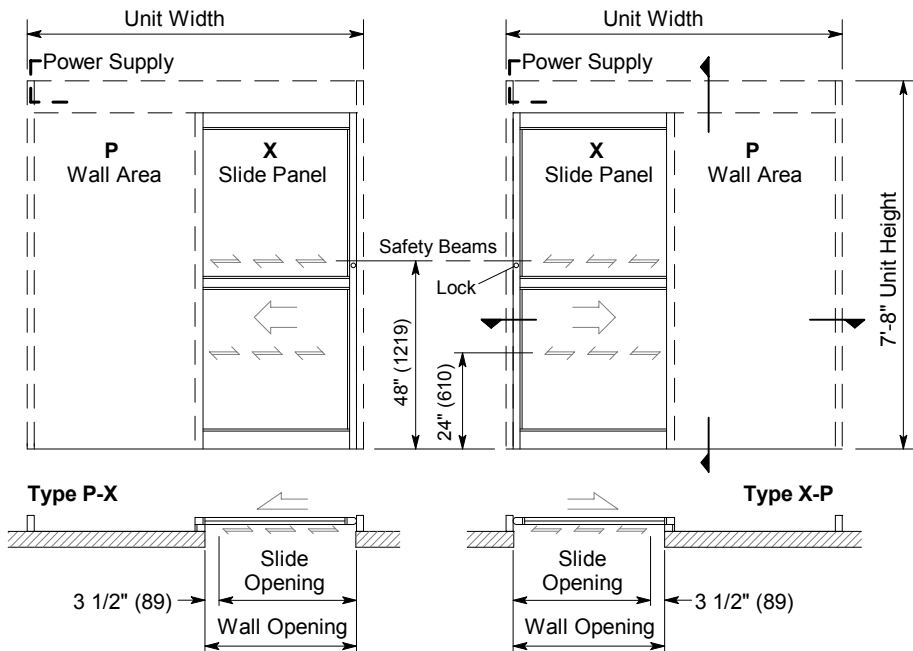
Installation and Operation

- Door unit is surface mounted onto interior of finished wall. Finish floor not to exceed 1/4" out of level. (See page A.3)
- Electrical: Provide 120 VAC, 60 cycle, single phase, 15 amp service (in conduit) to each unit on dedicated 20 amp circuit breaker routed to header. Maximum current draw is 3.15 amps.
- Door actuated with motion sensor mounted over door opening at interior and exterior for detection of traffic in each direction. Door closes after time delay expires. (See page A.4)
- Manual Locking: Exterior keylock and interior thumbturn provided at RH vertical strike rail. (Optional fail-safe or fail-secure autolock)

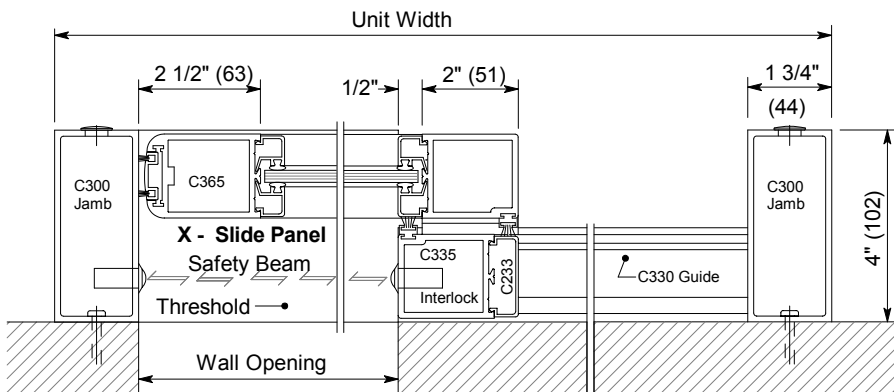
Options

- Custom unit widths between 7'-0" & 9'-0".
- Custom unit height to 8'-8".
- Custom mid-rails, bottom rails and jambs.
- Medium or wide stile construction (slide opening will be reduced).
- Custom anodized or paint finish or stainless steel cladding.

See Architectural Specifications on p. A8.0 and Specification Details starting on p. A5.0.

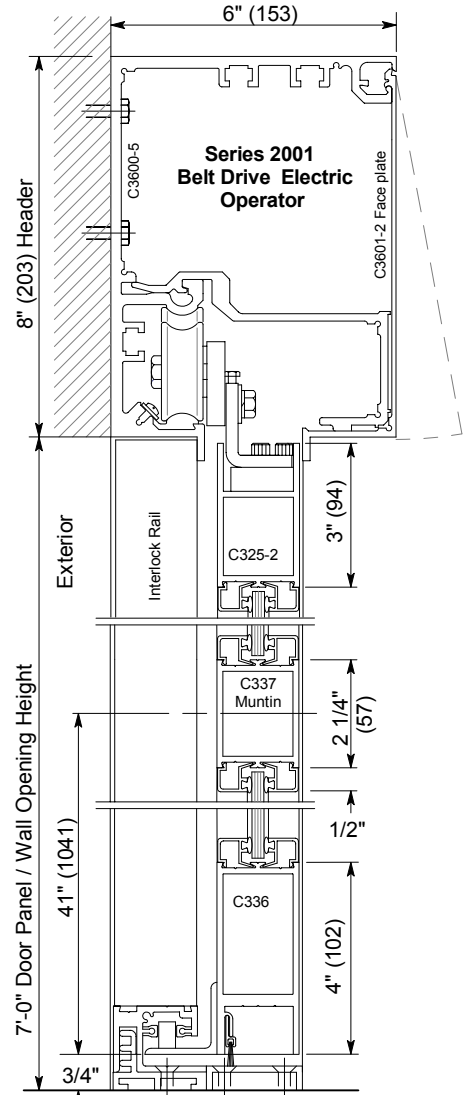


Exterior Elevation and Floor Plan



Horizontal Section

Exterior
 Type X-P shown, P-X opposite



Vertical Section

Door shown in open position

Horton Automatics reserves the right to improve the product and change its specifications without notice. Dimensions given in U.S. inches followed by millimeters in parenthesis.