



® 4242 Baldwin Boulevard  
 Corpus Christi, Texas  
 USA 78405-3399  
 Tel: 800-531-3111, 361-888-5591  
 Fax: 800-531-3108, 361-888-6510  
 www.hortondoors.com  
 The Automatic Choice

# ARCHITECTURAL DETAILS

## AUTOMATIC COMMERCIAL SLIDE DOORS

HD-Slide® Series 2500 Elegant®

A4.16a

Type: 010 Single Slide P-X or X-P

July 17

### Standard Packages

Unit Width	Slide / Wall Opening	Slide Panel Width
7'-0" (2134)	3'-1 3/4" (959)	3' - 4 1/4" (1022)
8'-0" (2438)	3'-7 3/4" (1111)	3'-10 1/4" (1775)
9'-0" (2743)	4'-1 3/4" (1264)	4' - 4 1/4" (1321)

**Unit Height:** 7'-8" (2337) **Threshold:** 1/2" tall x 4" wide (See p. A5.3).  
**Glazing:** Standard unit provided with 1/2" (6) clear tempered glass.  
**Anodized Finish:** Clear or Dark Bronze

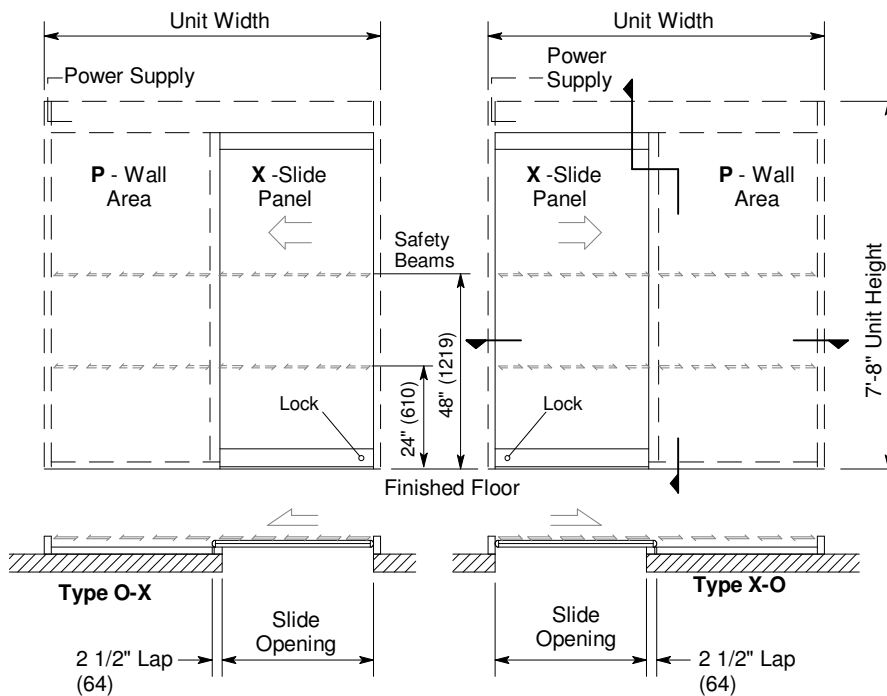
### Options

- Custom unit widths between 7'-0" & 9'-0".
- Custom bottom rails and jambs.
- Tinted Grey or Bronze glass.
- Transom or extra wide sidelite.
- Custom anodized or paint finish or stainless steel cladding

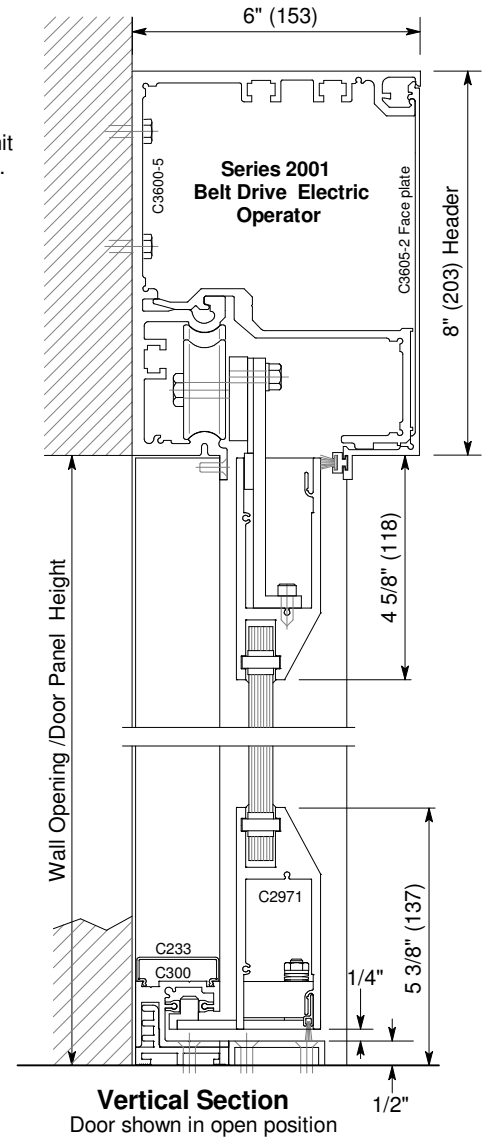
See Architectural Specifications on p. A8e.0 and Specification Details starting on p. A5.0.

### Installation and Operation

- Door surface mounted onto interior of finished wall. Finish floor not to exceed 1/4" out of level. (See page A.3)
- Electrical: Provide 120 VAC, 60 cycle, single phase, 15 amp service (in conduit) to each unit on dedicated 20 amp circuit breaker routed to header. Maximum current draw is 3.15 amps.
- Door actuated with header mounted motion sensor at interior and exterior for detection of traffic in each direction. Door closes after time delay expires. (See page A.4)
- Manual Locking: Exterior keylock into threshold provided at bottom rail. (Optional fail-safe or fail-secure autolock)

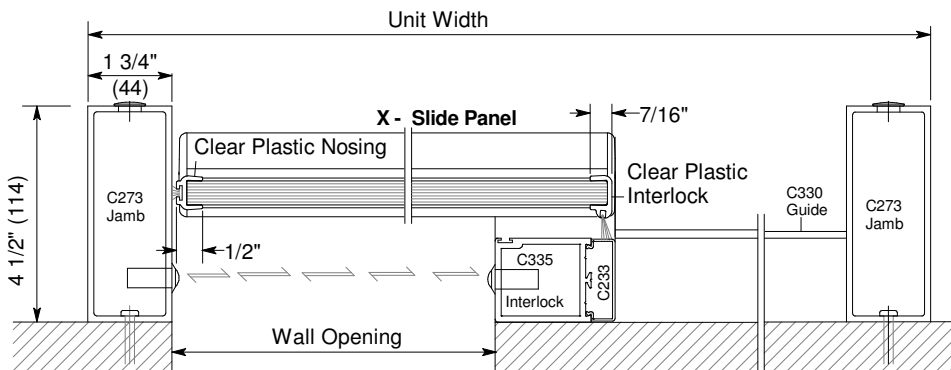


Exterior Elevations and Floor Plans



Vertical Section

Door shown in open position



Horizontal Section

Type X-P shown, P-X opposite

Horton Automatics reserves the right to improve the product and change its specifications without notice. Dimensions given in U.S. inches followed by millimeters in parenthesis.