

Standard Packages

Unit Width	Slide Opening	Slide Panel Width	Sidelite Width	Rough Opening Width
9'-0" (2743)	3'-10" (1168)	2' - 1 1/2" (648)	2'-5 1/4" (743)	9' -0 1/2" (2756)
10'-0" (3048)	4' - 4" (1321)	2' - 4 1/2" (724)	2'-8 1/4" (819)	10'-0 1/2" (3061)
12'-0" (3658)	5' - 4" (1627)	2'-10 1/2" (876)	3'-2 1/4" (972)	12'-0 1/2" (3670)
14'-0" (4280)	6' - 4" (1930)	3' - 4 1/2" (1029)	3'-8 1/4" (1124)	14'-0 1/2" (4280)

Unit Height: 7'-8" (2337)	Rough Opening Height: 7'-8 1/4" (2350)	Anodized Finish: Clear or Dark Bronze
Glazing: Standard unit provided with 1/2" (6) clear tempered glass.		
Threshold: 1/2" (13) tall x 4" wide (See page A5.3).		

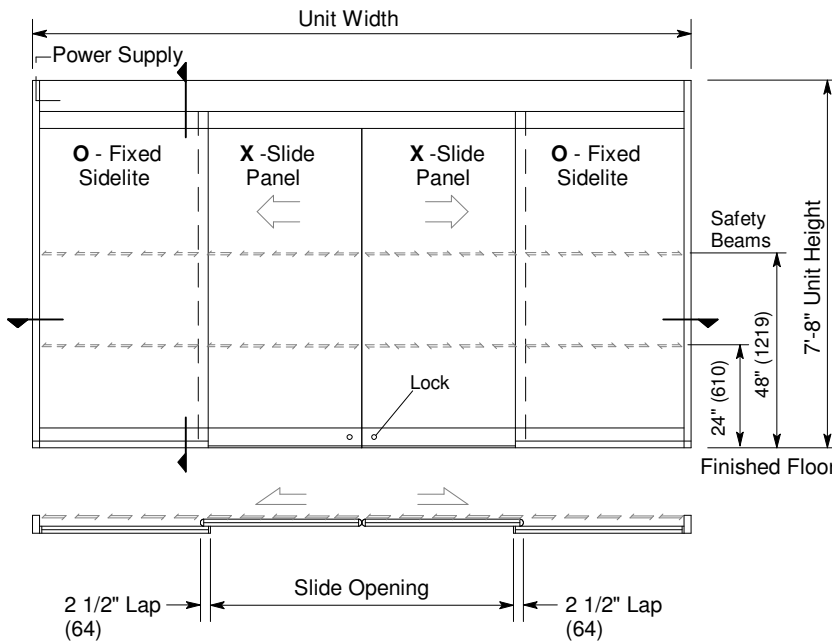
Options

- Custom unit widths between 9'-0" & 14'-0".
- Custom bottom rails and jambs.
- Tinted Grey or Bronze glass.
- Transom or extra wide sidelite.
- Custom anodized or paint finish or stainless steel cladding

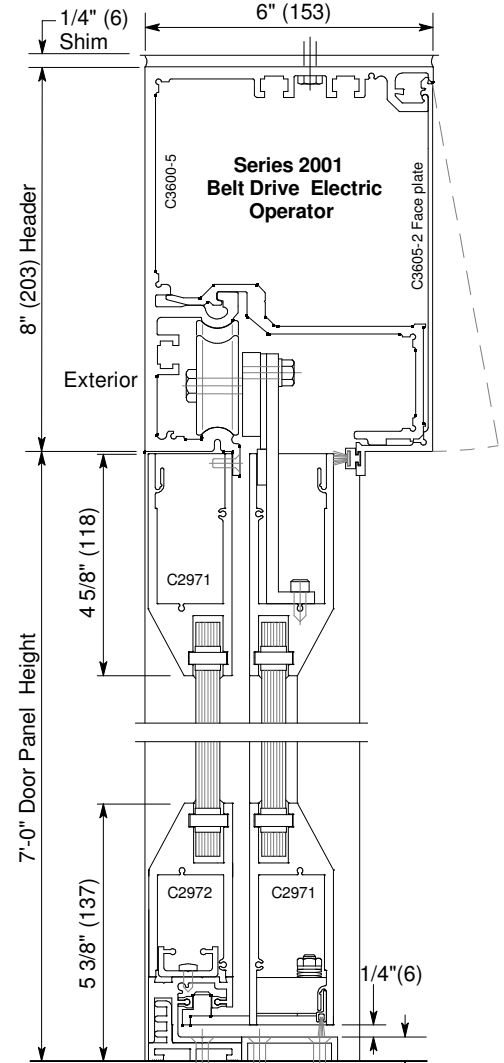
See Architectural Specifications on p. A8e.0 and Specification Details starting on p. A5.0.

Installation and Operation

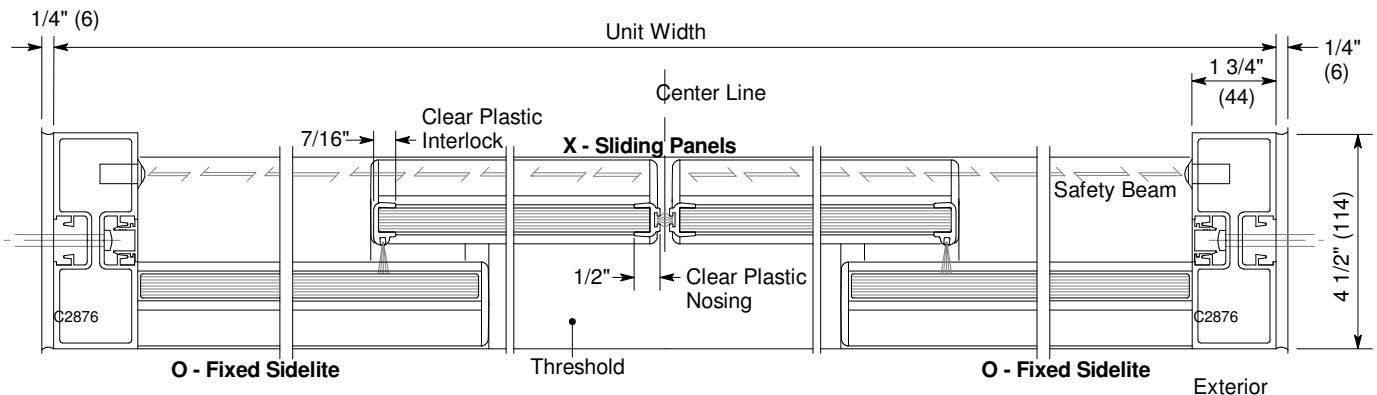
- Door perimeter mounted within rough opening with 1/4" minimum shim space at header & jambs. Finish floor not to exceed 1/4" out of level. (See page A.3)
- Electrical: Provide 120 VAC, 60 cycle, single phase, 15 amp service (in conduit) to each unit on dedicated 20 amp circuit breaker routed to header. Maximum current draw is 3.15 amps.
- Door actuated with header mounted motion sensor at interior and exterior for detection of traffic in each direction. Door closes after time delay expires. (See page A.4)
- Manual Locking: Exterior keylock into threshold provided at bottom rail. (Optional fail-safe or fail-secure autolock)



Exterior Elevation and Floor Plan



Vertical Section
Door shown in open position



Horizontal Section