



® 4242 Baldwin Boulevard
 Corpus Christi, Texas
 USA 78405-3399
 Tel: 800-531-3111, 361-888-5591
 Fax: 800-531-3108, 361-888-6510
 www.hortondoors.com
 The Automatic Choice

ARCHITECTURAL DETAILS

AUTOMATIC COMMERCIAL SLIDE DOORS

HD-Slide® Series 2500 Elegant®

A4.20

Type: 310 Single Slide SO-SX or SX-SO

June 15

Standard Packages

| Unit Width | Slide Opening | Breakout Opening | Slide Panel Width | Sidelite Width | Rough Opening Width |
|--------------|---------------|------------------|-------------------|----------------|---------------------|
| 7'-0" (2134) | 3'-0" (914) | 6'-3" (1905) | 3'-6" (1067) | 3'-5" (1041) | 7'-0 1/2" (2146) |
| 8'-0" (2438) | 3'-6" (1067) | 7'-3" (2210) | 4'-0" (1219) | 3'-11" (1194) | 8'-0 1/2" (2451) |
| 8'-6" (2591) | 3'-9" (1143) | 7'-9" (2362) | 4'-3" (1295) | 4'-2" (1270) | 8'-6 1/2" (2604) |
| 9'-0" (2743) | 4'-0" (1219) | 8'-3" (2515) | 4'-6" (1372) | 4'-5" (1346) | 9'-0 1/2" (2756) |

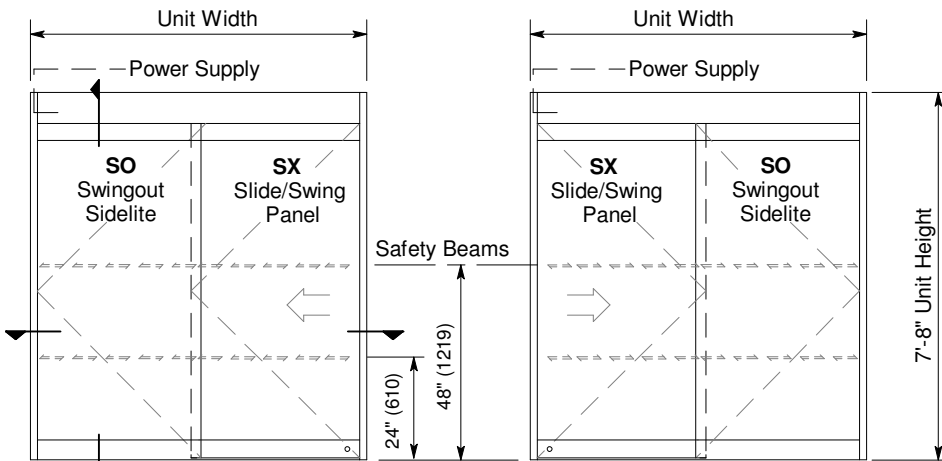
| | | |
|---|---|---|
| Unit Height: 7'-8" (2337) | Rough Opening Height: 7'-8 1/4" (2343) | Anodized Finish: Clear or Dark Bronze |
| Glazing: Standard unit provided with 1/2" (13) clear tempered glass. | | |
| Threshold: 1/2" (13) tall x 4" wide (See page A5.3). | | |

Options

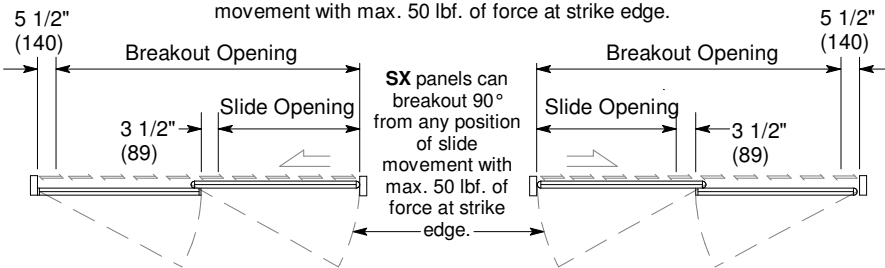
- Custom unit widths between 7'-0" & 9'-0".
- Tinted Grey or Bronze glass.
- Transom or extra wide sidelite.
- Custom anodized or paint finish or stainless steel cladding

Installation and Operation

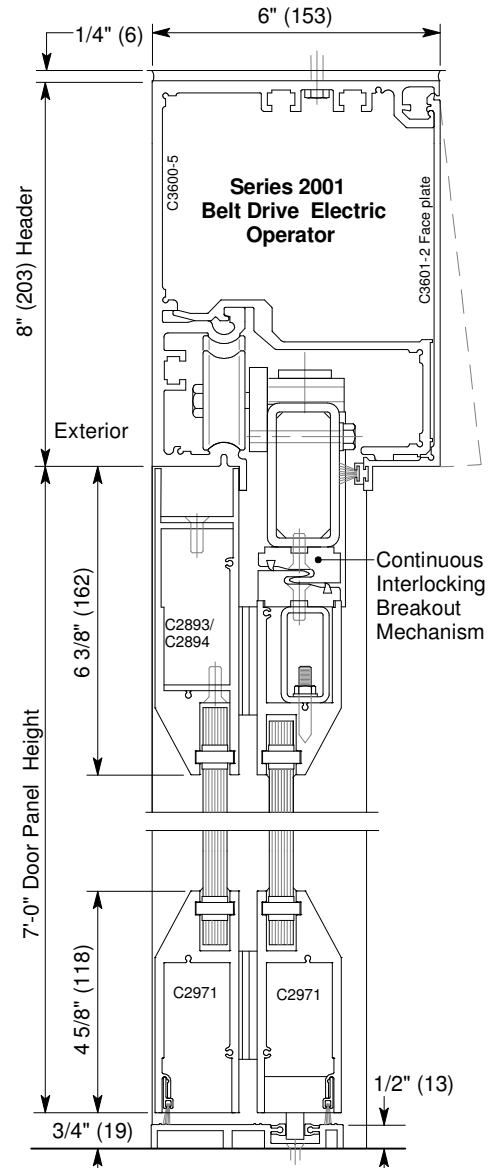
- Door perimeter mounted within rough opening with 1/4" minimum shim space at header & jambs. Finish floor not to exceed 1/4" out of level. (See page A.3)
- Electrical: Provide 120 VAC, 60 cycle, single phase, 15 amp service (in conduit) to each unit on dedicated 20 amp circuit breaker routed to header. Maximum current draw is 3.15 amps.
- Door actuated with header mounted motion sensor at interior and exterior for detection of traffic in each direction. Door closes after time delay expires. (See page A.4)
- Manual Locking: Exterior keylock into threshold provided at bottom rail. (Optional fail-safe or fail-secure autolock)



SX panels can breakout 90° from any position of slide movement with max. 50 lbf. of force at strike edge.



Exterior Elevations and Floor Plans



Vertical Section

Door shown in open position

