



® 4242 Baldwin Boulevard
 Corpus Christi, Texas
 USA 78405-3399
 Tel: 800-531-3111, 361-888-5591
 Fax: 800-531-3108, 361-888-6510
 www.hortondoors.com
 The Automatic Choice

ARCHITECTURAL DETAILS

AUTOMATIC COMMERCIAL SLIDE DOORS

HD-Slide® Series 2500 Elegant®

Type: 110 Surface Applied Single Slide P-SX or SX-P

A4.23

July 17

Standard Packages

Unit Width	Slide / Wall Opening	Slide Panel Width
7'-0" (2134)	3'-1 3/4" (914)	3' - 4 1/4" (1067)
8'-0" (2438)	3'-7 3/4" (914)	3'-10 1/4" (1175)
9'-0" (2743)	4'-1 3/4" (914)	4' - 4 1/4" (1327)

Unit Height: 7'-8" (2337) Glazing: Standard unit provided with 1/2" (6) clear tempered glass. Threshold: 1/2" (13) tall x 4" wide (See page A5.3).	Anodized Finish: Clear or Dark Bronze
---	--

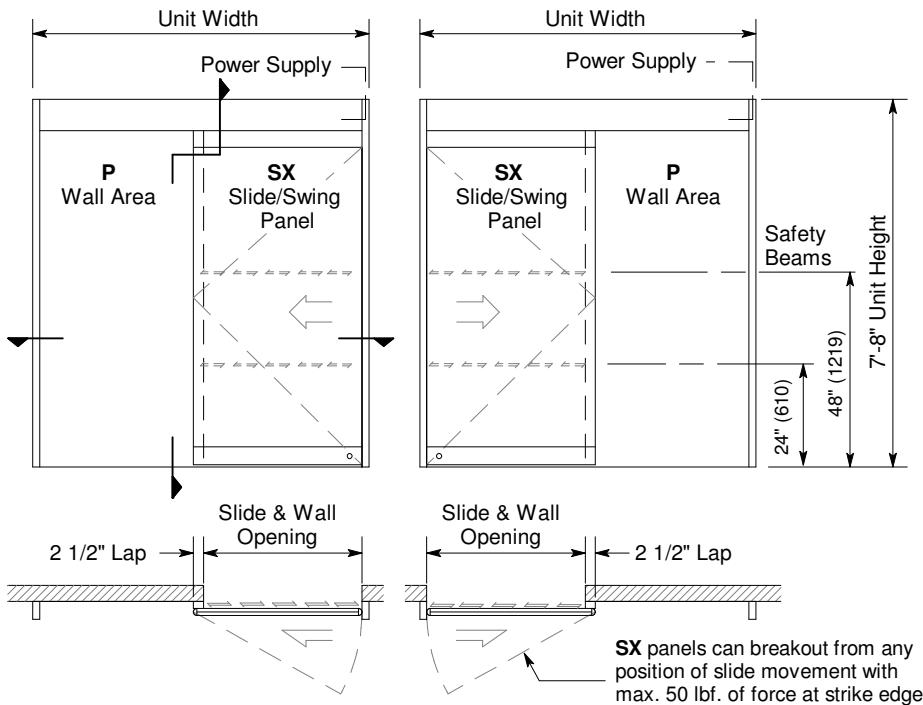
Options

- Custom unit widths between 7'-0" & 9'-0".
- Custom bottom rails and jambs.
- Tinted Grey or Bronze glass.
- Transom or extra wide sidelite.
- Custom anodized, paint finish or stainless steel cladding

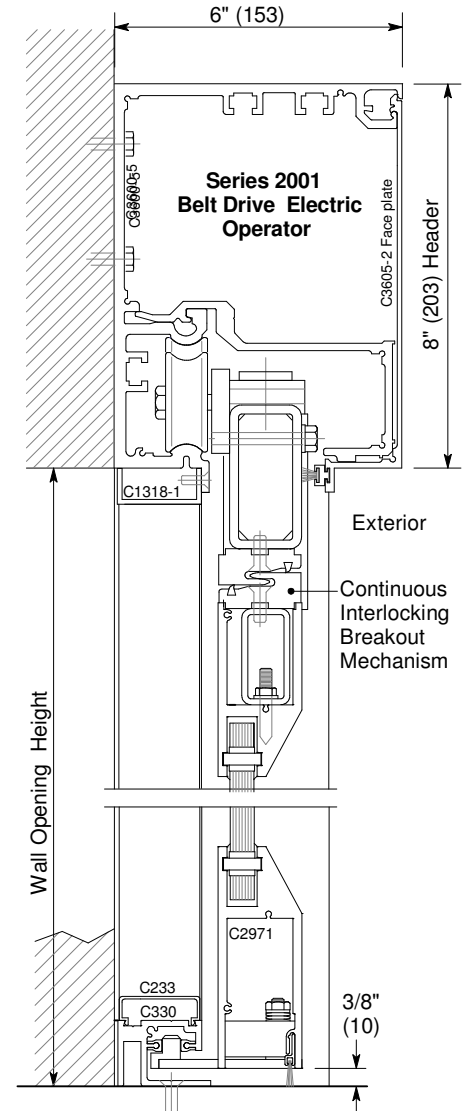
See Architectural Specifications on p. A8e.0 and Specification Details starting on p. A5.0.

Installation and Operation

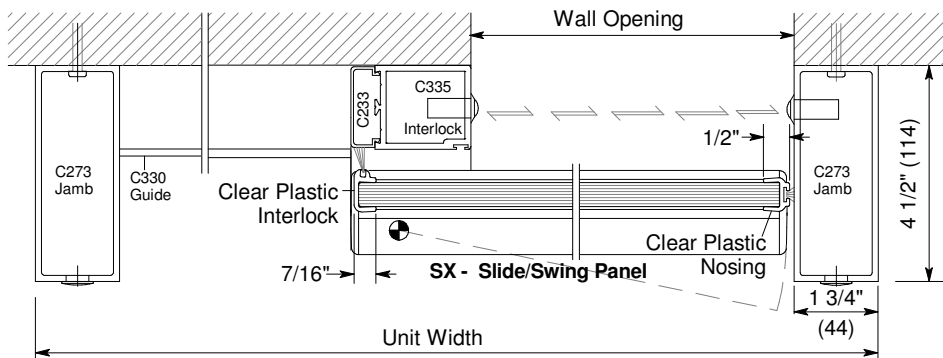
- Door unit is surface mounted onto exterior of finished wall. Finish floor not to exceed 1/4" out of level. (See page A.3)
- Electrical: Provide 120 VAC, 60 cycle, single phase, 15 amp service (in conduit) to each unit on dedicated 20 amp circuit breaker routed to header. Maximum current draw is 3.15 amps.
- Door actuated with motion sensor mounted over door opening at interior and exterior for detection of traffic in each direction. Door closes after time delay expires. (See page A.4)
- Manual Locking: Exterior keylock into threshold provided at bottom rail. (Optional fail-safe or fail-secure autolock)



Exterior Elevations and Floor Plans



Vertical Section
 Door shown in open position



Horizontal Section
 Type P-SX shown, SX-P opposite