



® 4242 Baldwin Boulevard
 Corpus Christi, Texas
 USA 78405-3399
 Tel: 800-531-3111, 361-888-5591
 Fax: 800-531-3108, 361-888-6510
 www.hortondoors.com
 The Automatic Choice

ARCHITECTURAL DETAILS

MANUAL SLIDE DOORS - ICU / CCU

Profiler-ICU® Telescoping

A10.1.4

Type: 010 Single P-X-X or X-X-P Surface Applied

Nov 16

Standard Packages

Unit Width	Slide Opening	Wall Opening Width	1st Slide Panel Width	2nd Slide Panel Width
7'-0" (2134)	4' - 2" (1270)	4' - 2 1/2" (1283)	2'-4" (711)	2'- 3 1/2" (699)
8'-0" (2438)	4'-10" (1473)	4'-10 1/2" (1486)	2'-8" (813)	2'- 7 1/2" (800)
9'-0" (2743)	5' - 6" (1676)	5' - 6 1/2" (1689)	3'-0" (914)	2'-11 1/2" (902)
10'-0" (3150)	6' - 2" (1879)	6' - 2 1/2" (1892)	3'-4" (1016)	3'- 3 1/2" (1003)
11'-0" (3353)	6'-10" (2083)	6'-10 1/2" (2096)	3'-8" (1118)	3'- 7 1/2" (1105)
12'-0" (3658)	7' - 6" (2286)	7' - 6 1/2" (2299)	4'-0" (1219)	3'-11 1/2" (1207)

Unit Height: 7'-2 1/2" (2197)
Glazing: Standard unit prep'd for 1/4" (6) glazing.
Anodized Finish: Clear or Dark Bronze

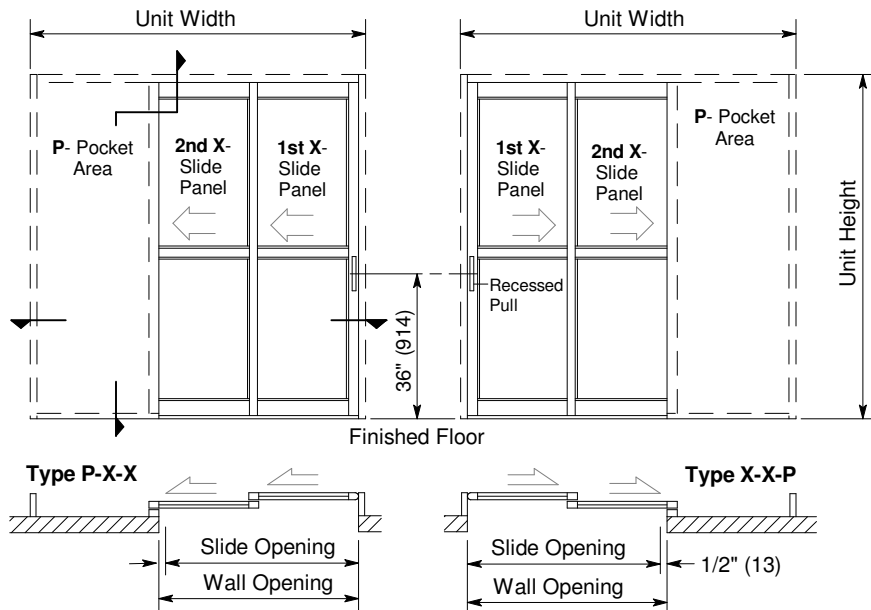
Options

- Positive Latching (p. A11.1)
- Custom unit widths between 7'-0" & 12'-0".
- Custom unit height to 8'-2 1/2".
- Custom mid-rails & bottom rails (p.A5.4) and jambs (p. A5.2).
- Medium stile construction (slide opening reduced by 1").
- Wide stile construction (slide opening reduced by 2 1/4").
- Custom anodized, paint or stainless steel cladding.
- Custom glazing from 5/8" to 1" (p.A5.5).

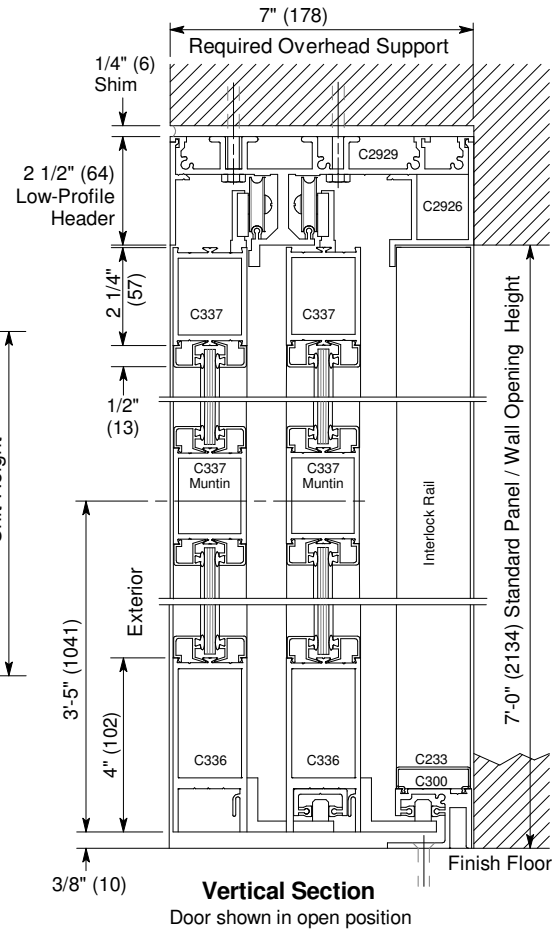
For Architectural Specifications see pages A12.0 thru A12.3.

Installation and Operation

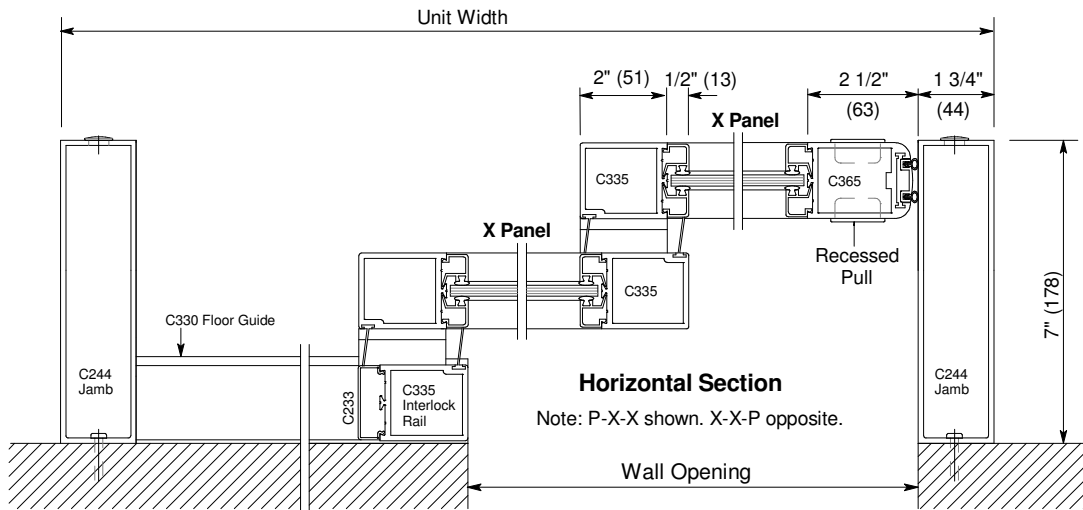
- Door unit is surface mounted onto interior of finished wall. Finish floor not to exceed 1/4" out of level.
- Sliding panel rolls on nylon covered track at header for quiet, smooth, anti-friction operation.
- Standard sliding panel (X) glazed with 1/4" tempered glass (shown) can be opened with 8 to 12 lbs of force.



Exterior Elevations and Floor Plans



Vertical Section
 Door shown in open position



Horizontal Section
 Note: P-X-X shown. X-X-P opposite.