



® 4242 Baldwin Boulevard  
 Corpus Christi, Texas  
 USA 78405-3399  
 Tel: 800-531-3111, 361-888-5591  
 Fax: 800-531-3108, 361-888-6510  
 www.hortondoors.com  
 The Automatic Choice

# ARCHITECTURAL DETAILS

## MANUAL SLIDE DOORS - ICU / CCU

### Profiler-ICU® Telescoping

A10.1.5

Type: 010 Biparting P-X-X-X-P Surface Applied

Nov 16

### Standard Packages

Unit Width	Slide Opening	Wall Opening	1st Slide Panel Width	2nd Slide Panel Width
8'-0" (2436)	4' - 6" (1372)	4' - 7" (1397)	1'- 4 1/2" (419)	1'- 4" (406)
9'-0" (2743)	5' - 2" (1575)	5' - 3" (1600)	1'- 6 1/2" (470)	1'- 6" (457)
10'-0" (3150)	5'-10" (1778)	5'-11" (1803)	1'- 8 1/2" (521)	1'- 8" (508)
11'-0" (3353)	6' - 6" (1981)	6' - 7" (2006)	1'-10 1/2" (571)	1'-10" (559)
12'-0" (2743)	7' - 2" (2184)	7' - 3" (2210)	2'- 0 1/2" (622)	2'- 0" (610)
14'-0" (4267)	8' - 6" (2591)	8' - 7" (2616)	2'- 4 1/2" (724)	2'- 4" (711)

**Unit Height:** 7'-2 1/2" (2197)  
**Glazing:** Standard unit prep'd for 1/4" (6) glazing.  
**Anodized Finish:** Clear or Dark Bronze

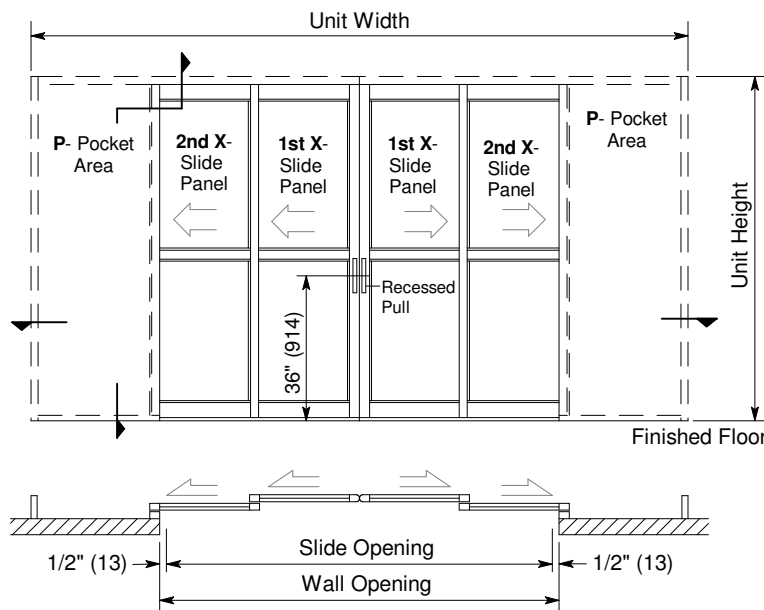
### Options

- Positive Latching (p. A11.1)
- Custom unit widths between 8'-0" & 14'-0".
- Custom unit height to 8'-2 1/2".
- Custom mid-rails & bottom rails (p.A5.4) and jambs (p. A5.2).
- Medium stile construction (slide opening reduced by 1 1/2").
- Wide stile construction (slide opening reduced by 2 3/4").
- Custom anodized, paint or stainless steel cladding.
- Custom glazing from 5/8" to 1" (p.A5.5).

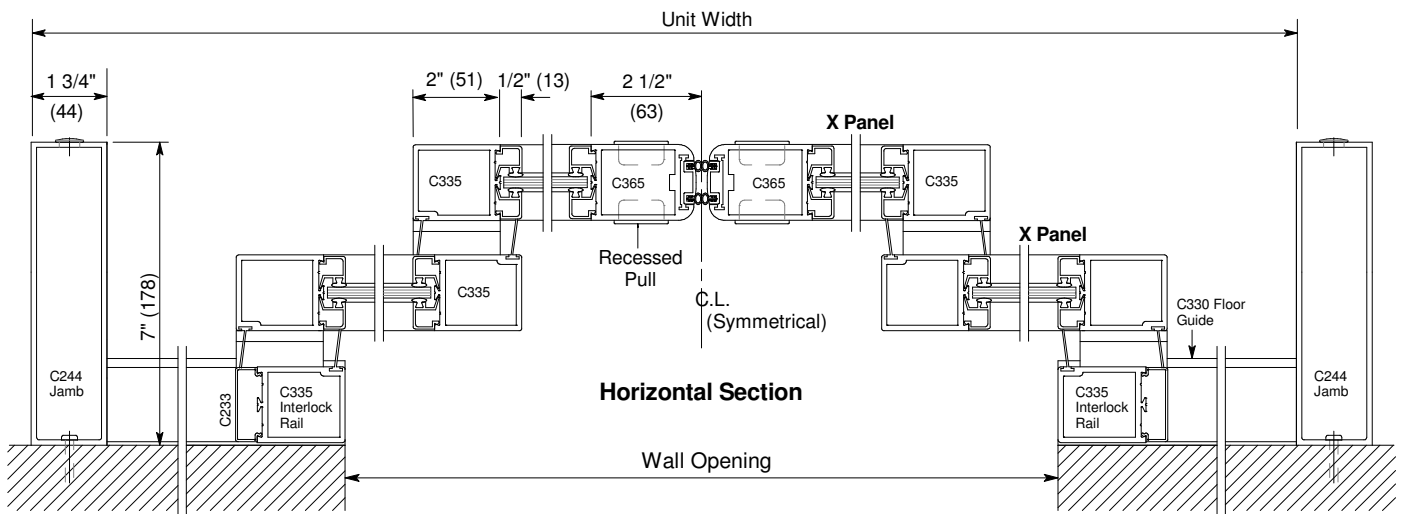
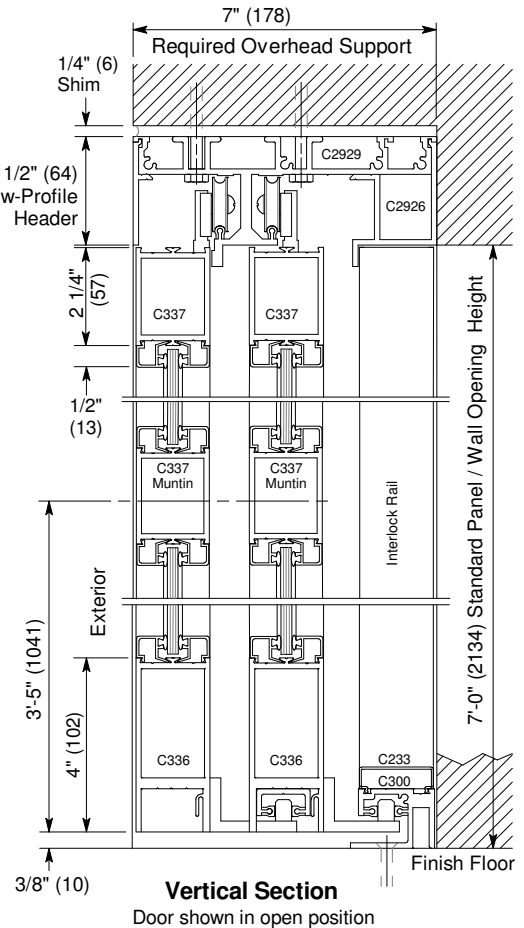
For Architectural Specifications see pages A12.0 thru A12.3.

### Installation and Operation

- Door unit is surface mounted onto interior of finished wall. Finish floor not to exceed 1/4" out of level.
- Sliding panel rolls on nylon covered track at header for quiet, smooth, anti-friction operation.
- Standard sliding panel (X) glazed with 1/4" tempered glass (shown) can be opened with 8 to 12 lbs of force.



Exterior Elevations and Floor Plans



Horizontal Section