



® 4242 Baldwin Boulevard
 Corpus Christi, Texas
 USA 78405-3399
 Tel: 800-531-3111, 361-888-5591
 Fax: 800-531-3108, 361-888-6510
 www.hortondoors.com
 The Automatic Choice

ARCHITECTURAL DETAILS

MANUAL SLIDE DOORS - ICU / CCU

Profiler-ICU® Telescoping

A10.4.4

Type: 110 Single P-X-SX or SX-X-P Surface Applied

Nov 16

Standard Packages

Unit Width	Slide Opening	Wall Opening	Breakout Opening	Slide/Swing Panel Width	Slide Panel Width
7'-0" (2134)	4' - 2" (1270)	4' - 2 1/2" (1283)	2'-1 1/2" (648)	2'-4" (711)	2'- 3 1/2" (699)
8'-0" (2438)	4'-10" (1473)	4'-10 1/2" (1486)	2'-5 1/2" (749)	2'-8" (813)	2'- 7 1/2" (800)
9'-0" (2743)	5' - 6" (1676)	5' - 6 1/2" (1689)	2'-9 1/2" (927)	3'-0" (914)	2'-11 1/2" (902)
10'-0" (3150)	6' - 2" (1879)	6' - 2 1/2" (1892)	3'-1 1/2" (952)	3'-4" (1016)	3'- 3 1/2" (1003)
11'-0" (3353)	6'-10" (2083)	6'-10 1/2" (2095)	3'-5 1/2" (1054)	3'-8" (1118)	3'- 7 1/2" (1105)
12'-0" (3658)	7' - 6" (2286)	7' - 6 1/2" (2299)	3'-9 1/2" (1232)	4'-0" (1219)	3'-11 1/2" (1207)

Unit Height: 7'-2 1/2" (2197)
Glazing: Standard unit prep'd for 1/4" (6) glazing.

Anodized Finish:
 Clear or Dark Bronze

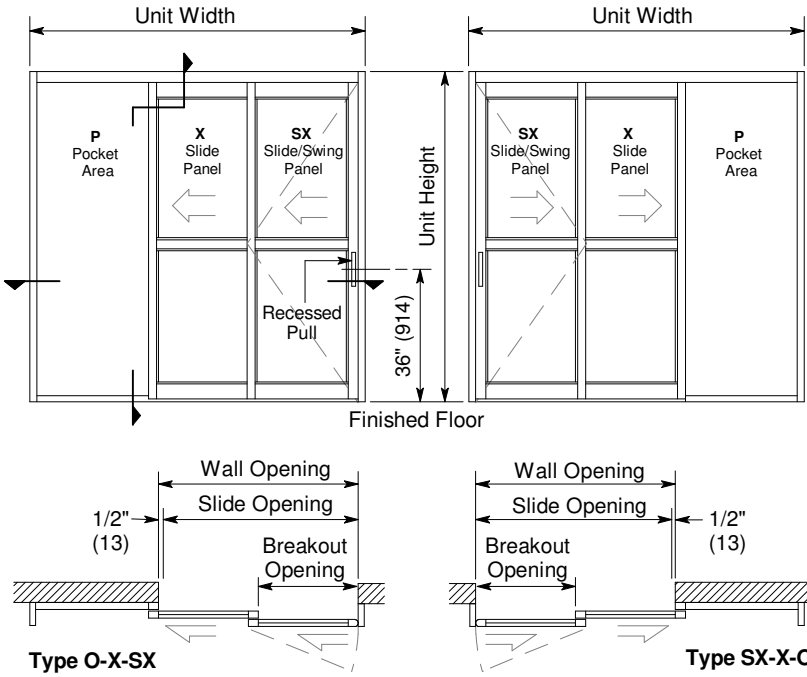
Options

- Positive Latching (p.A11.1)
- Custom unit widths between 7'-0" & 12'-0".
- Custom unit height to 8'-2 1/2".
- Custom mid-rails & bottom rails (p.A5.4) and jambs (p.A5.2)
- Medium stile construction (slide opening reduced by 1")
- Wide stile construction (slide opening reduced by 2 1/4")
- Custom anodized or paint finish or stainless steel cladding
- Custom glazing from 5/8" to 1" (p.A5.5)

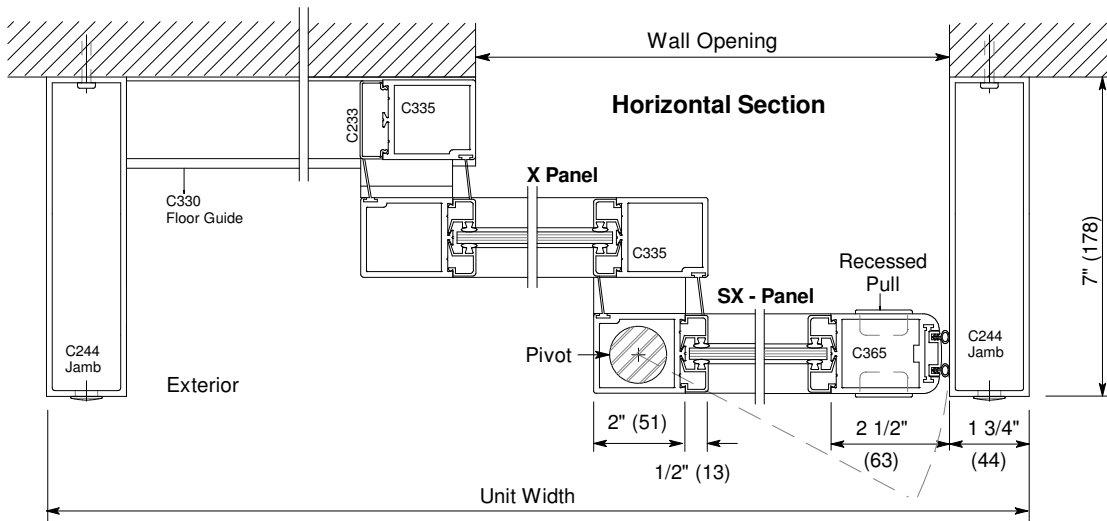
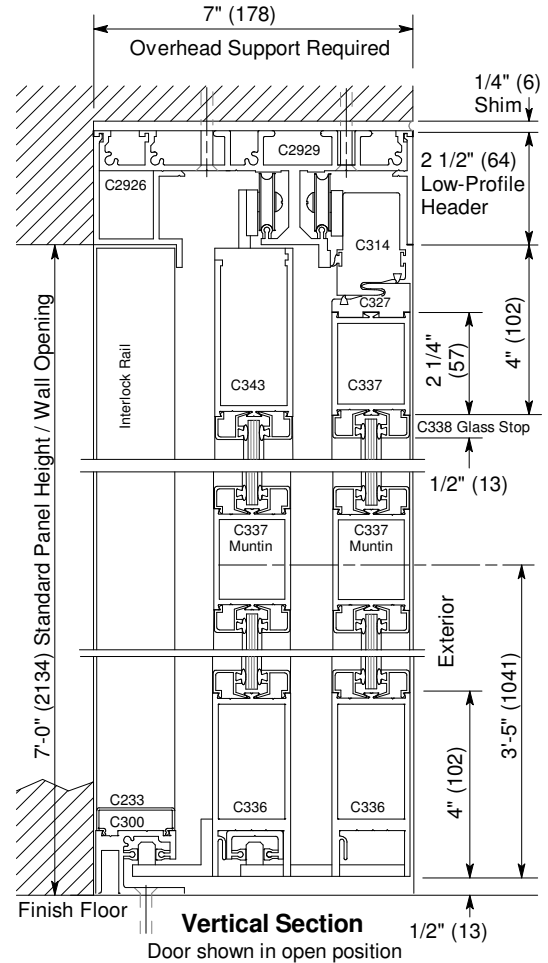
For Architectural Specifications see pages A12.0 thru A12.3.

Installation and Operation

- Door perimeter mounted within curtainwall or rough opening with 1/4" minimum shim space at header & jambs. Finish floor not to exceed 1/4" out of level (See p. A9.2).
- Sliding panel rolls on nylon covered track at header for quiet, smooth, anti-friction operation.
- Standard sliding panels glazed with 1/4" tempered glass (shown) can be opened with 8 to 12 lbs of force. Slide/Swing panel (SX) can swing out min. 90° at full open position requiring no more than 50 lbs of force applied at the strike stile.



Exterior Elevations and Floor Plans



Horizontal Section