

Standard Packages

Unit Width	Slide Opening	Breakout Opening	Slide Panel Width	Sidelite Width	Rough Opening Width
8'-0" (2438)	3'-0" (914)	6'-9 1/2" (2070)	2'-0" (610)	2'-0 1/2" (622)	8'-0 1/2" (2146)
9'-0" (2743)	3'-6" (1067)	7'-9 1/2" (2375)	2'-3" (686)	2'-3 1/2" (699)	9'-0 1/2" (2756)
10'-0" (3048)	4'-0" (1219)	8'-9 1/2" (2680)	2'-6" (762)	2'-6 3/4" (781)	10'-0 1/2" (3061)
12'-0" (3658)	5'-0" (1524)	10'-9 1/2" (3289)	3'-0" (914)	3'-0 3/4" (933)	12'-0 1/2" (3670)
14'-0" (4267)	6'-0" (1829)	12'-9 1/2" (3899)	3'-6" (1067)	3'-6 3/4" (1086)	14'-0 1/2" (4280)
16'-0" (4877)	7'-0" (2134)	14'-9 1/2" (4509)	4'-0" (1219)	4'-0 3/4" (1238)	16'-0 1/2" (4890)

Unit Height: 7'-2 1/2" (2197) Rough Opening Height: 7'-2 3/4" (2203) Glazing: Standard unit prep'd for 1/4" (6) glazing.	Anodized Finish: Clear or Dark Bronze
---	--

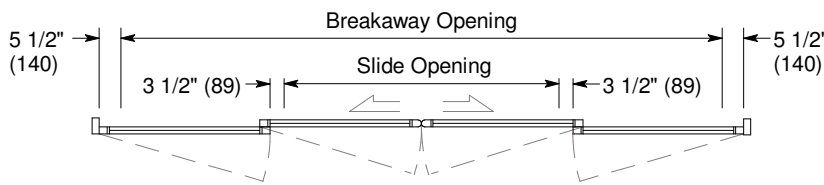
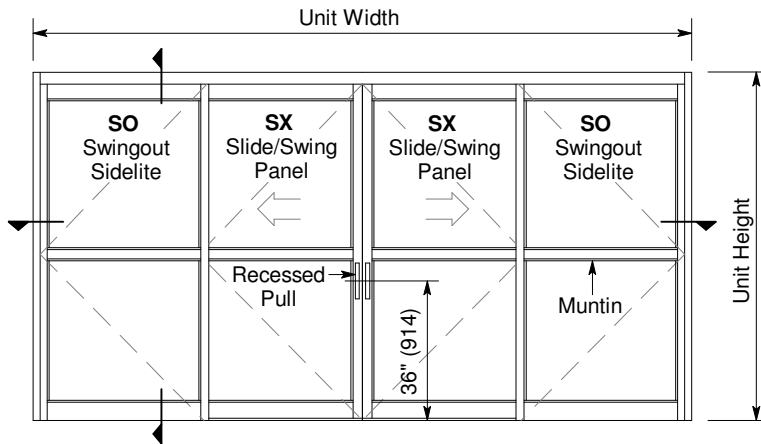
Options

- Positive Latching (p.A11.1)
- Full Size (4" x 6") Profiler® Header (p.A11.0)
- Custom unit widths between 8'-0" & 16'-0".
- Custom unit height to 8'-2 1/2".
- Custom mid-rails & bottom rails (p. A5.4) and jambs (p.A5.2).
- Medium stile construction (slide opening reduced by 3").
- Wide stile construction (slide opening reduced by 5 1/2").
- Custom anodized or paint finish or stainless steel cladding.
- Custom glazing from 5/8" to 1" (p.A5.5).

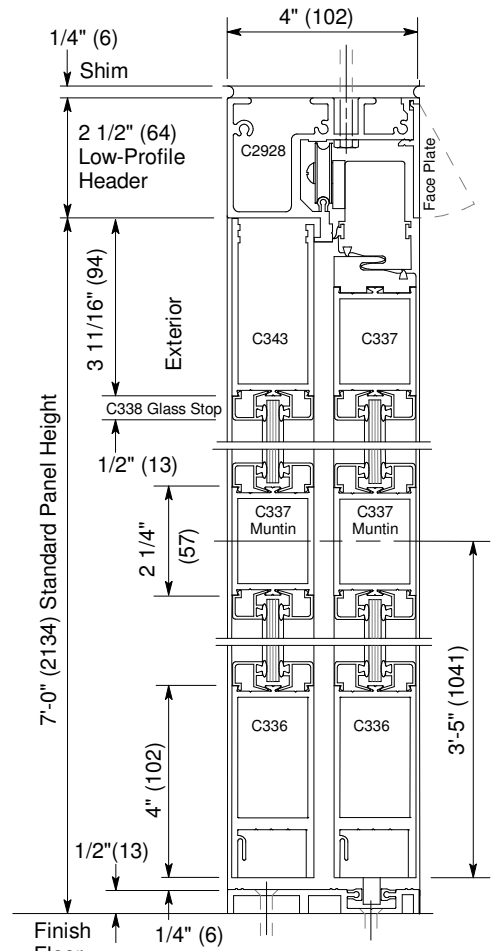
For Architectural Specifications see pages A12.0 thru A12.3.

Installation and Operation

- Door perimeter mounted within curtainwall or rough opening with 1/4" minimum shim space at header & jambs. Finish floor not to exceed 1/4" out of level. (See page A9.2)
- Sliding panel rolls on nylon covered track at header for quiet, smooth, anti-friction operation.
- Standard sliding panel (SX) glazed with 1/4" tempered glass (shown) can be opened with 8 to 12 lbs of force. SX panel can swing out min. 90° at any point of travel requiring no more than 50 lbs of force applied at the strike stile.
- Finger Safety: When sliding open, strike rail of sliding panel will stop 3 1/2" (89) short of adjacent sidelite. Result is slide opening.

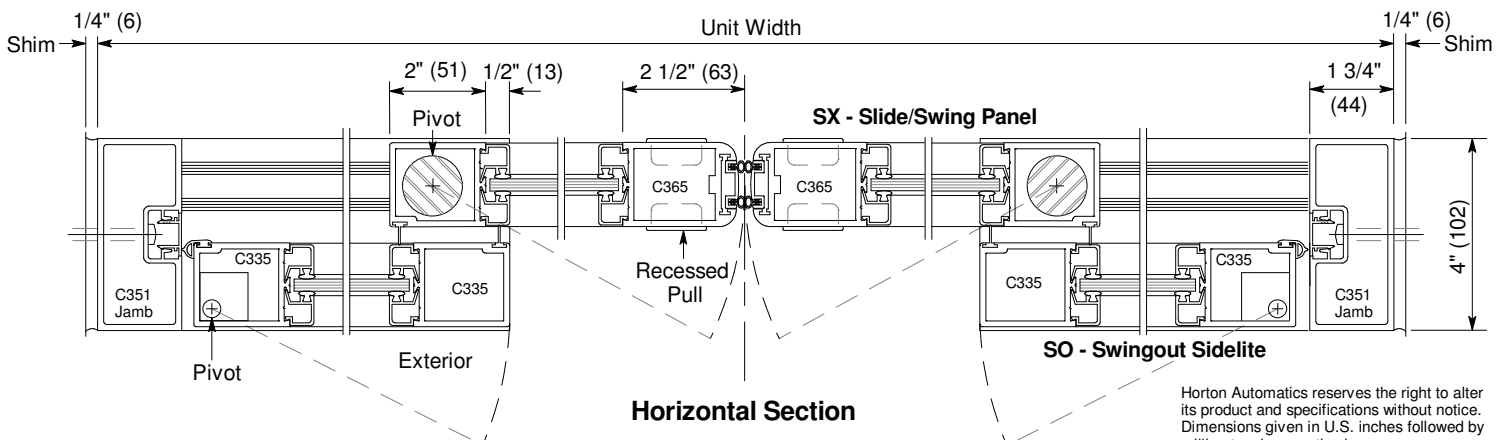


Exterior Elevation and Floor Plan



Vertical Section

Door shown in open position



Horizontal Section

Horton Automatics reserves the right to alter its product and specifications without notice. Dimensions given in U.S. inches followed by millimeters in parenthesis.