



® 4242 Baldwin Boulevard
 Corpus Christi, Texas
 USA 78405-3399
 Tel: 800-531-3111, 361-888-5591
 Fax: 800-531-3108, 361-888-6510
www.hortondoors.com
The Automatic Choice

ARCHITECTURAL DETAILS

MANUAL SLIDE DOORS - ICU / CCU

Profiler-ICU®

Type: 310T Telescoping SO-SX-SX-SX-SO

A10.7.1

Nov 16

Standard Packages

Unit Width	Slide Opening	Breakout Opening	1st Slide Panel Width	2nd Slide Panel Width	Sidelite Width	Rough Opening Width
8'-0" (2438)	4' - 6" (1372)	6'-5 1/2" (1969)	1' - 4 1/2" (419)	1' - 4" (406)	1' - 6 3/4" (476)	8'-0 1/2" (2451)
9'-0" (2743)	5' - 2" (1575)	7'-5 1/2" (2273)	1' - 6 1/2" (470)	1' - 6" (457)	1' - 8 3/4" (527)	9'-0 1/2" (2756)
10'-0" (3150)	5'-10" (1778)	8'-5 1/2" (2578)	1' - 8 1/2" (521)	1' - 8" (508)	1'-10 3/4" (578)	10'-0 1/2" (3061)
11'-0" (3353)	6' - 6" (1981)	9'-5 1/2" (2883)	1'-10 1/2" (571)	1'-10" (559)	2' - 0 3/4" (629)	11'-0 1/2" (3353)
12'-0" (3658)	7' - 2" (2184)	10'-5 1/2" (3188)	2' - 0 1/2" (622)	2' - 0" (610)	2' - 2 3/4" (679)	12'-0 1/2" (3670)
14'-0" (4267)	8' - 6" (2591)	12'-5 1/2" (3797)	2' - 4 1/2" (724)	2' - 4" (711)	2' - 4 3/4" (730)	14'-0 1/2" (4280)

Unit Height: 7'-2 1/2" (2197), Rough Opening Height: 7'-2 3/4" (2203)
Glazing: Standard unit prep'd for 1/4" (6) glazing.

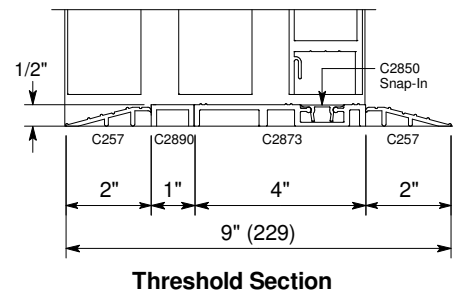
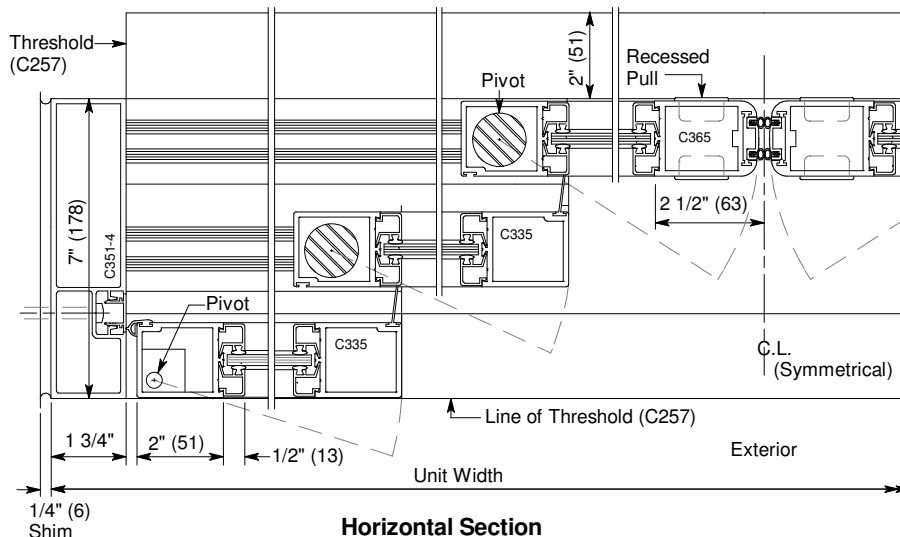
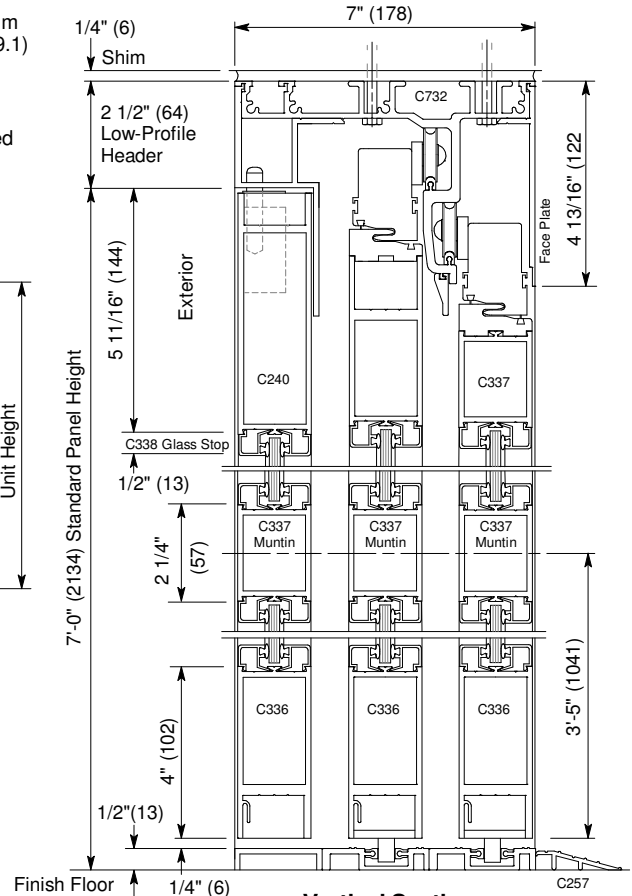
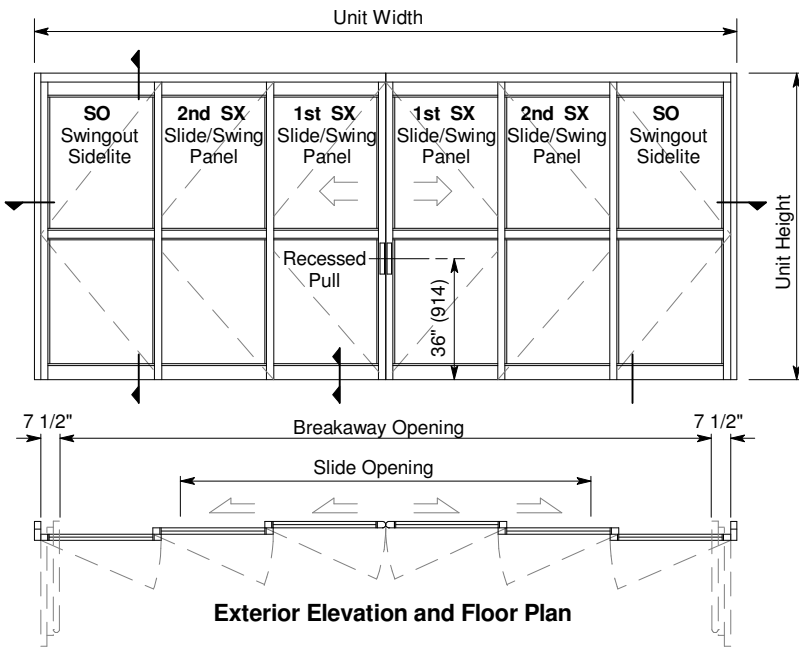
Anodized Finish:
 Clear or Dark Bronze

Options

- Positive Latching (p.A11.1)
- Custom unit widths between 8'-0" & 14'-0".
- Custom unit height to 8'-2 1/2".
- Custom mid-rails & bottom rails (A5.4) and jambs (p.A5.2).
- Medium stile construction (slide opening reduced by 1").
- Wide stile construction (slide opening reduced by 2 1/4").
- Custom anodized or paint finish or stainless steel cladding.
- Custom glazing from 5/8" to 1" (p.A5.5).

Installation and Operation

- Door perimeter mounted within curtainwall or rough opening with 1/4" minimum shim space at header & jambs. Finish floor not to exceed 1/4" out of level. (See page A9.1)
- Sliding panels roll on nylon covered track at header for quiet, smooth, anti-friction operation.
- Standard sliding panel (SX) glazed with 1/4" tempered glass (shown) can be opened with 8 to 12 lbs of force. SX panel can swing out min. 90° at any point of travel requiring no more than 50 lbs of force applied at the strike stile.



Horton Automatics reserves the right to alter its product and specifications without notice. Dimensions given in U.S. inches followed by millimeters in parenthesis.