



© 4242 Baldwin Boulevard
 Corpus Christi, Texas
 USA 78405-3399
 Tel: 800-531-3111, 361-888-5591
 Fax: 800-531-3108, 361-888-6510
 www.hortondoors.com
The Automatic Choice

ARCHITECTURAL DETAILS

MANUAL DOORS - ICU / CCU

ICU Bi-Fold/Bi-Swing™

A10.8

Type: Fold-Swing or Swing-Fold

May 10

Standard Packages

Unit Width	BiFold Panels Width	BiFold Panels Reach	Fold/Swing Opening	Breakout Opening	Rough Opening Width
6'-0" (1829)	2'-6" (752)	1'-0" (305)	4'-8" (1422)	4'-11" (1499)	6'-0 1/2" (1842)
7'-0" (2134)	3'-6" (1067)	1'-3" (381)	5'-8" (1727)	5'-11" (1803)	7'-0 1/2" (2146)
8'-0" (2438)	4'-6" (1372)	1'-6" (457)	6'-8" (2032)	6'-11" (2108)	8'-0 1/2" (2451)

Unit Height: 7'-2 3/4" (2203), **Rough Opening Height:** 7'-3" (2210)
Swing Panel Width: 36" (914), **Swing Reach:** 2'-7" (787)
Glazing: Standard unit prep'd for 1/4" (6) glazing.

Anodized Finish:
 Clear or Dark Bronze

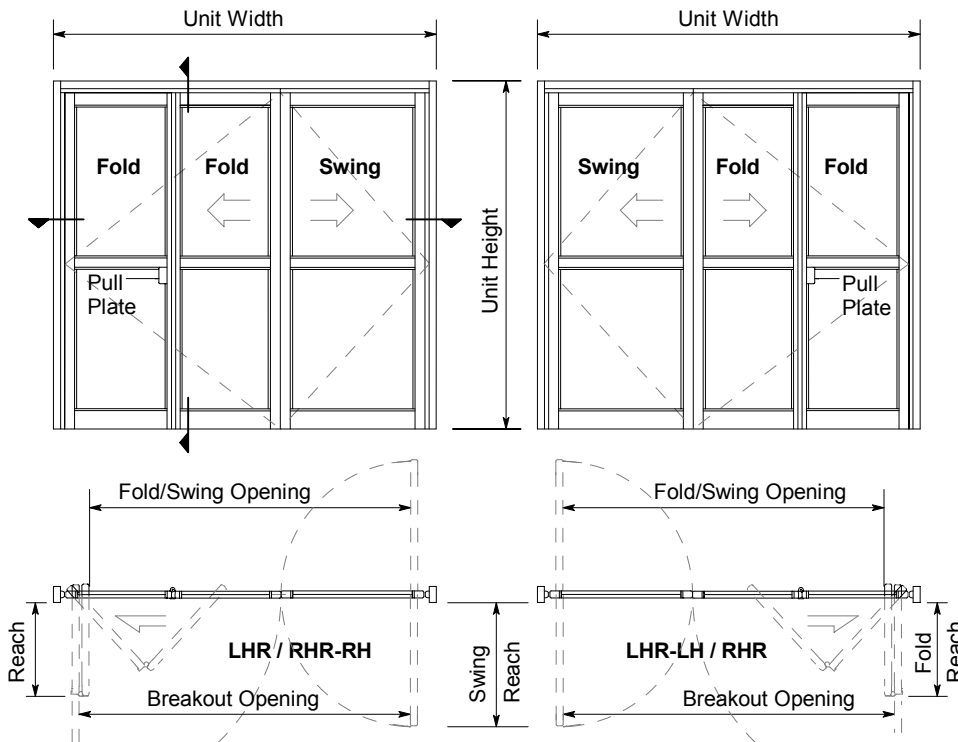
Options

- Fold-In Panels (Fold-Out Panels Shown)
- Hold-Open Closer for Swing Panel
- Pull Handle for Swing Panel
- Custom Glazing, Finishes and Sizes
- 6" (152) Header

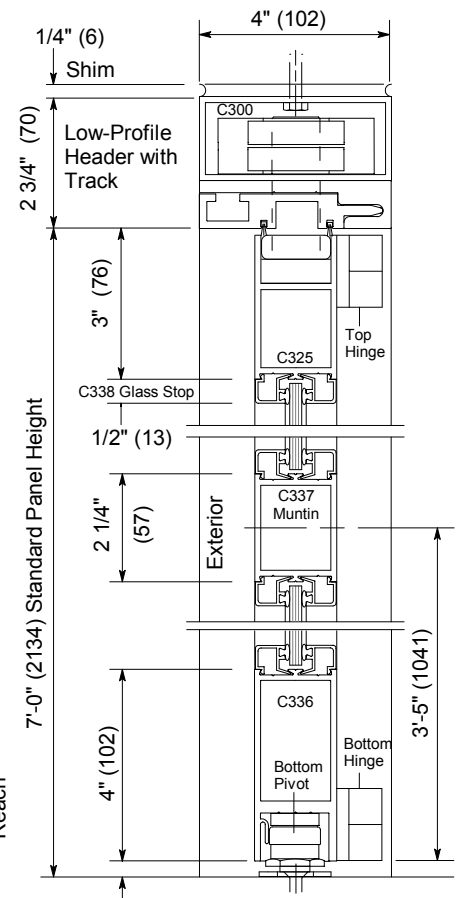
For standard and optional equipment details see Arch. Specs., page A13.0, and Spec. Details on pages A11.1 & A11.3.

Installation and Operation

- Door perimeter mounted within curtainwall or rough opening with 1/4" minimum shim space at header & jambs. Finish floor not to exceed 1/4" out of level. (See page A9.1)
- Bifolding panel with center pull combined with 3'-0" wide swing panel allows for extra wide opening. Swing panel equipped with overhead concealed double-acting door closer.
- Standard folding panel glazed with 1/4" tempered glass (shown) can be opened with 4 to 6 lbs of force.

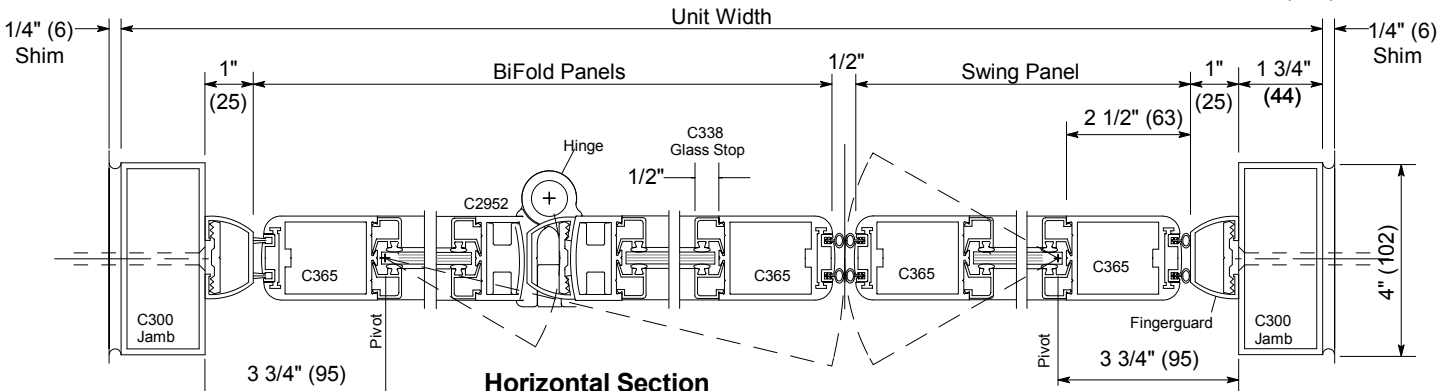


Exterior Elevations and Floor Plans



Vertical Section

Door shown in open position



Horizontal Section

LHR / RHR-RH shown. LRH-LH / RHR opposite.