



© 4242 Baldwin Boulevard  
 Corpus Christi, Texas  
 USA 78405-3399  
 Tel: 800-531-3111, 361-888-5591  
 Fax: 800-531-3108, 361-888-6510  
 www.hortondoors.com  
 The Automatic Choice

# ARCHITECTURAL DETAILS

MANUAL DOORS - ICU / CCU

ICU Bi-Fold™

A10.9

Type: Single LHR or RHR, Fold-out

Aug 08

## Standard Packages

| Unit Width   | Fold Opening | Breakout Opening | Fold Reach  | Breakout Reach   | Rough Opening Width |
|--------------|--------------|------------------|-------------|------------------|---------------------|
| 3'-8" (1118) | 2'-8" (813)  | 2'-11" (889)     | 1'-3" (381) | 2'-10 3/4" (730) | 3'-8 1/2" (1130)    |
| 4'-0" (1219) | 3'-0" (914)  | 3'-3" (991)      | 1'-5" (432) | 3'-6 3/4" (794)  | 4'-0 1/2" (1232)    |

**Unit Height:** 7'-2 3/4" (2203), **Rough Opening Height:** 7'-3" (2210)  
**Glazing:** Standard unit prep'd for 1/4" (6) glass. Glass provided by others.  
**Anodized Finish:** Clear or Dark Bronze

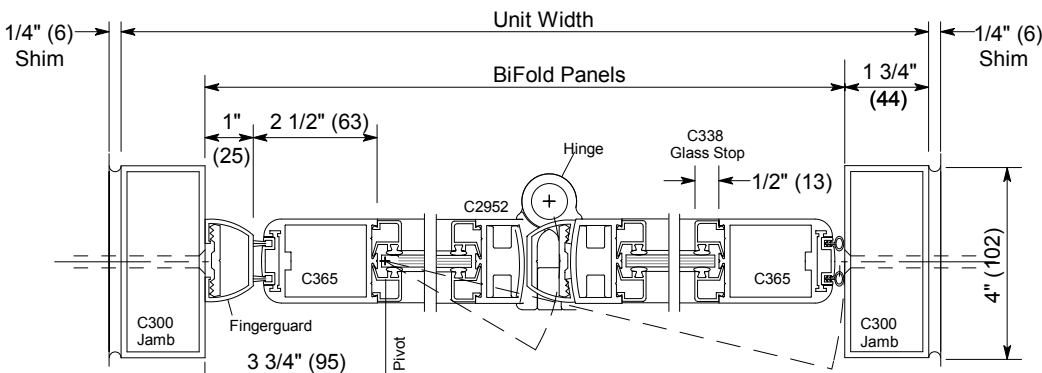
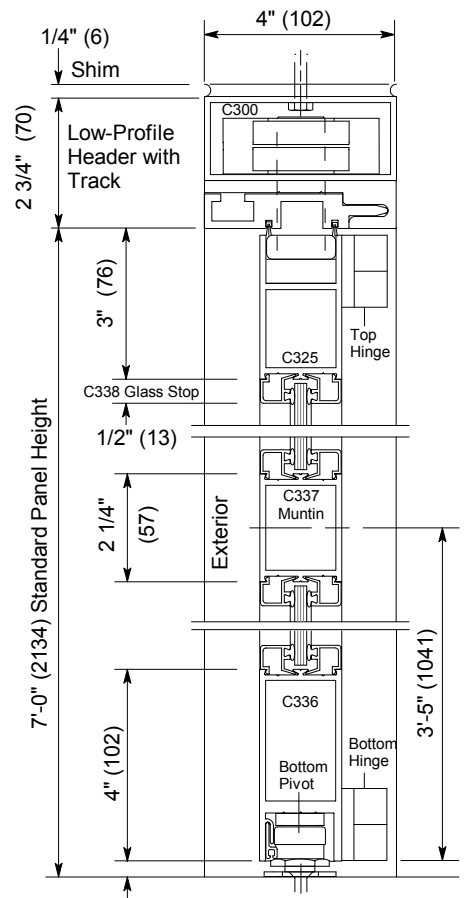
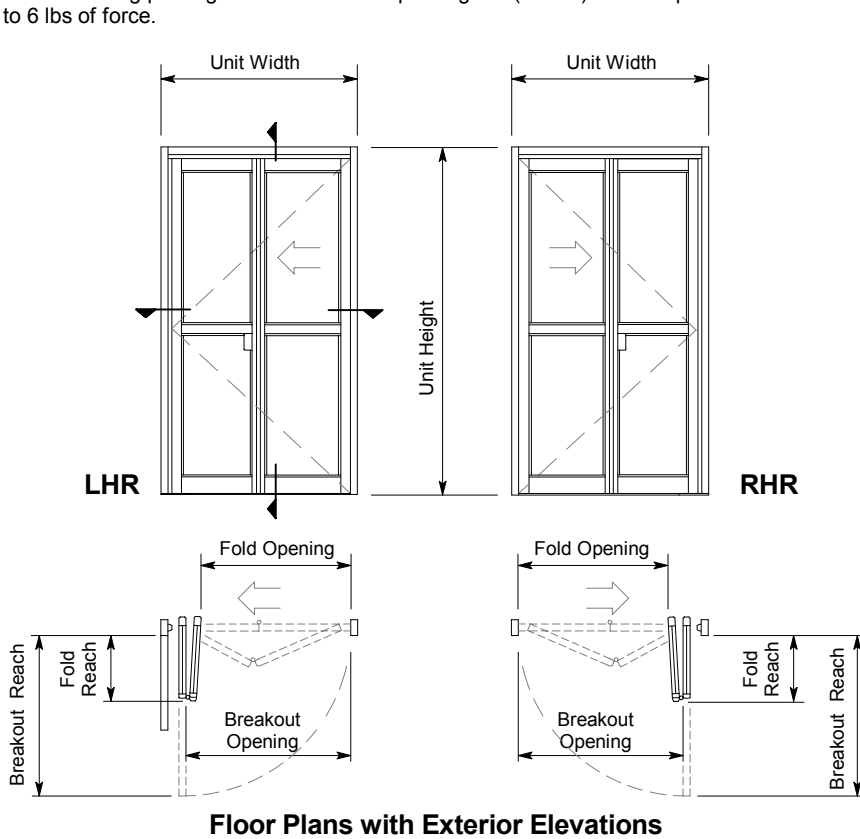
## Options

- Fold-In Panels (Fold-Out Panels Shown)
- Medium & Wide Stile Rails
- Additional Muntins and/or Push Bars
- Custom Glazing, Finishes and Sizes
- Transom

For standard and optional equipment details see Arch. Specs., page A14.0, and Spec. Details on pages A11.0 & A11.1.

## Installation and Operation

- Door perimeter mounted within curtainwall or rough opening with 1/4" minimum shim space at header & jambs. Finish floor not to exceed 1/4" out of level. (See page A9.1)
- Standard folding panel glazed with 1/4" tempered glass (shown) can be opened with 4 to 6 lbs of force.



Horton Automatics reserves the right to improve the product and change its specifications without notice. Dimensions given in U.S. Inches followed by Millimeters in parenthesis.