



4242 Baldwin Boulevard
 Corpus Christi, Texas
 USA 78405-3399
 Tel: 800-531-3111, 361-888-5591
 Fax: 800-531-3108, 361-888-6510
 www.hortondoors.com
 The Automatic Choice

ARCHITECTURAL DETAILS

MANUAL SLIDE DOORS - ICU / CCU

Profiler-ICU® Smoke Rated

A10.24.1

Type: 010 Single Slide P-X or X-P Surface Applied

June 17

Standard Packages

Unit Width	Slide Opening	Wall Opening	Slide Panel Width
7'-0" (2134)	3'-0" (914)	3'-3 1/2" (1003)	3'-6" (1067)
8'-0" (2438)	3'-6" (1067)	3'-9 1/2" (1156)	4'-0" (1219)
8'-6" (2591)	3'-9" (1143)	4'-0 1/2" (1232)	4'-3" (1295)
9'-0" (2743)	4'-0" (1219)	4'-3 1/2" (1308)	4'-6" (1372)

Unit Height: 7'-2 1/2" (2197) Wall Opening Height: 7'-0" (2134) Glazing: Standard unit prep'd for 1/4" (6) glazing.	Anodized Finish: Clear or Dark Bronze
--	--

Compliant with:

- UL 1784 Air Leakage Test of Door Assemblies
- NFPA 105 Standard for Installation of Smoke Door Assemblies

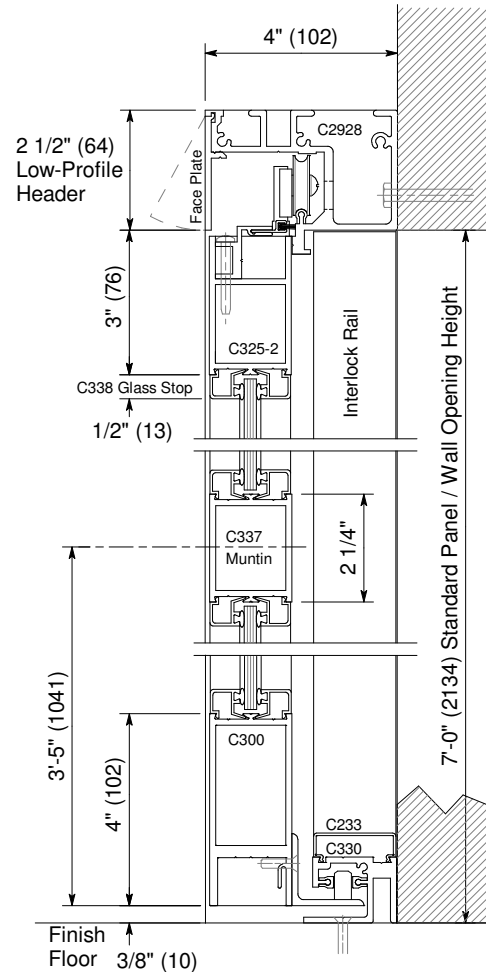
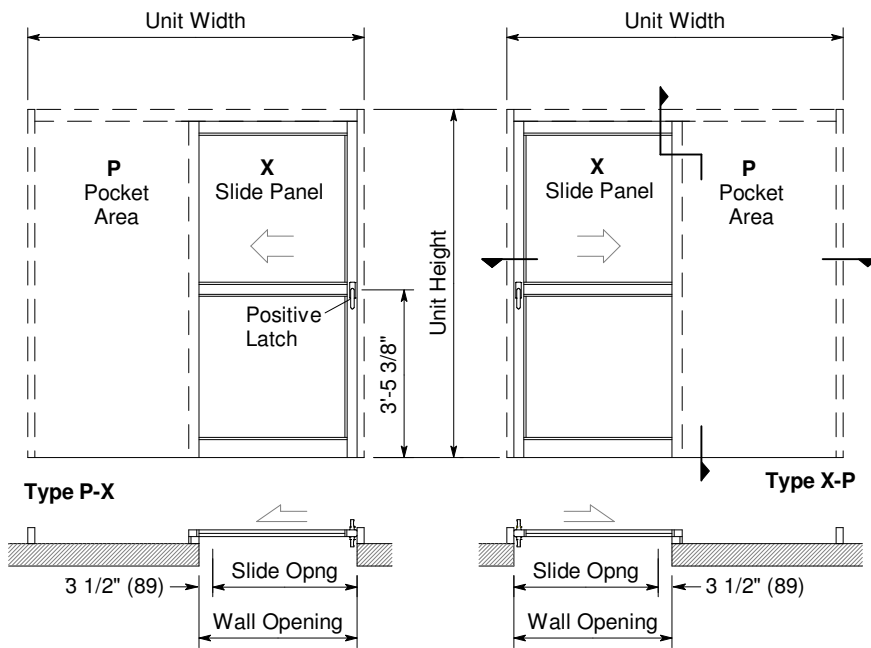
Options:

- Custom Sizes, Finishes & Glazing
- Antimicrobial coating

For Arch. Specifications see p. A16.1.

Installation and Operation

- Door surface mounted to wall. Finish floor not to exceed 1/4" out of level.
- Sliding panel rolls on nylon covered track at header for quiet, smooth, anti-friction operation.
- Standard sliding panel (X) glazed with 1/4" tempered glass (shown) can be opened with 8 to 12 lbs of force after positive latch is released.



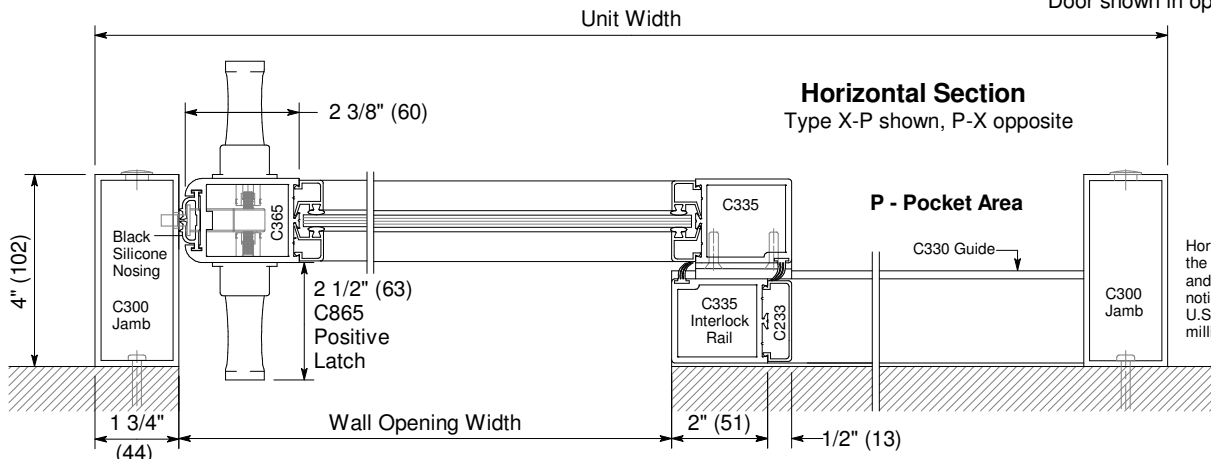
Exterior Elevations and Floor Plans

Vertical Section

Door shown in open position

Horizontal Section

Type X-P shown, P-X opposite



Horton Automatics reserves the right to alter its product and specifications without notice. Dimensions given in U.S. inches followed by millimeters in parenthesis.