



4242 Baldwin Boulevard
 Corpus Christi, Texas
 USA 78405-3399
 Tel: 800-531-3111, 361-888-5591
 Fax: 800-531-3108, 361-888-6510
 www.hortondoors.com
 The Automatic Choice

ARCHITECTURAL DETAILS

MANUAL SLIDE DOORS - ICU / CCU

Profiler-ICU® Smoke Rated

A10.24.2

Type: 010 Single Slide O-X or X-O

June 17

Standard Packages

Unit Width	Slide Opening	Slide Panel Width	Sidelite Width	Rough Opening Width
7'-0" (2134)	3'-0" (914)	3'-6" (1067)	3'-5" (1041)	7'-0 1/2" (2146)
8'-0" (2438)	3'-6" (1067)	4'-0" (1219)	3'-11" (1194)	8'-0 1/2" (2451)
8'-6" (2591)	3'-9" (1143)	4'-3" (1295)	4'-2" (1270)	8'-6 1/2" (2604)
9'-0" (2743)	4'-0" (1219)	4'-6" (1372)	4'-5" (1346)	9'-0 1/2" (2756)

Standard Unit Height: 7'-2 1/2" (2197) Rough Opening Height: Unit Ht. + 1/4" (6) Glazing: Standard unit prep'd for 1/4" (6) glazing.	Anodized Finish: Clear or Dark Bronze
---	---

Compliant with:

- UL 1784 Air Leakage Test of Door Assemblies
- NFPA 105 Standard for Installation of Smoke Door Assemblies

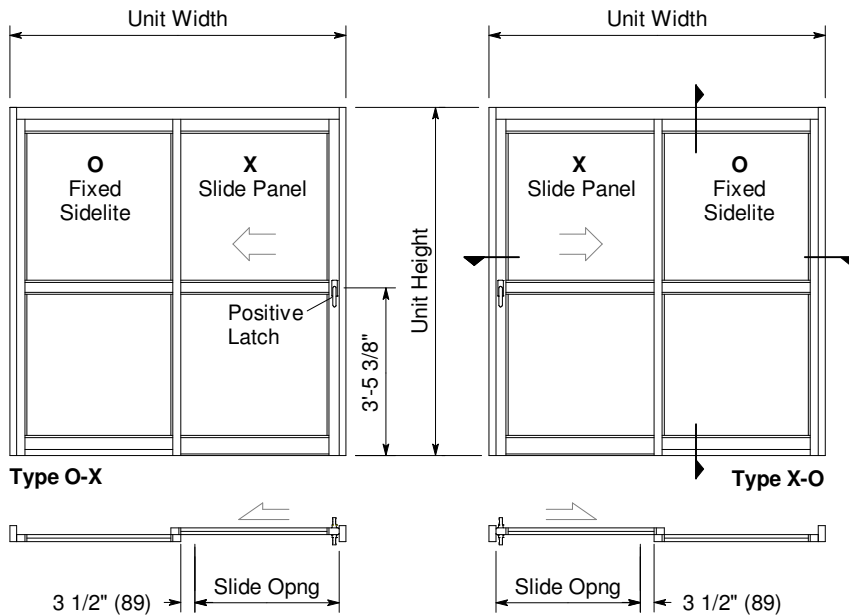
Options:

- Custom Sizes, Finishes & Glazing
- Antimicrobial coating

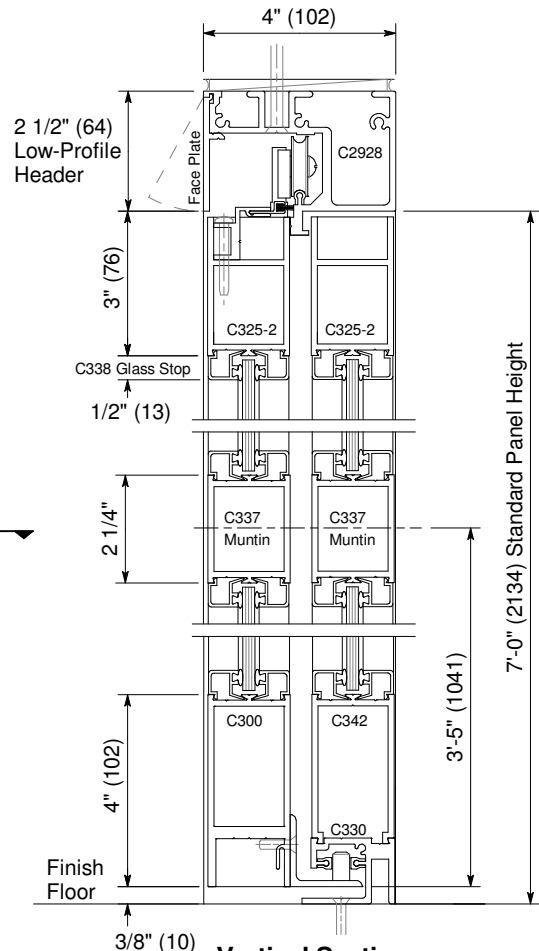
For Arch. Specifications see p. A16.1.

Installation and Operation

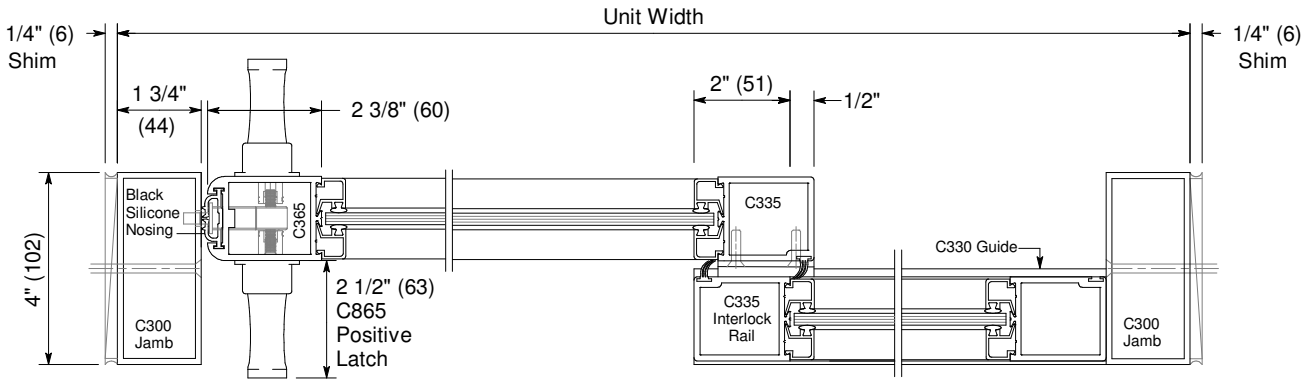
- Door perimeter mounted within curtain wall or rough opening with 1/4" minimum shim space at header & jambs. Finish floor not to exceed 1/4" out of level.
- Sliding panel rolls on nylon covered track at header for quiet, smooth, anti-friction operation.
- Standard sliding panel (X) glazed with 1/4" tempered glass (shown) can be opened with 8 to 12 lbs of force after positive latch is released.



Exterior Elevations and Floor Plans



Vertical Section
 Door shown in open position



Horizontal Section
 Type X-O shown, O-X opposite

Horton Automatics reserves the right to alter its product and specifications without notice. Dimensions given in U.S. inches followed by millimeters in parenthesis.