



® 4242 Baldwin Boulevard
 Corpus Christi, Texas
 USA 78405-3399
 Tel: 800-531-3111, 361-888-5591
 Fax: 800-531-3108, 361-888-6510
 www.hortondoors.com
 The Automatic Choice

ARCHITECTURAL DETAILS

MANUAL SLIDE DOORS - ICU / CCU

Profiler-ICU® Self-Closing Trackless A10.27
Type: 310 Single Slide SO-SX or SX-SO Sept 09

Standard Packages

Unit Width	Slide Opening	Slide Opening without Positive Latch	Breakout Opening	Slide Panel Width	Sidelite Width	Rough Opening Width
7'-0" (2134)	2'-8 7/8" (835)	3'-0" (914)	6'-3" (1905)	3'-9 1/8" (1146)	3'-5" (1041)	7'-0 1/2" (2146)
8'-0" (2438)	3'-2 7/8" (987)	3'-6" (1067)	7'-3" (2210)	4'-3 1/8" (1298)	3'-11" (1194)	8'-0 1/2" (2451)
8'-6" (2591)	3'-5 7/8" (1063)	3'-9" (1143)	7'-9" (2362)	4'-6 1/8" (1375)	4'-2" (1270)	8'-6 1/2" (2604)
9'-0" (2743)	3'-8 7/8" (1140)	4'-0" (1219)	8'-3" (2515)	4'-9 1/8" (1451)	4'-5" (1346)	9'-0 1/2" (2756)

Unit Height: 7'-6" (2286)
Rough Opening Height: 7'-6 1/4" (2292)
Glazing: Standard unit prep'd for 1/4" (6) glazing.

Anodized Finish:
 Clear or Dark Bronze

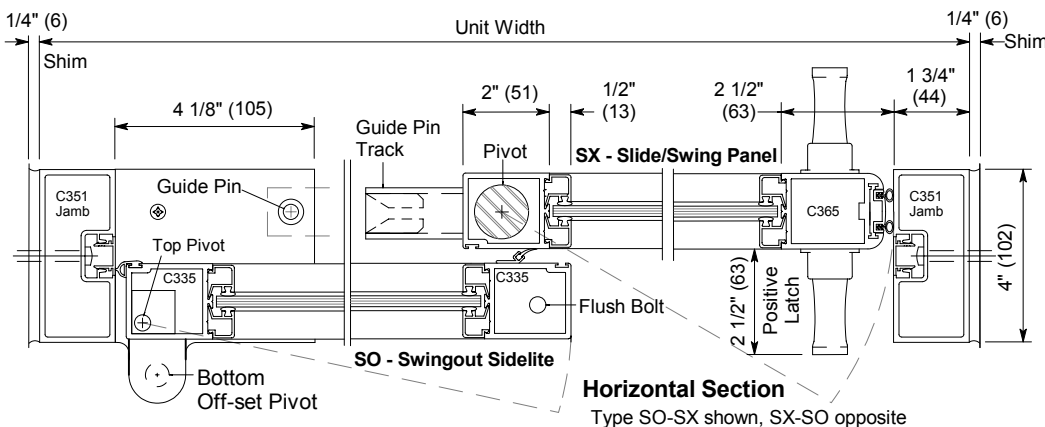
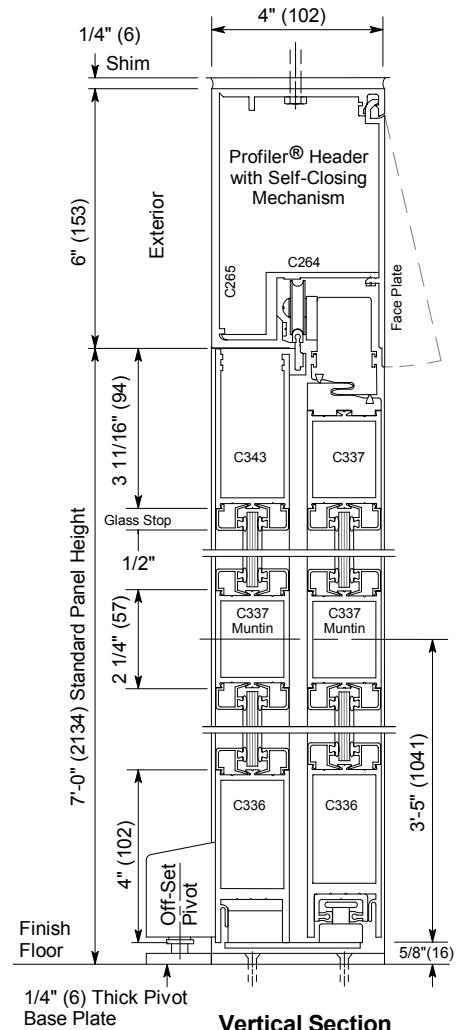
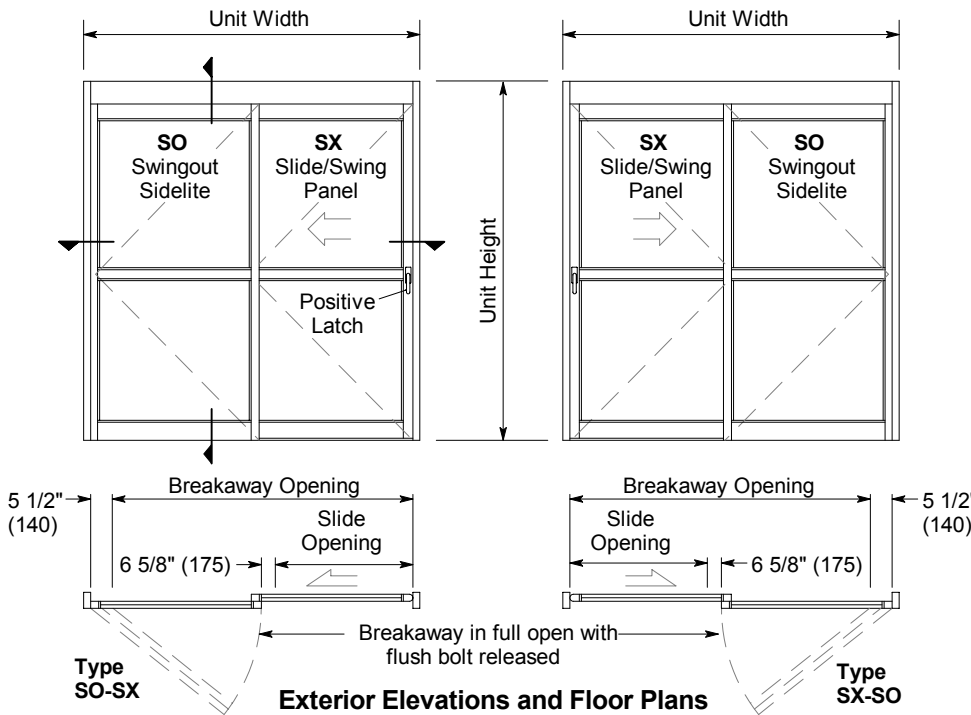
Options

- Flush Pulls in lieu of Positive Latching (Adds 3 1/8" to net slide)
- Custom Glazing, Finishes and Sizes
- Medium Stile Rails (slide opening will be reduced by 1 1/2")
- Wide Stile Rails (slide opening will be reduced by 2 3/4")

For Architectural Specifications see pages A20.0 thru A20.3.

Installation and Operation

- Door perimeter mounted within curtainwall or rough opening with 1/4" minimum shim space at header & jambs. Finish floor not to exceed 1/4" out of level. (See page A9.1)
- Sliding panel rolls on nylon covered track in header for quiet, smooth, anti-friction operation.
- Standard sliding panel (SX) can be opened, after positive latch is released, with 8 to 12 lbs of force. Unless "Hold-Open" is engaged, sliding panel will immediately begin to close with 6-8 lbs of force. Panels can swing out 90° at full open position, after flush bolt is released, requiring no more than 50 lbs of force applied at the strike stile.



Optional Recessed Pull
 (In Lieu of Positive Latch)