



© Horton Automatics World Headquarters
 4242 Baldwin Boulevard
 Corpus Christi, Texas 78405-3399 USA
 Tel: 800-531-3111, 361-888-5591
 Fax: 800-531-3108, 361-888-6510
 www.hortondoors.com
 AUTOMATICS The Automatic Choice

ARCHITECTURAL DETAILS

AUTOMATIC ICU / CCU ENTRANCES - AIRBORNE INFECTION CONTROL

Profiler® Series 2000-IDS-2

A10.30.1

Smoke Rated Automatic Isolation Door System

Type: 110 Single Slide O-SX or SX-O

July 19

Standard Packages

Unit Width	Slide Opening	Breakout Opening	Slide Panel Width	Sidelite Width	Rough Opening Width
8'-7" (2616)	3'-9 1/2" (1156)	4'-0 1/2" (1232)	4'-3 1/2" (1308)	4'-2 1/2" (1283)	8'-7 1/2" (2629)
9'-0" (2743)	4'-0" (1219)	4'-3 1/2" (1308)	4'-6" (1372)	4'-5" (1346)	9'-0 1/2" (2756)

Note: Consult factory for sizes smaller than 8'-7" (2616)

Unit Height: 7'-6" (2286)	Rough Opening Height: 7'-6 1/4" (2292)	Anodized Finish: Clear or Dark Bronze
Glazing: Standard unit prep'd for 1/4" (6) glass (by others)		See Arch. Specs. A23.1- 5

Compliant with:

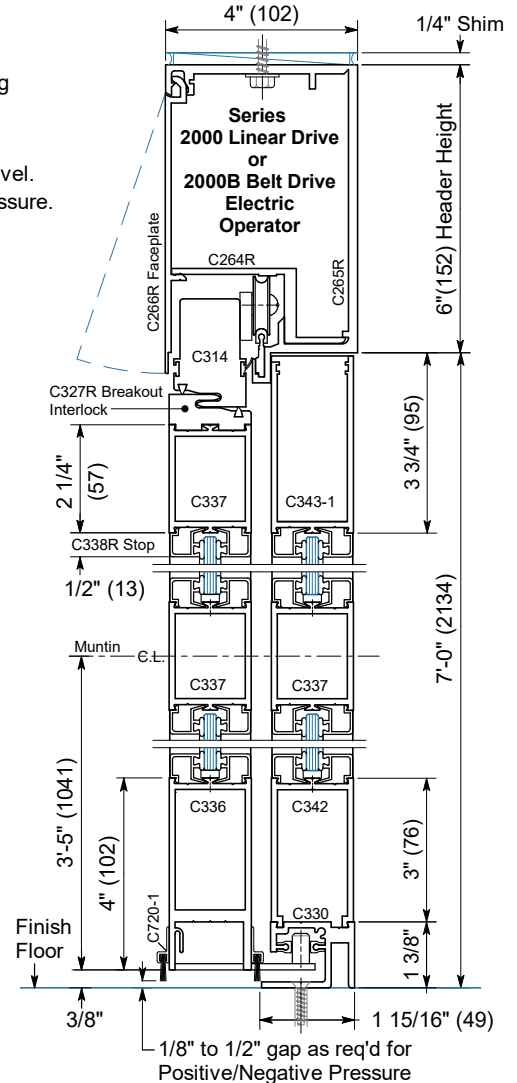
- 2018 FGI Guidelines for Airborne Infection Isolation Room Systems, Ref: A2.1-7.2.2.3 (2)(a)(i)
- ASTM E283-04 Standard Air Infiltration Test
 - Maintains positive/negative pressure
 - Perimeter seals factory installed
- UL 1784 Air Leakage Test of Door Assemblies
- NFPA 105 Std. for Installation of Smoke Doors

Options

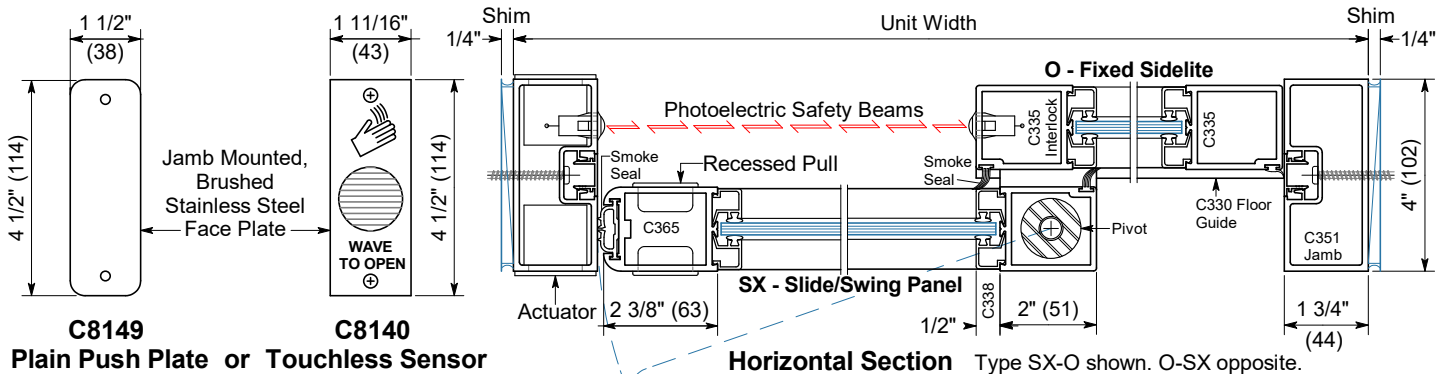
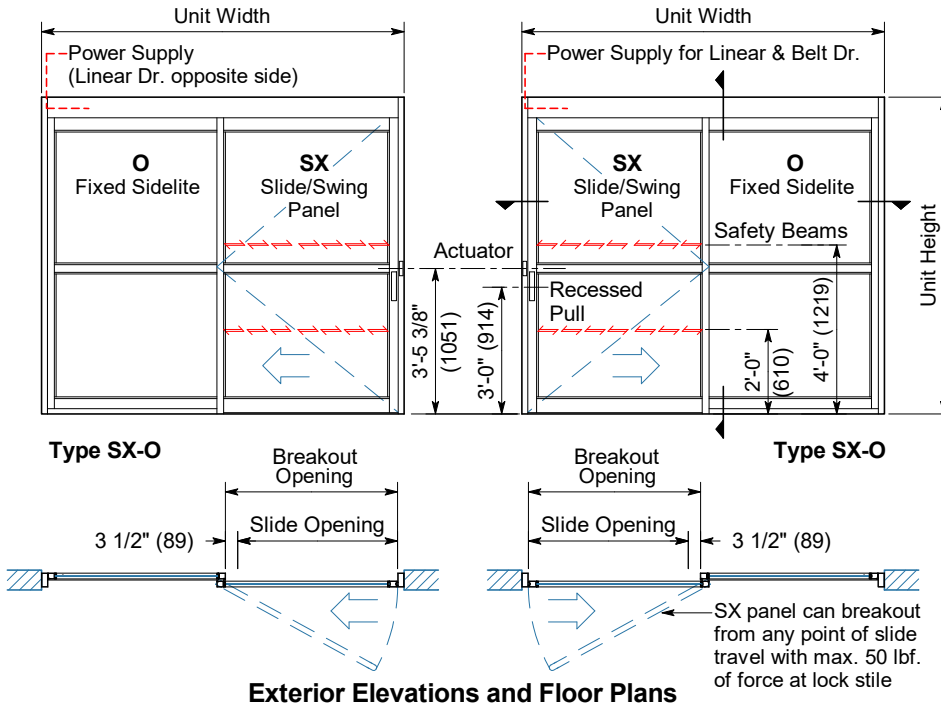
- Custom unit widths between 8'-7" & 9'-0"
- Custom unit heights between 7'-6" & 8'-0"
- Custom paint, anod. finish or Antimicrobial coating

Installation and Operation

- **Perimeter Mounted:** within curtainwall or rough opening. Finish floor not to exceed 1/4" out of level.
- **Field Applied Floor Seals:** 1/8" to 1/2" above finished floor as required for positive/negative pressure.
- **Electrical:** 120 VAC, 60 cycle, single phase, 20 amp service in conduit routed to header. Max. current draw is 3.15 amps. UPS (Uninterrupted Power Source) recommended.
- **Positive Latching:** Required for UL 1784 compliance. Provided by Fail-Safe AutoLock.
- **"Knowing Act" Activation:** Jamb mounted touchless sensor or push plate at interior & exterior for 2-way traffic. Door closes after time delay expires and slide opening is clear. Power-Fail Close Module closes door in event of power failure.



Vertical Section
 Door shown in open position



C8149 Plain Push Plate or Touchless Sensor
C8140