



© Horton Automatics World Headquarters
 4242 Baldwin Boulevard
 Corpus Christi, Texas 78405-3399 USA
 Tel: 800-531-3111, 361-888-5591
 Fax: 800-531-3108, 361-888-6510

www.hortondoors.com
 The Automatic Choice

ARCHITECTURAL DETAILS

AUTOMATIC ICU / CCU ENTRANCES - AIRBORNE INFECTION CONTROL

Profiler® Series 2000-IDS-2

A10.30.2

Smoke Rated Automatic Isolation Door System

Type: 110 Single Slide Surface Applied P-SX or SX-P

July 19

Standard Packages

Unit Width	Slide Opening	Breakout / Wall Opening	Slide Panel Width
8'-7" (2616)	3'-9 1/2" (1156)	4'-0 1/2" (1232)	4'-3 1/2" (1308)
9'-0" (2743)	4'-0" (1219)	4'-3 1/2" (1308)	4'-6" (1372)

Note: Consult factory for sizes smaller than 8'-7" (2616)

Unit Height: 7'-6" (2286)	Anodized Finish: Clear or Dark Bronze
Glazing: Standard unit prep'd for 1/4" (6) glass (by others)	See Arch. Specificatons. A23.1- 5

Compliant with:

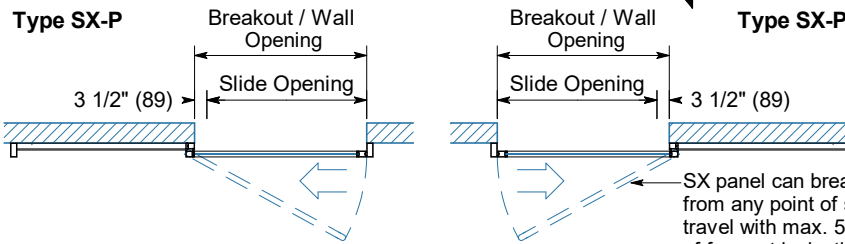
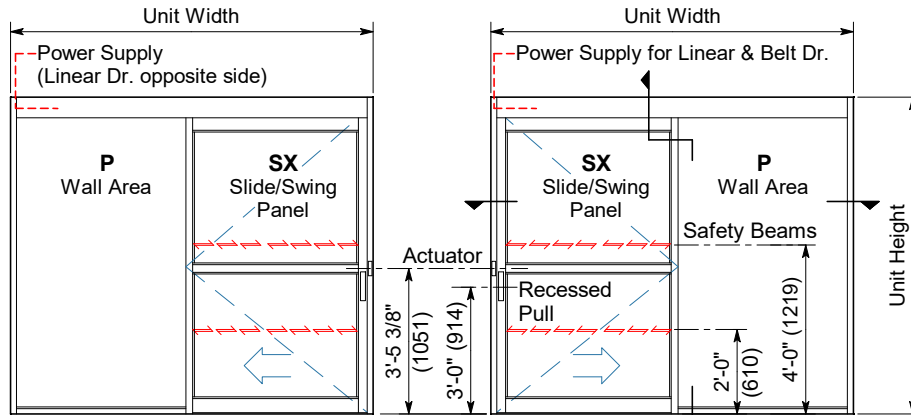
- 2018 FGI Guidelines for Airborne Infection Isolation Room Systems, Ref: A2.1-7.2.2.3 (2)(a)(i)
- ASTM E283-04 Standard Air Infiltration Test
 - Maintains positive/negative pressure
 - Perimeter seals factory installed
- UL 1784 Air Leakage Test of Door Assemblies
- NFPA 105 Std. for Installation of Smoke Door Assemblies

Options

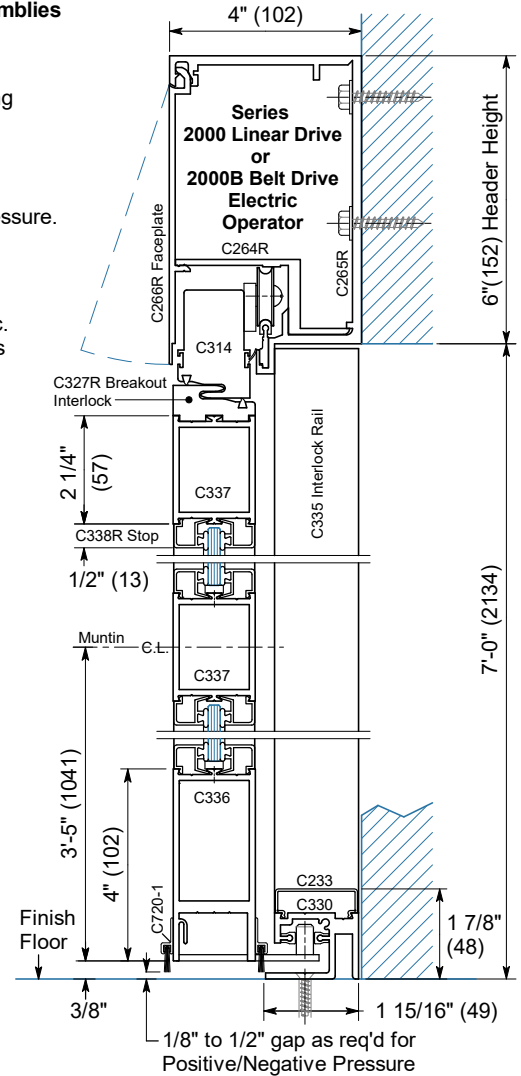
- Custom unit widths between 8'-7" & 9'-0"
- Custom unit heights between 7'-6" & 8'-0"
- Custom paint, anod. finish or Antimicrobial coating

Installation and Operation

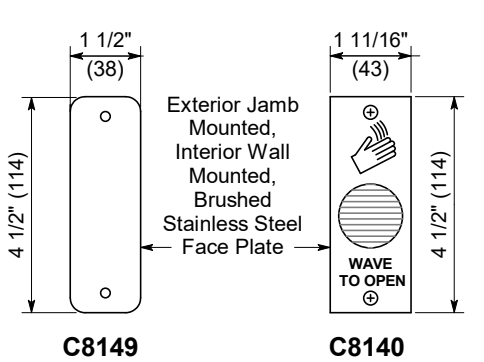
- **Surface Mounted:** onto exterior finish wall. Finish floor not to exceed 1/4" out of level.
- **Field Applied Floor Seals:** 1/8" to 1/2" above finished floor as required for positive/negative pressure.
- **Electrical:** 120 VAC, 60 cycle, single phase, 20 amp service in conduit routed to header. Max. current draw is 3.15 amps. UPS (Uninterrupted Power Source) recommended.
- **Positive Latching:** Required for UL 1784 compliance. Provided by Fail-Safe Autolock.
- **"Knowing Act" Activation:** Touchless sensor or push plate at interior & exterior for 2-way traffic. Door closes after time delay expires and slide opening is clear. Power-Fail Close Module closes door in event of power failure.



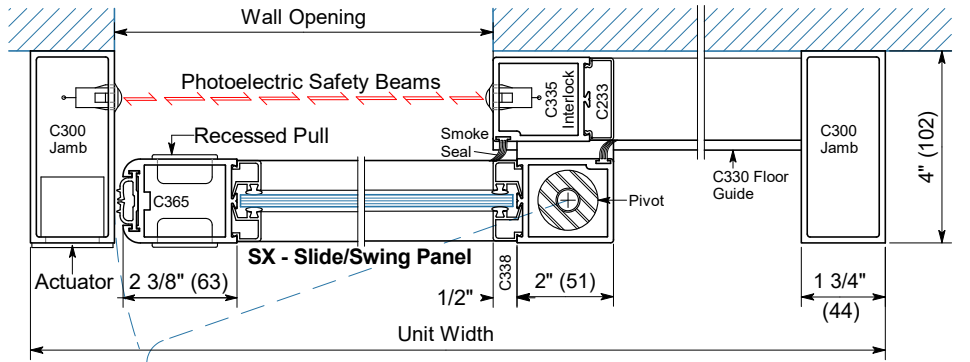
Exterior Elevations and Floor Plans



Vertical Section
 Door shown in open position



C8149 Plain Push Plate or Touchless Sensor
 C8140



Horizontal Section Type SX-P shown. P-SX opposite.