



® 4242 Baldwin Boulevard
 Corpus Christi, Texas
 USA 78405-3399
 Tel: 800-531-3111, 361-888-5591
 Fax: 800-531-3108, 361-888-6510
 www.hortondoors.com
 The Automatic Choice

ARCHITECTURAL DETAILS

SLIDING AUTOMATIC ENTRANCES - BLAST RATED

ProSlide™-Blast Series

AB1.0

Type: Medium Stile 010 Single Slide

Sept 14

Standard Packages

Unit Width	Slide Opening	Slide Panel Width	Sidelite Width	Rough Opening Width
7'-0" (2134)	2'-10 1/4" (870)	3'-7 1/4" (1098)	3'-6 1/4" (1073)	7'-0 1/2" (2146)
Max Unit Height: 7'-6 3/8" (2295)		Rough Opening Height: 7'-6 5/8" (2302)		Anodized Finish: Clear or Dark Bronze
Glazing: Standard unit prep'd for nominal 9/16" glass. Glass by others.				

Compliant with UFC 4-010-01

Designed to DoD Minimum Antiterrorism Standards for Buildings.

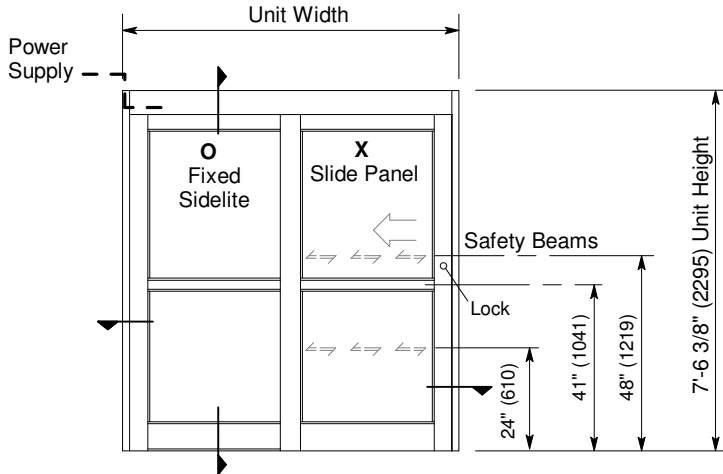
- ASTM F2248

Options

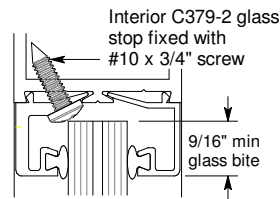
- Custom anodized or paint finish or stainless steel cladding.

Installation & Operation

- Door perimeter mounted within rough opening with 1/4" max. shim space at header & jambs. Shims sufficient to resist rotation of frame. All fasteners must penetrate & extend 1.5" minimum into substrate. Finish floor not to exceed 1/4" out of level.
- Electrical: Provide 120 VAC, 60 cycle, single phase, 15 amp service (in conduit) to each unit on dedicated 20 amp circuit breaker routed to header. Maximum current draw is 3.15 amps.
- Door actuated with header mounted motion sensor at interior and exterior for 2-Way traffic.
- Manual Locking: Exterior keylock and interior thumbturn provided for 3-point lock at vertical strike rail: 3/8" hex bolt locks into head and sill, 5/8" hookbolt latches into adjacent strike rail.

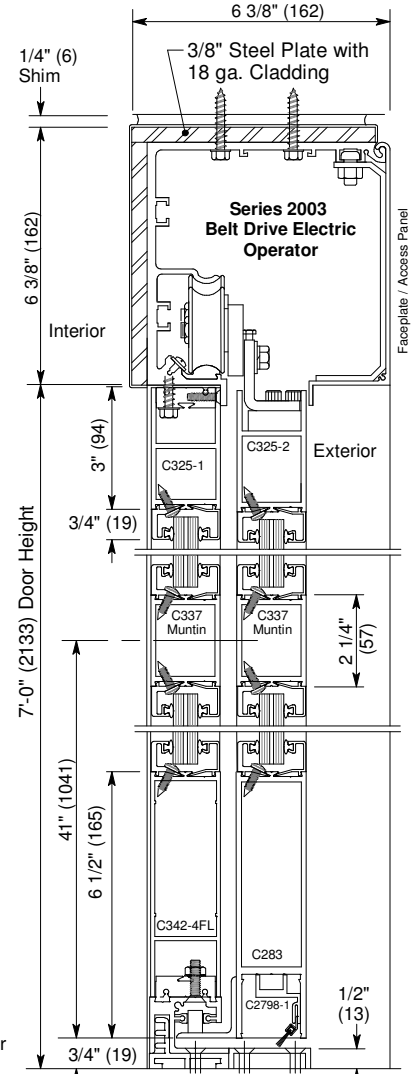


Exterior Elevation and Floor Plan



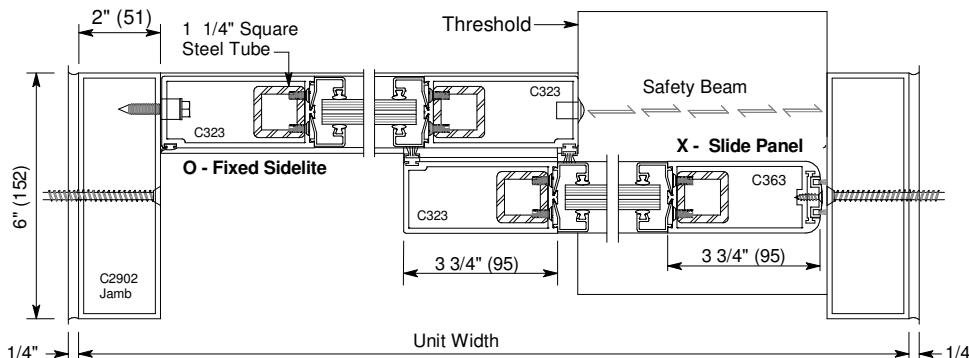
Glass Detail

Nominal 9/16" thick laminated glass:
 * 1/4" heat strengthened glass (2 layers)
 * 0.075" Solutia Vanceva composite interlayer

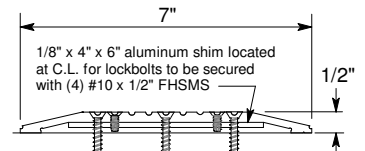


Vertical Section

Door shown in open position



Horizontal Section



Threshold Section