



® 4242 Baldwin Boulevard  
 Corpus Christi, Texas  
 USA 78405-3399  
 Tel: 800-531-3111, 361-888-5591  
 Fax: 800-531-3108, 361-888-6510  
 www.hortondoors.com  
 The Automatic Choice

# ARCHITECTURAL DETAILS

## SLIDING AUTOMATIC ENTRANCES - BLAST RATED

**ProSlide™-Blast Series**  
 Type: Medium Stile 010 Biparting

AB1.1

Sept 14

### Standard Packages

Unit Width	Slide Opening	Slide Panel Width	Sidelite Width	Rough Opening Width
10'-0" (3048)	3'-9 1/4" (1149)	2'-7 5/8" (803)	2'-7 7/8" (810)	10'-0 1/2" (3061)
12'-0" (3658)	4'-9 1/4" (1454)	3'-1 5/8" (956)	3'-1 7/8" (962)	12'-0 1/2" (3670)
14'-0" (4267)	5'-9 1/4" (1759)	3'-7 5/8" (1108)	3'-7 7/8" (1114)	14'-0 1/2" (4280)

**Max Unit Height:** 7'-6 3/8" (2295) **Rough Opening Height:** 7'-6 5/8" (2302)  
**Glazing:** Standard unit prep'd for nominal 9/16" glass. Glass by others. **Anodized Finish:** Clear or Dark Bronze

### Compliant with UFC 4-010-01

Designed to DoD Minimum Antiterrorism Standards for Buildings.

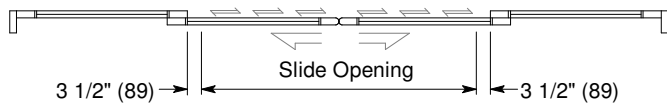
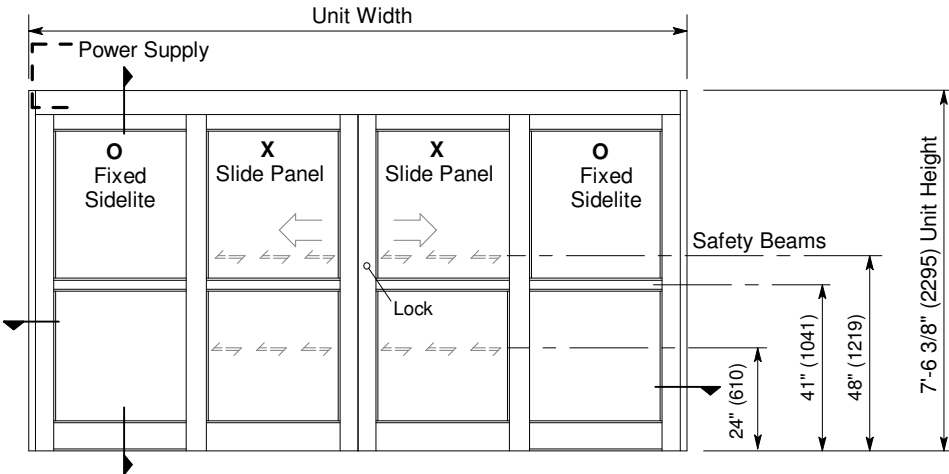
- ASTM F2248

### Options

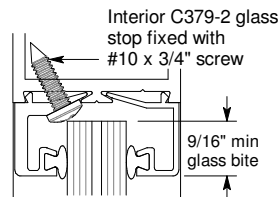
- Custom anodized or paint finish or stainless steel cladding
- Custom unit widths between 10'-0" & 14'-0".

### Installation & Operation

- Door perimeter mounted within rough opening with 1/4" max. shim space at header & jambs. Shims sufficient to resist rotation of frame. All fasteners must penetrate & extend 1.5" minimum into substrate. Finish floor not to exceed 1/4" out of level.
- Electrical: Provide 120 VAC, 60 cycle, single phase, 15 amp service (in conduit) to each unit on dedicated 20 amp circuit breaker routed to header. Maximum current draw is 3.15 amps.
- Door actuated with header mounted motion sensor at interior and exterior for 2-Way traffic.
- Manual Locking: Exterior keylock and interior thumbturn provided for 3-point lock at vertical strike rail: 3/8" hex bolt locks into head and sill, 5/8" hookbolt latches into adjacent strike rail.

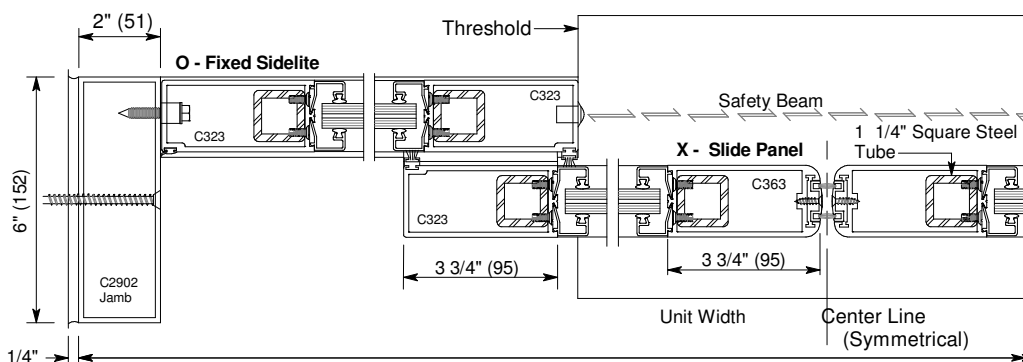


**Exterior Elevation and Floor Plan**

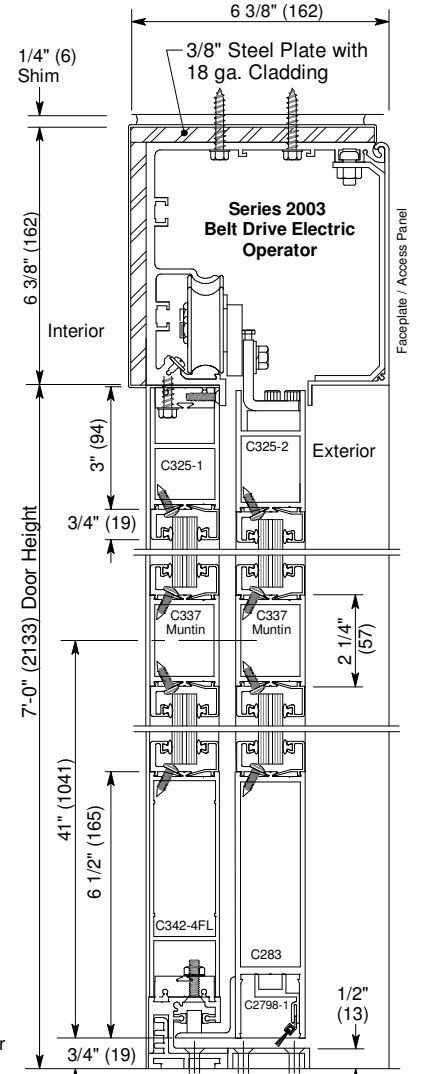


### Glass Detail

Nominal 9/16" thick laminated glass:  
 \* 1/4" heat strengthened glass (2 layers)  
 \* 0.075" Solutia Vanceva composite interlayer

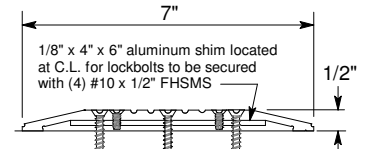


**Horizontal Section**



### Vertical Section

Door shown in open position



**Threshold Section**