



® 4242 Baldwin Boulevard
Corpus Christi, Texas
USA 78405-3399
Tel: 800-531-3111, 361-888-5591
Fax: 800-531-3108, 361-888-6510
www.hortondoors.com
The Automatic Choice

ARCHITECTURAL DETAILS

POWER SWING DOOR OPERATORS

**EasyAccess® Series 7100 Surface Applied
Double Egress**

B2.4.1

Aug 18

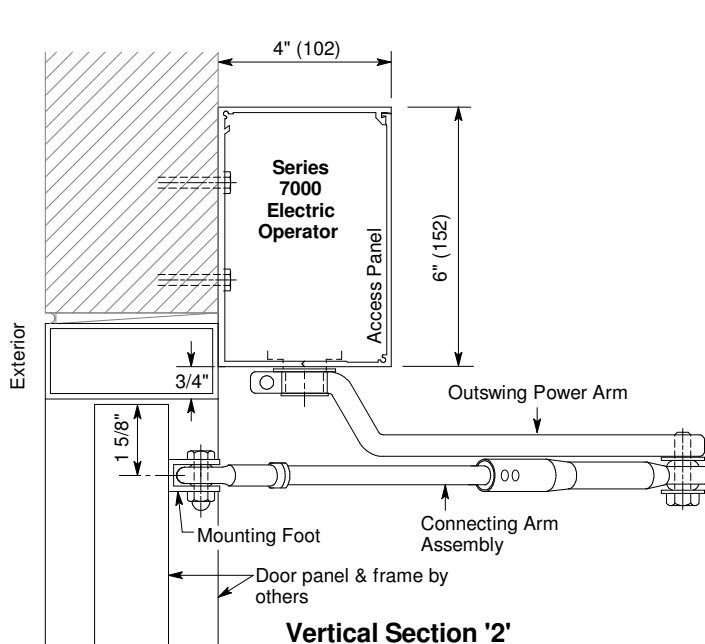
Standard Packages

Double Egress Units	
Types: LH-RHR, LHR-RH	
Door Pair Width	Header Width
5'-0" (1524)	5'-3" (1600)
6'-0" (1829)	6'-3" (1905)
7'-0" (2133)	7'-3" (2210)
Anodized Finish: Clear or Dark Bronze	

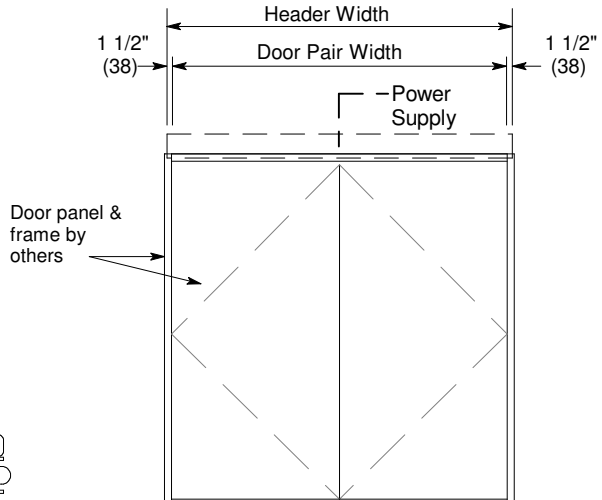
Installation and Operation

- Swing door header is surface mounted onto frame and connecting arm assembly is mounted to face of door panel. Frame and door panel to be provided by others (see "Typical Mounting and Rough-In Wiring" p.B1.2.)
- Electrical: Provide 120 VAC , 60 cycle, single phase, 15 amp service (in conduit) to each swing door unit on a dedicated 20 amp circuit breaker routed into header. Maximum current draw is 3.15 amps
- 2-Way Traffic: Unit to be actuated by push button or push plate on each side of unit (see "Push Button and Push Plate Switches" p.E2.4).

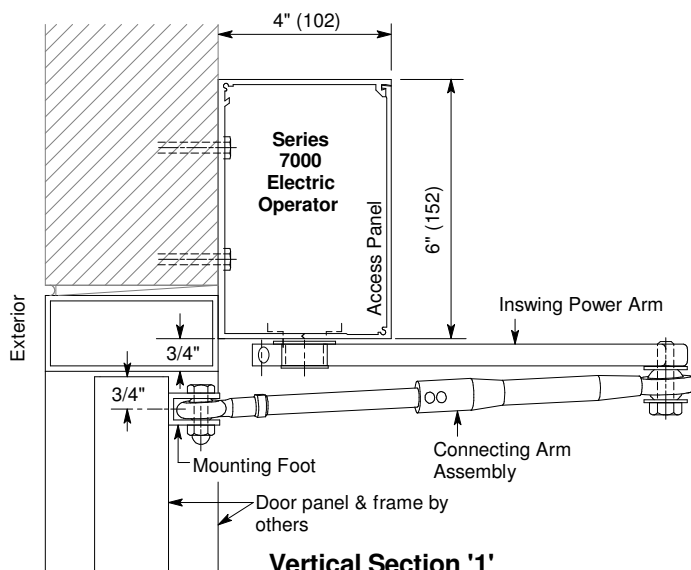
For additional equipment information see
Architectural Specifications B6.1.



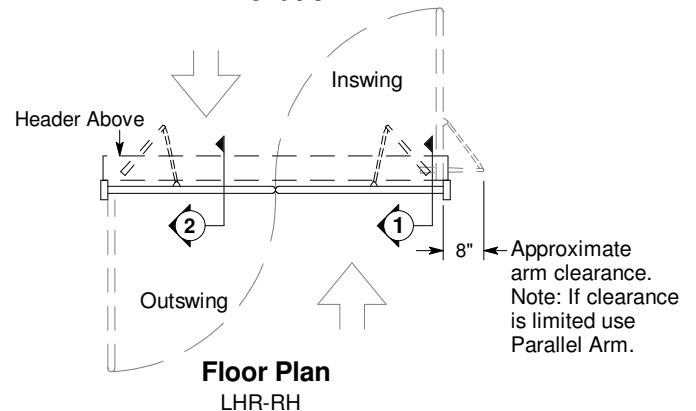
Vertical Section '2'



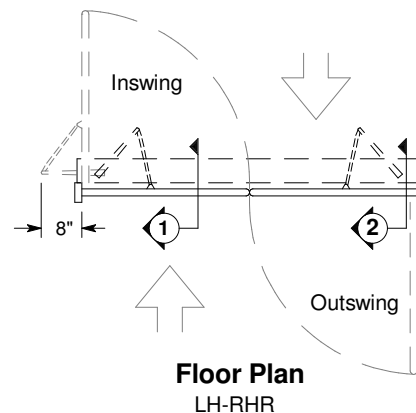
Elevation



Vertical Section '1'



**Floor Plan
LHR-RH**



**Floor Plan
LH-RHR**