



® 4242 Baldwin Boulevard
 Corpus Christi, Texas
 USA 78405-3399
 Tel: 800-531-3111, 361-888-5591
 Fax: 800-531-3108, 361-888-6510
 www.hortondoors.com
 The Automatic Choice

ARCHITECTURAL DETAILS

AUTOMATIC SWING DOORS & OPERATORS - LOW ENERGY

EasyAccess® Series 7100 Surface Applied Single & Pair with Inswing or Outswing Arm

B2.4
 July 10

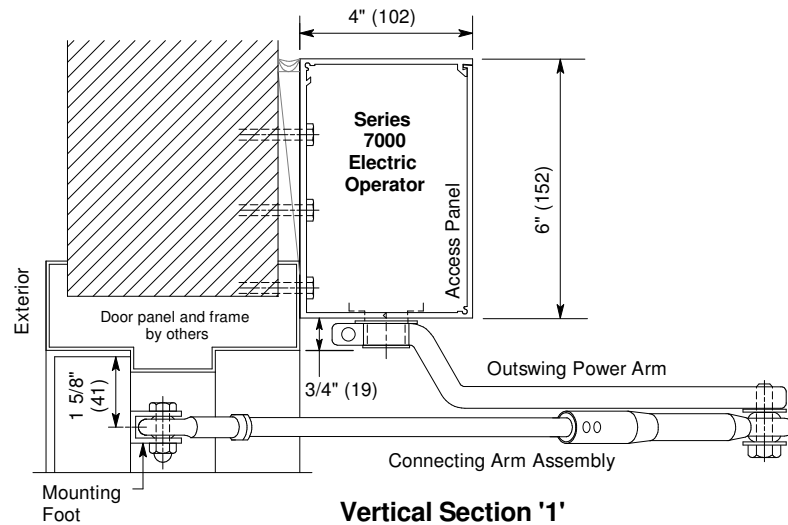
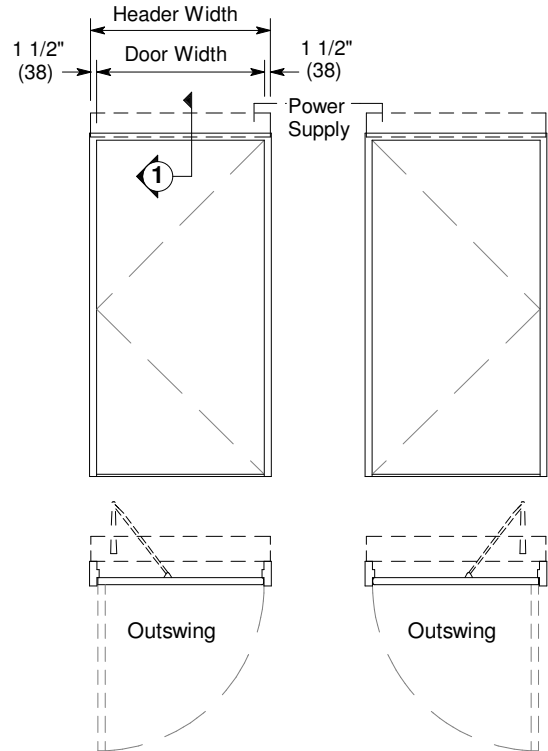
Standard Packages

Single Units		Pair Units	
Types: LH, RH, LHR, RHR		Types: LH-RH, LHR-RHR	
Door Width	Header Width	Door Pair Width	Header Width
3'-0" (914)	3'-3" (991)	5'-0" (1524)	5'-3" (1600)
3'-6" (1067)	3'-9" (1143)	6'-0" (1829)	6'-3" (1905)
		7'-0" (2133)	7'-3" (2210)
Anodized Finish: Clear or Dark Bronze			

For additional equipment information see Architectural Specs starting on p. B9.0.

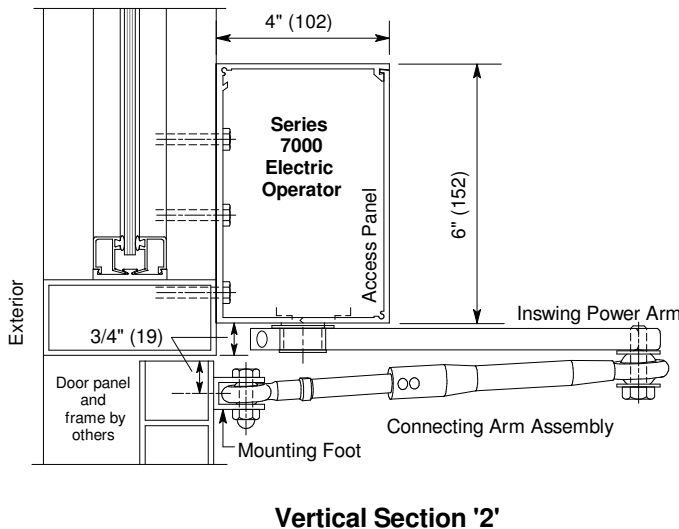
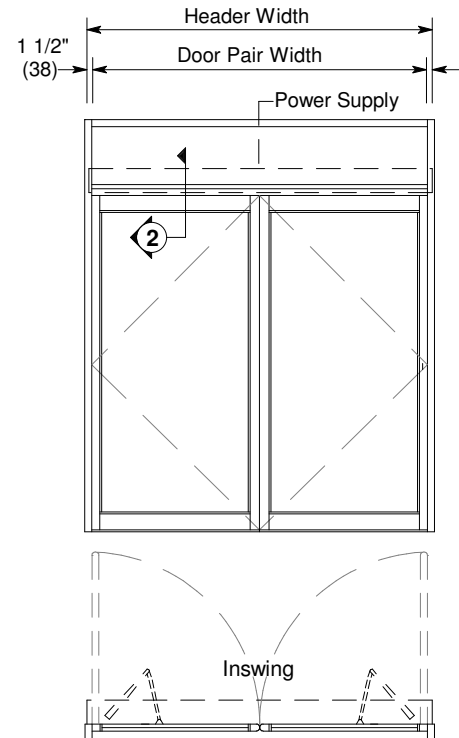
Installation and Operation

- Swing door header is surface mounted onto frame and connecting arm assembly is mounted to face of door panel. Frame and door panel to be provided by others(see p.B1.2).
- Electrical: Provide 120 VAC , 60 cycle, single phase, 15 amp service (in conduit) to each swing door unit on a dedicated 20 amp circuit breaker routed into header. Maximum current draw is 3.15 amps.
- Unit to be actuated by push plate or push button switch mounted on each side of opening for two-way traffic (see p. B1.4).



Single Units Floor Plans with Elevations

LHR & RHR shown. LH & RH are Inswing



Pair Unit Floor Plan with Elevation

LH-RH shown. LHR-RHR is Outswing