



® 4242 Baldwin Boulevard
 Corpus Christi, Texas
 USA 78405-3399
 Tel: 800-531-3111, 361-888-5591
 Fax: 800-531-3108, 361-888-6510
 www.hortondoors.com
 The Automatic Choice

ARCHITECTURAL DETAILS

SWINGING AUTOMATIC ENTRANCES

Overhead Concealed Door Packages HD-Swing® Series 4500LE Double Egress Units with Direct Drive

B11.6

July 10

Standard Packages

Door Width	Frame Opening Width	Unit Width	Rough Opening Width	Units Types:
3'-0" (914)	3'-1" (940)	6'-9 1/2" (2070)	6'-10" (2083)	LHR//RH, LH//RHR, RHR//LH, RH//LHR
3'-6" (1067)	3'-7" (1092)	7'-9 1/2" (2275)	7'-10" (2388)	
Unit Height: 7'- 6" (2286), Rough Opening Height: 7'- 6 1/4" (2292) Glazing: Standard unit prep'd for 1/4" (6) glass. Glass provided by others.				Anodized Finish: Clear or Dark Bronze

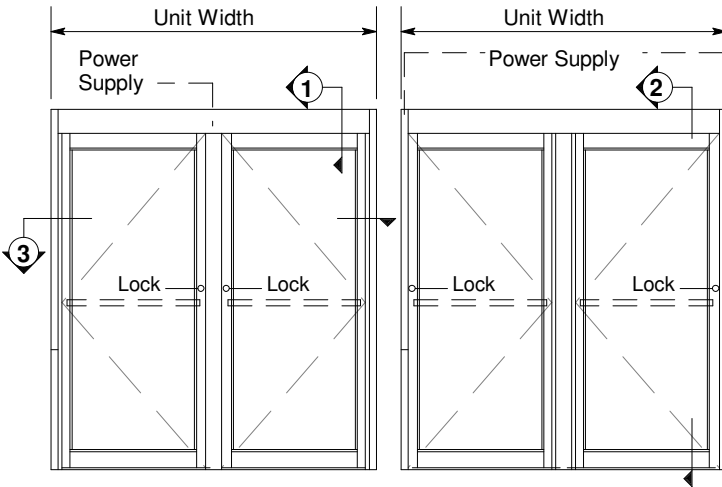
Installation and Operation

- Door is perimeter mounted within curtainwall or rough opening with 1/4" min. shim space at header & jambs. Finish floor not to exceed 1/4" out of level. (see p. B10.1)
- Electrical: Provide 120 VAC , 60 cycle, single phase, 15 amp service (in conduit) to each swing door unit on a dedicated 20 amp circuit breaker routed into header. Maximum current draw is 3.15 amps.
- Unit to be actuated by push plate or push button switch mounted on each side of opening for two-way traffic.
- Maximum Security Manual Locks: Exterior keylocks and interior thumbturns located at vertical strike rail.

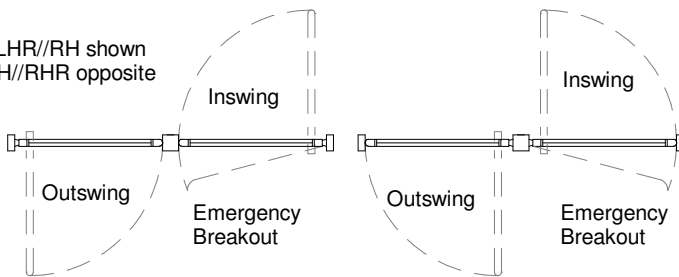
Options

- 2 1/4" wide muntin bar in lieu of pushbar.
- Additional muntins and/or push bars.
- Transom & sidelites.
- Non-threshold application.
- Custom glass prep up to 1".
- Custom muntins from 1/2" to 10" wide.
- Custom bottom rails up to 10" tall.
- Custom jambs: 1 3/4" x 6" or 1 3/4" x 4 1/2".
- Custom anodized or paint finish.

For standard and optional equipment details see Architectural Specs starting on p. B9.0 and B10.0 and Specification Details starting on p. B3.0.

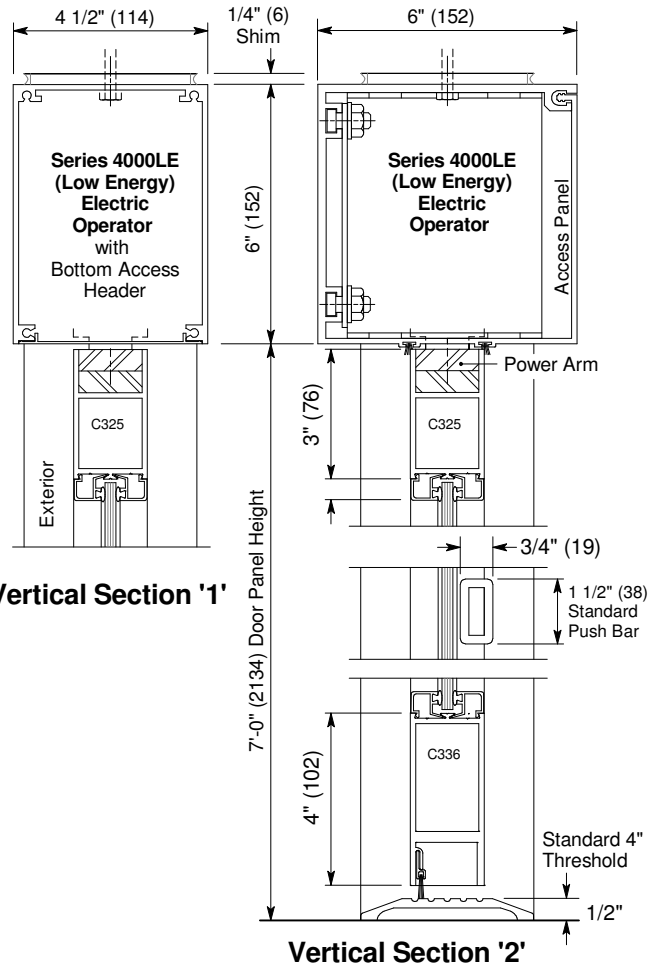


LHR//RH shown
LH//RHR opposite



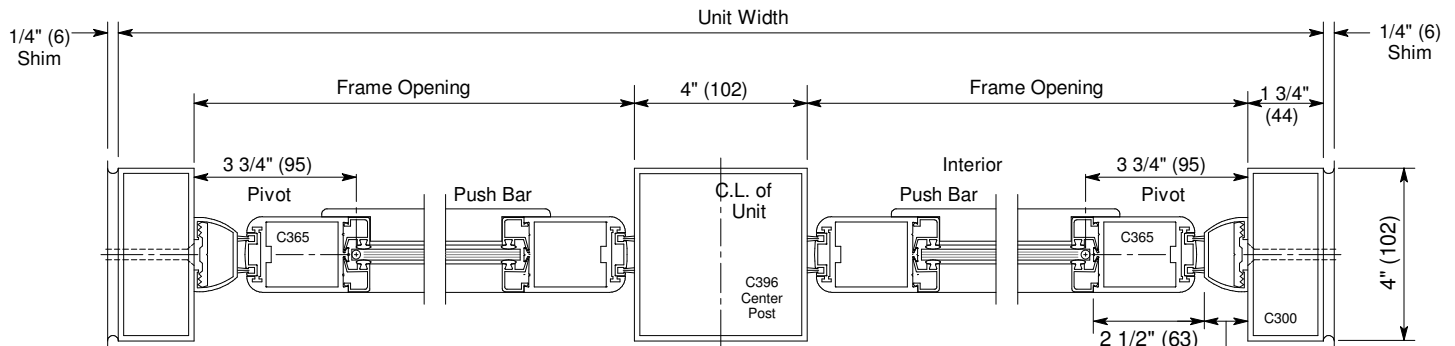
RHR//LH shown
RH//LHR opposite

Exterior Elevations and Floor Plans



Vertical Section '1'

Vertical Section '2'



Horizontal Section '3'