

Standard Packages

Unit Width	Fold Opening	Breakout Opening	Fold Reach	Breakout Reach	Rough Opening Width
6'-0" (1829)	4'-4" (1343)	4'-11" (1505)	1'-0" (305)	2'-4 1/2" (730)	6'-0 1/2" (1841)
6'-5 1/2" (1968)	4'-10" (1482)	5'-4" (1645)	1'-2" (356)	2'-7 1/4" (794)	6'-6" (1981)
7'-0" (2134)	5'-4" (1648)	5'-11" (1810)	1'-3" (381)	2'-10 1/2" (876)	7'-0 1/2" (2146)
8'-0" (2428)	6'-4" (1953)	6'-11" (2115)	1'-6" (457)	3'-4 1/2" (1029)	8'-0 1/2" (2451)

Unit Height: 7'-6" (2286), **Rough Opening Height:** 7'-6 1/4" (2292)

Glazing: Standard unit prep'd for 1/4" (6) glass. Glass provided by others.

Anodized Finish: Clear or Dark Bronze

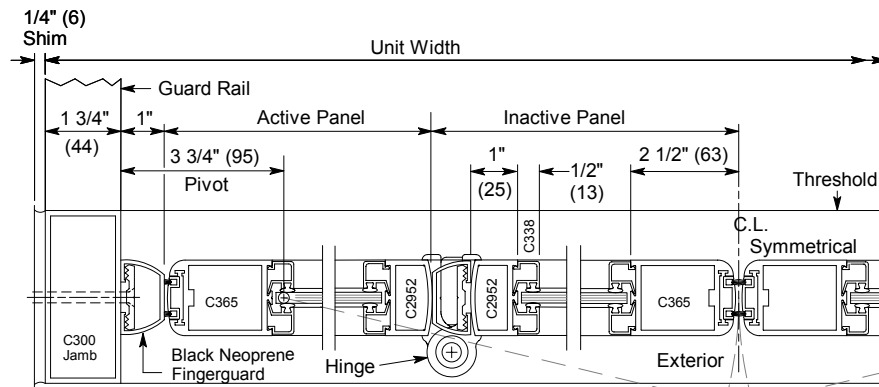
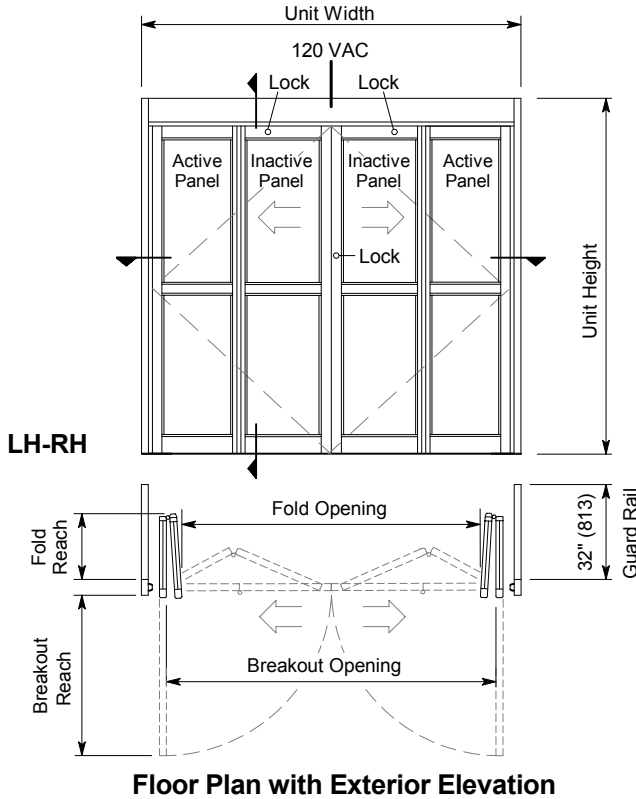
Options

- Custom unit width between 6'-0" & 8'-0".
- Custom panel height up to 8'-0".
- Additional muntins and/or push bars.
- Transom & sidelites.
- 1/2" tall threshold.
- Custom muntins from 1/2" to 10" wide.
- Custom bottom rails up to 10" tall.
- Custom jambs: 1 3/4" x 4 1/2" or 1 3/4" x 6".
- Custom anodized or paint finish.

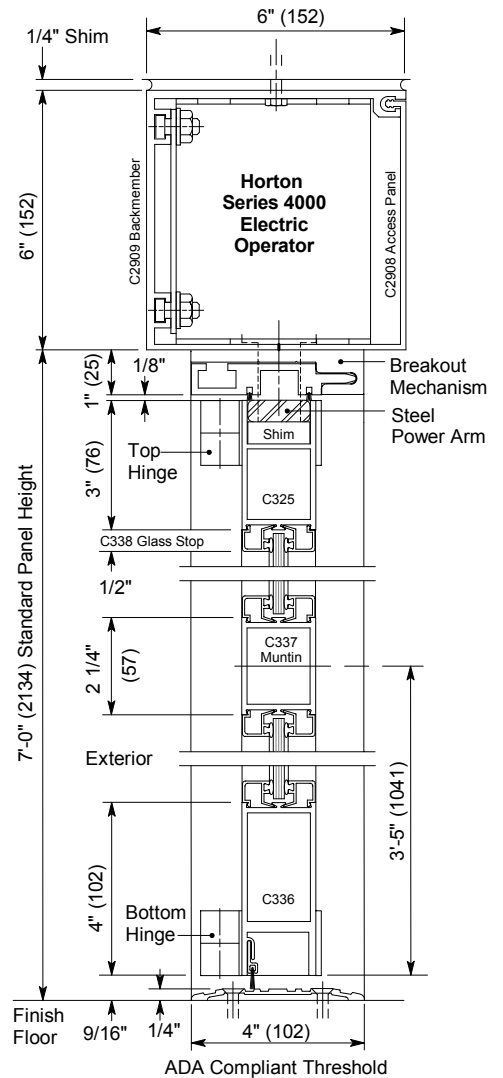
For standard and optional equipment details see Arch. Specs starting on p. B16.0 and Specification Details starting on p. B15.0. Consult factory for optional glazing prep. (65 lbs. max. per panel).

Installation and Operation

- Door is perimeter mounted within curtainwall or rough opening with 1/4" min. shim space at header & jambs. Finish floor not to exceed 1/4" out of level. (see p. B13.1)
- Electrical: Provide 120 VAC, 60 cycle, single phase, 15 amp service (in conduit) to each folding door unit on a dedicated 20 amp circuit breaker routed into header. Maximum current draw is 3.15 amps.
- Vista™ Sensor System for folding doors (for 2-way traffic) includes header mounted motion sensors & swing-side safety sensor (see p. B13.2). After time-delay, door closes using spring force of less than 15 lbs.
- Emergency Egress: Panel can break out 90° from any position of travel requiring no more than 50 lbf. (222N) of force applied to lock stile. Power shuts off in break-out mode.
- Maximum Security Manual Locks: Exterior keylocks and interior thumbturns located at right-hand vertical strike rail and at top of each inactive panel (see p. B15.2). Lock at strike rail has drop bolt into threshold.



Horizontal Section



Vertical Section
 Door shown in closed position