



® 4242 Baldwin Boulevard
 Corpus Christi, Texas
 USA 78405-3399
 Tel: 800-531-3111, 361-888-5591
 Fax: 800-531-3108, 361-888-6510
 www.hortondoors.com
 The Automatic Choice

ARCHITECTURAL DETAILS

INDUSTRIAL SLIDE DOORS

HD-Slide® Industrial with Flush Steel Panel

C2.2

Type: Single Slide P-X or X-P

Apr 17

Standard Packages

Wall / Slide Opening	Slide Panel Width	Unit Width
3'-0" (914)	3'- 2 1/2" (978)	6'-8 1/2" (2134)
4'-0" (1219)	4'- 2 1/2" (1283)	8'-8 1/2" (2654)
5'-0" (1524)	5'- 2 1/2" (1588)	10'-8 1/2" (2654)
6'-0" (1829)	6'- 2 1/2" (1892)	12'-8 1/2" (3874)
7'-0" (2137)	7'- 2 1/2" (2197)	14'-8 1/2" (4483)
8'-0" (2438)	8'- 2 1/2" (2502)	16'-8 1/2" (5093)
9'-0" (2743)	9'- 2 1/2" (2807)	18'-8 1/2" (5702)
10'-0" (3048)	10'-2 1/2" (3111)	20'-8 1/2" (6312)

Unit Height: 7'-8" (2337)
Panel Finish : Galvanized Steel.
Exposed Aluminum Finish : 204R1 Clear anodized.

Installation and Operation

- Door unit is surface mounted onto exterior of finished wall. Finish floor not to exceed 1/4" out of level.
- Electrical: Provide 120 VAC, 60 cycle, single phase, 15 amp service (in conduit) to each unit on dedicated 20 amp circuit breaker routed to header. Maximum current draw is 3.15 amps.
- Actuator mounted on interior and exterior of opening for operation in each direction. Door opens flush to wall opening. Door closes after time delay expires.

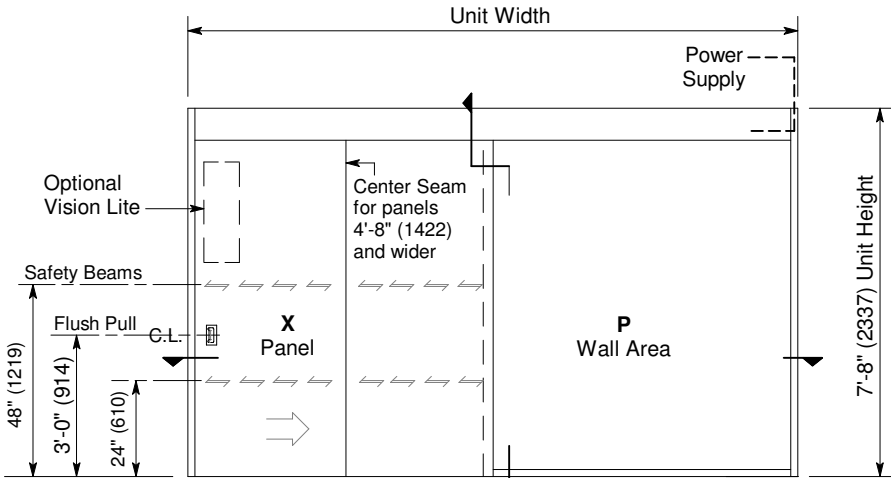
Actuators:

- Push Plate or overhead Motion Sensor

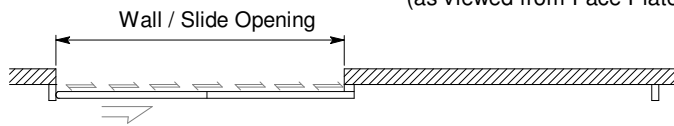
See Architectural Specs. starting on p. C5.0.

Options:

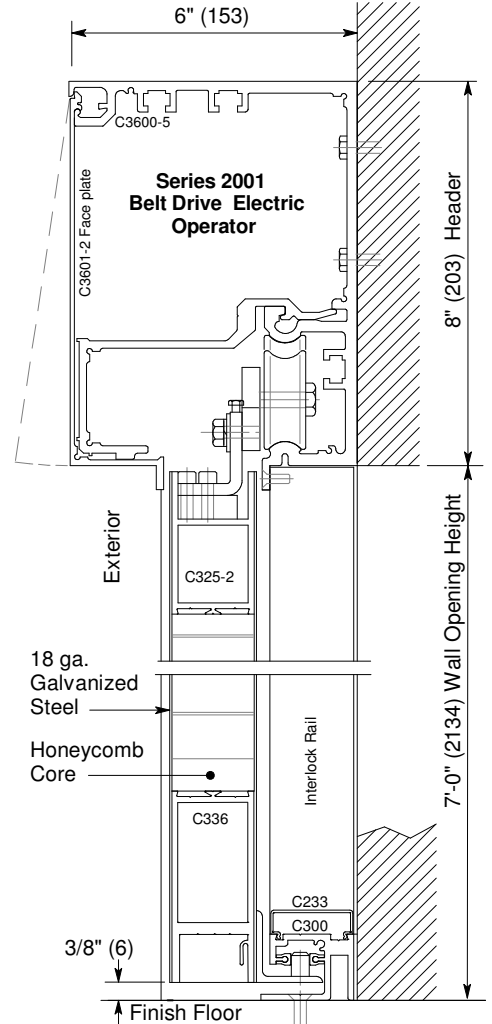
- Stainless steel or anodized aluminum hood (p.C3.0)
- Stainless or painted steel panel
- Vision Lite: 10"- 24" square or rectangular (p.C3.0)
- Manual lock or Autolock (Fail-Safe or Fail-Secure)
- Power-Fail-Open or Power-Fail-Close
- UPS Battery Back-up
- Custom height & width
- 1/4 HP Motor (in lieu of Std.1/8 HP)



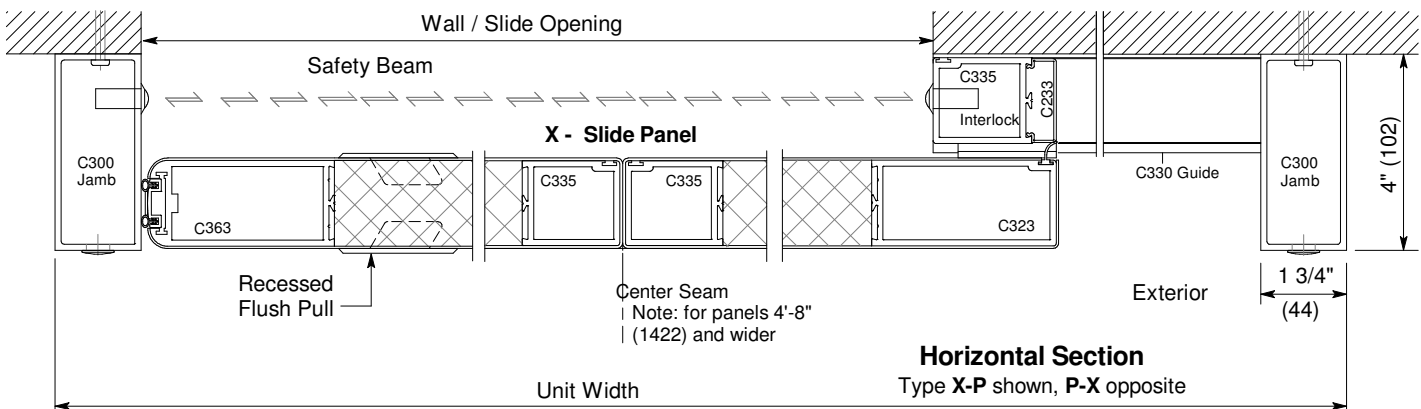
Type X-P shown, P-X opposite (as viewed from Face Plate Side)



Exterior Elevation and Floor Plan



Vertical Section
 Door shown in open position



Horizontal Section
 Type X-P shown, P-X opposite