

### Standard Packages

Wall / Slide Opening	Slide Panel Width	Unit Width
5'-0" (1524)	2'-8 1/2" (826)	11'- 4" (3454)
6'-0" (1829)	3'-2 1/2" (978)	13'- 4" (4064)
7'-0" (2137)	3'-8 1/2" (1130)	15'- 4" (4483)
8'-0" (2438)	4'-2 1/2" (1283)	17'- 4" (5283)
9'-0" (2743)	4'-8 1/2" (1435)	19'- 4" (5893)
10'-0" (3048)	5'-2 1/2" (1588)*	21'- 4" (6502)
11'-0" (3048)	5'-8 1/2" (1740)*	23'- 4" (7112)
12'-0" (3048)	6'-2 1/2" (1892)*	25'- 4" (7722)

\* Panels 4'-8" (1422) and wider will have Center Seam.  
**Unit Height:** 7'-8" (2337)  
**Panel Finish :** Galvanized Steel.  
**Exposed Aluminum Finish :** 204R1 Clear anodized.

### Installation and Operation

- Door unit is surface mounted onto exterior of finished wall. Finish floor not to exceed 1/4" out of level.
- Electrical: Provide 120 VAC, 60 cycle, single phase, 15 amp service (in conduit) to each unit on dedicated 20 amp circuit breaker routed to header. Maximum current draw is 3.15 amps.
- Actuator mounted on interior & exterior of opening for operation in each direction. Door opens flush to wall opening. Door closes after time delay expires.

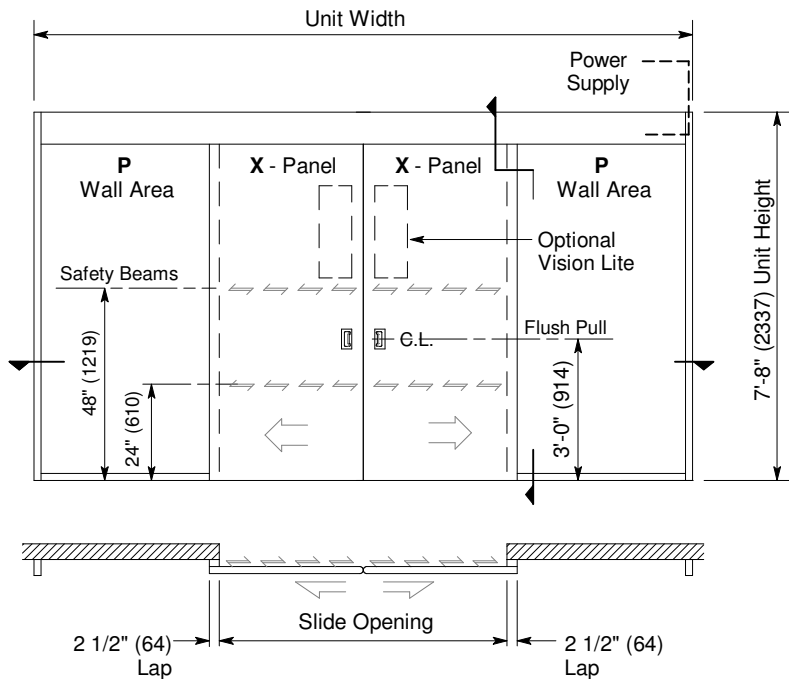
### Actuators:

- Push Plate or overhead Motion Sensor

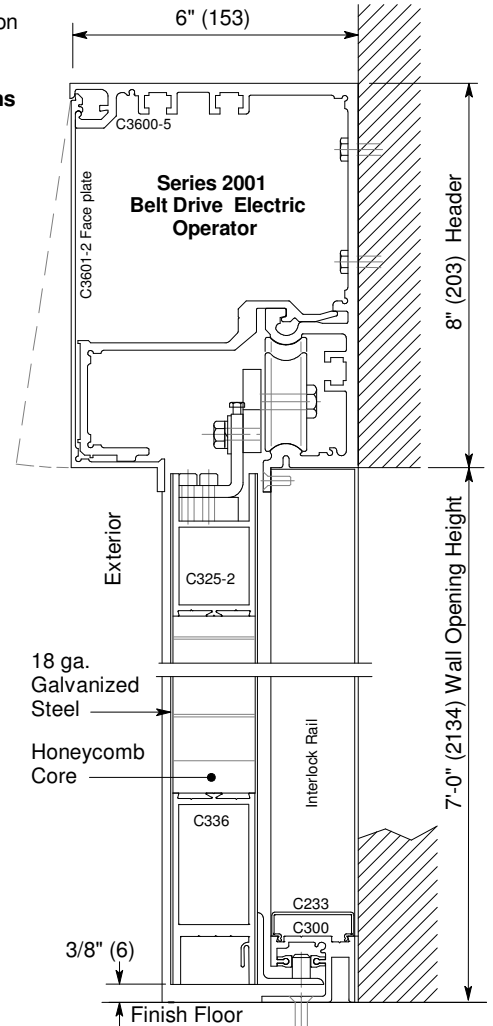
See Architectural Specifications starting on p. C5.0.

### Options:

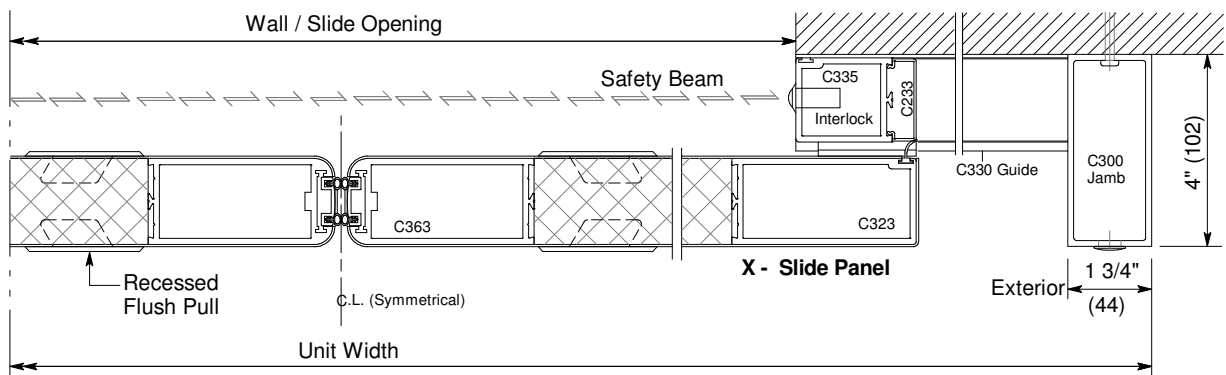
- Stainless steel or anodized aluminum hood (p.C3.0)
- Stainless or painted steel panel
- Vision Lite: 10"- 36" square or rectangular (p.C3.0)
- Manual lock or Autolock (Fail-Safe or Fail-Secure)
- Power-Fail-Open or Power-Fail-Close
- UPS Battery Back-up
- Custom height & width
- 1/4 HP Motor ( in lieu of Std.1/8 HP)



Exterior Elevation and Floor Plan



Vertical Section  
Door shown in open position



Horizontal Section