



® 4242 Baldwin Boulevard  
 Corpus Christi, Texas  
 USA 78405-3399  
 Tel: 800-531-3111, 361-888-5591  
 Fax: 800-531-3108, 361-888-6510  
 www.hortondoors.com  
 The Automatic Choice

# ARCHITECTURAL DETAILS

## CLEANROOM SLIDE DOORS

### UltraClean™ Atmospheric II

Type: 010 Single Slide X-P or P-X, Surface Applied

C7.5

Dec 16

### Standard Packages

Unit Width	Slide Opening	Wall Opening	Slide Panel Width
7'-0" (2134)	3'-0" (914)	3'-3 1/2" (1003)	3'-6" (1067)
8'-0" (2438)	3'-6" (1067)	3'-9 1/2" (1156)	4'-0" (1219)
8'-6" (2591)	3'-9" (1143)	4'-0 1/2" (1232)	4'-3" (1295)
9'-0" (2743)	4'-0" (1219)	4'-3 1/2" (1308)	4'-6" (1372)

<b>Unit Height:</b> 7'-6" (2286)	<b>Finishes:</b> Anodized Aluminum, Custom Paint, #4 Stainless Clad
<b>Glazing:</b> Standard unit prep'd for 1/4" (6) glazing using beveled glass stops on all horizontal rails.	

### Compliant with ISO Class 5 Cleanroom

- Applications for Cleanroom Air Shower, Sterile Environment, Pharmaceutical or Healthcare Lab, Manufacturing Processing

#### Actuators:

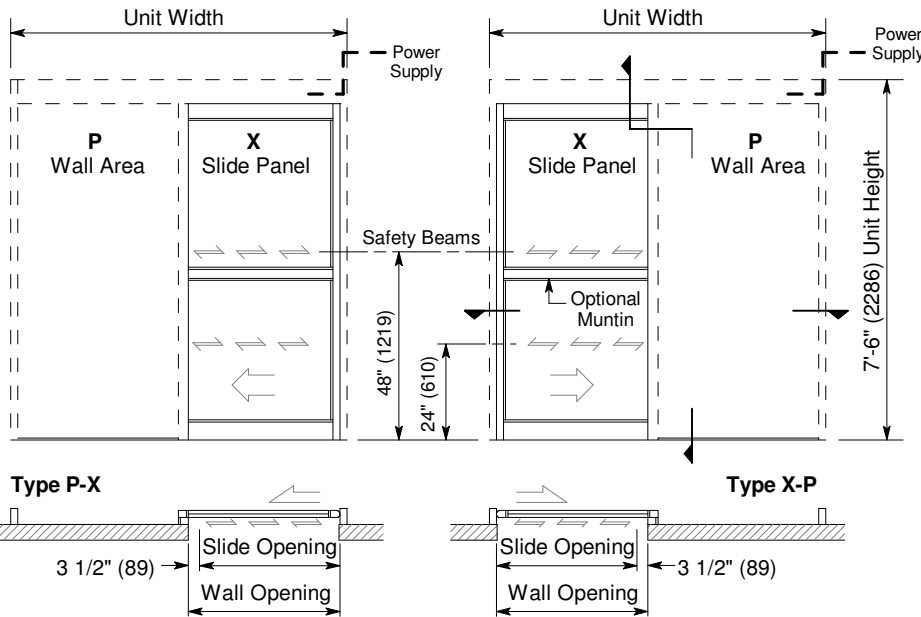
- Push Plate, Wave Sensor or overhead Motion Sensor

#### Options:

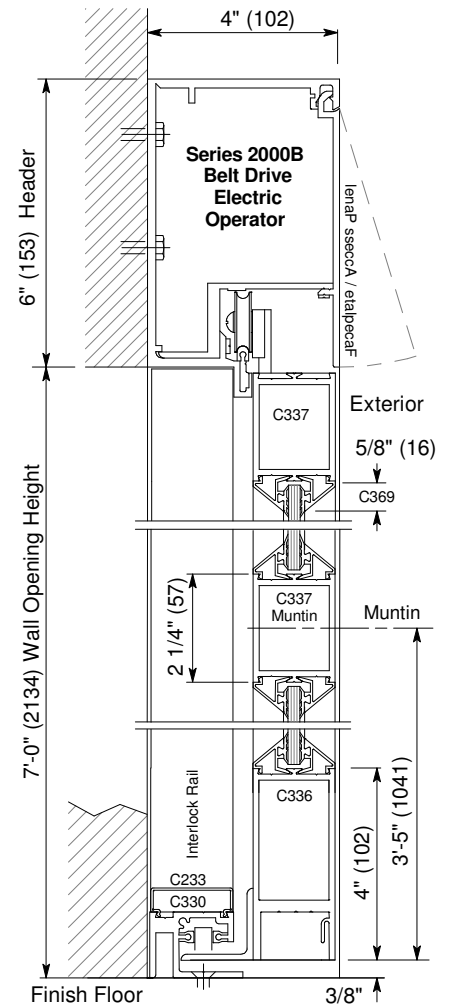
- Custom height & width
- Medium or wide stile construction
- Stainless steel or anodized aluminum hood (p.C8.0)
- Manual lock, Autolock, or Interlock Controller

### Installation and Operation

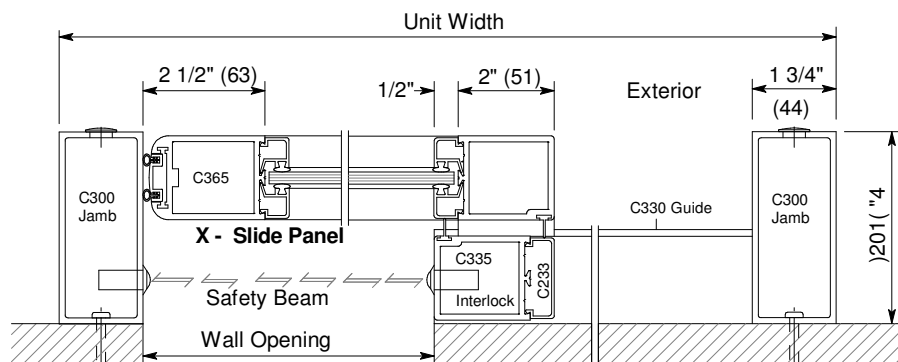
- Door unit is surface mounted onto exterior of finished wall. Finish floor not to exceed 1/4" out of level. (See page C6.2)
- Electrical: Provide 120 VAC, 60 cycle, single phase, 15 amp service (in conduit) to each unit on dedicated 20 amp circuit breaker routed to header. Maximum current draw is 3.15 amps.
- Actuator mounted on interior and exterior of opening for operation in each direction. Door closes after time delay expires. Optional interlock Control prevents two doors from being open at the same time in multiple door application.
- Finger Safety: Upon activation, sliding panel will stop 3 1/2" (89) short of interlock rail. Result is slide opening.



Exterior Elevation and Floor Plan



Vertical Section  
 Door shown in open position



Horizontal Section

Type X-P shown, P-X opposite

Horton Automatics reserves the right to alter its product and specifications without notice. Dimensions given in U.S. inches followed by millimeters in parenthesis.