

### Standard Packages

Unit Width	Slide Opening	Slide / Swing Panel Width	Fixed Sidelite Width	Rough Opening Width
7'-0" (2134)	3'-0" (914)	3'- 2 1/2" (978)	3'-8 1/2" (1130)	7'-0 1/2" (2146)
8'-0" (2438)	3'-6" (1067)	3'- 8 1/2" (1130)	4'-2 1/2" (1282)	8'-0 1/2" (2451)
8'-6" (2591)	3'-9" (1143)	3'-11 1/2" (1207)	4'-5 1/2" (1359)	8'-6 1/2" (2604)
9'-0" (2743)	4'-0" (1219)	4'- 2 1/2" (1283)	4'-8 1/2" (1435)	9'-0 1/2" (2756)

<b>Unit Height:</b> 7'-8" (2337)	<b>Finish :</b> #4 Brushed Stainless Steel Cladding
<b>Rough Opening Height:</b> 7'-8 1/4" (2343)	

### Applications:

- Pharmaceutical or Food Processing/Manufacturing Cleanroom, Biohazard Containment Facility - Washdown Area

### Actuators:

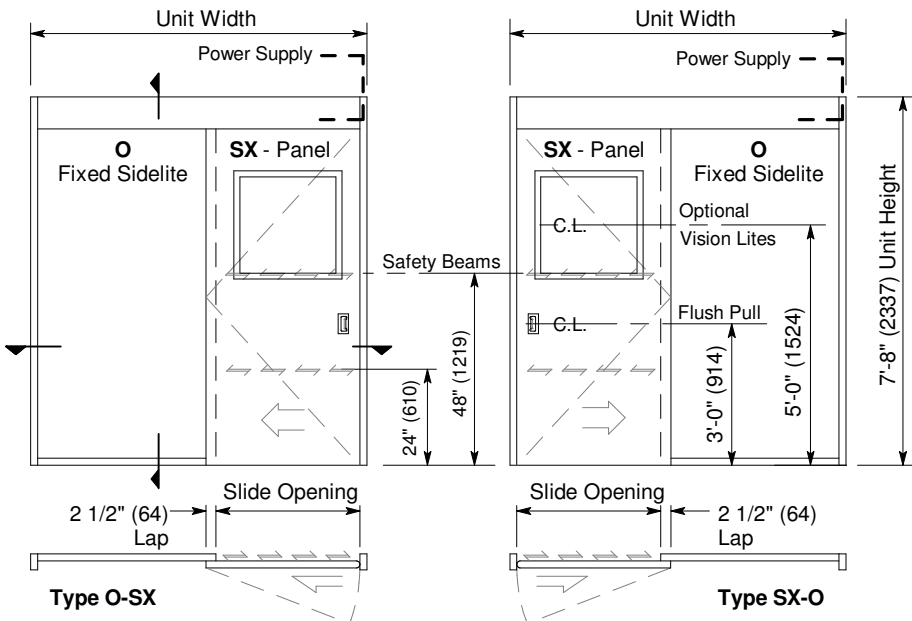
- Push Plate, Pull Chain or overhead Motion Sensor

### Options:

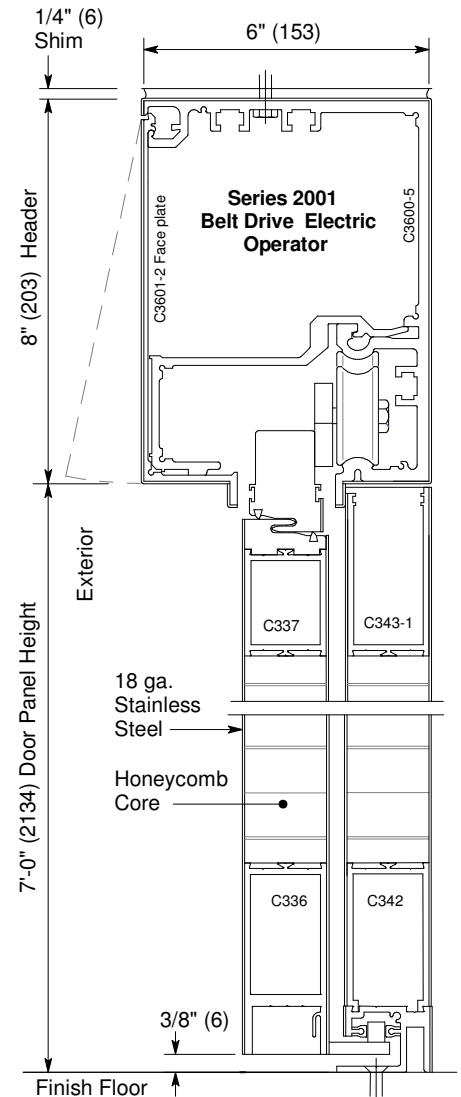
- Vision Lite: 10" (254) square or 24" (610) square (p.C8.0)
- Custom height & width
- Stainless steel or anodized aluminum hood (p.C8.0)
- Manual lock, Autolock, or Interlock Controller

### Installation and Operation

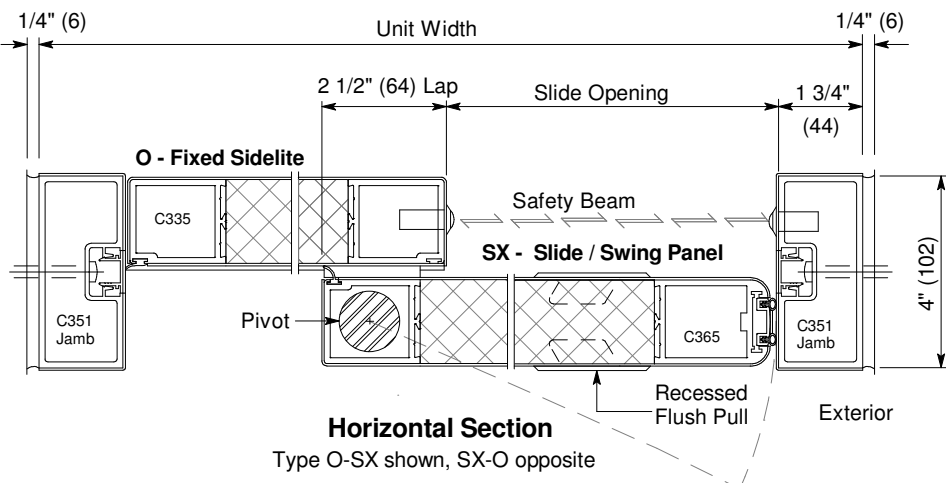
- Door perimeter mounted within rough opening with 1/4" minimum shim space at header & jambs. Finish floor not to exceed 1/4" out of level. (See page C6.2)
- Electrical: Provide 120 VAC, 60 cycle, single phase, 15 amp service (in conduit) to each unit on dedicated 20 amp circuit breaker routed to header. Maximum current draw is 3.15 amps.
- Actuator mounted on interior and exterior of opening for operation in each direction. Door closes after time delay expires. Optional interlock Control prevents two doors from being open at the same time in multiple door application.
- SX Slide/Swing Panel can swing out at any point of slide travel requiring no more than 50 lbs of force applied at the strike stile.



Exterior Elevations and Floor Plans



Vertical Section  
Door shown in open position



Horizontal Section

Type O-SX shown, SX-O opposite