



® 4242 Baldwin Boulevard  
 Corpus Christi, Texas  
 USA 78405-3399  
 Tel: 800-531-3111, 361-888-5591  
 Fax: 800-531-3108, 361-888-6510  
 www.hortondoors.com  
 The Automatic Choice

# ARCHITECTURAL DETAILS

## REVOLVING DOOR ENTRANCES

Grand® Automatic Series 9631

Type: 3-Wing with Segmented® Drum (page 1 of 3)

F2.12

Oct 17

### Standard Packages

Nominal Outside Diameter	Inside Diameter	Entry	Clear Access at Door Wing	Rough Opening Width x Height
12'-0" (3658)	11'-8 1/2" (3569)	5'-3 3/4" (1619)	3'-0 1/4" (921)	12'-0 1/2" (3670) x 9'-0 1/4" (2750)
14'-0" (4267)	13'-8 1/2" (4173)	6'-3 3/4" (1924)	4'-0 1/4" (1226)	14'-0 1/2" (4280) x 9'-0 1/4" (2750)
16'-0" (4877)	15'-8 1/2" (4788)	7'-3 3/4" (2229)	5'-0 1/4" (1530)	16'-0 1/2" (4890) x 9'-0 1/4" (2750)

**Overall Unit Height:** 9'-0" (2438), **Ceiling Height:** 7'-0" (2134), **Canopy Height:** 24" (610)  
**Glazing:** Standard unit prep'd for 1/4" (6) glass. Glass provided by others.

**Anodized Finish:**  
 Clear or Dark Bronze

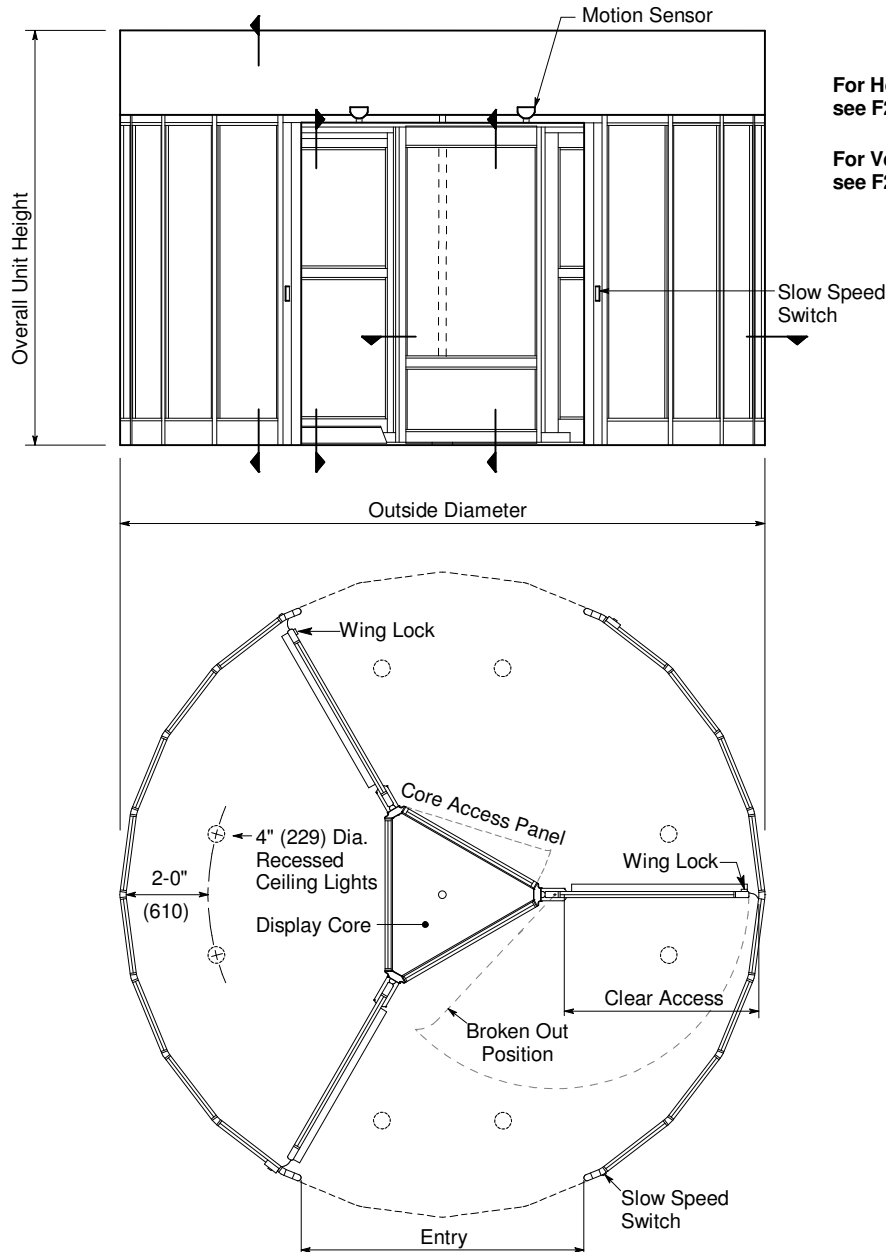
### Options

- Custom ceiling height up to 8'-0"
- Extended or cropped canopy
- Aluminum roof
- Custom anodized or paint finish
- One-Way Security with Mats

For more standards & options see Architectural Specs (p.F7.1) and Spec Details (p. F3.0).

### Installation and Operation

- Door unit is surface mounted to finish floor (floor not to exceed 1/4" out of level). Unit is free-standing with no additional support required.
- Drum can be center connected to adjacent construction or throat connected (at entry vertical rails). Allow 1/4" shim space each side & at canopy. Adjacent construction not to bear down on revolving door.
- Motion sensors at each entry starts wing rotation on user approach at 3-5 RPM. Push plates mounted at each side of entry slow door to 1-3 RPM for slower traffic.
- Electrical: Provide 120 VAC, 15 amp service on a dedicated 20 amp circuit breaker routed to power operator mounted within the enclosure canopy.



For Horizontal Sections see F2.13 (page 2 of 3).

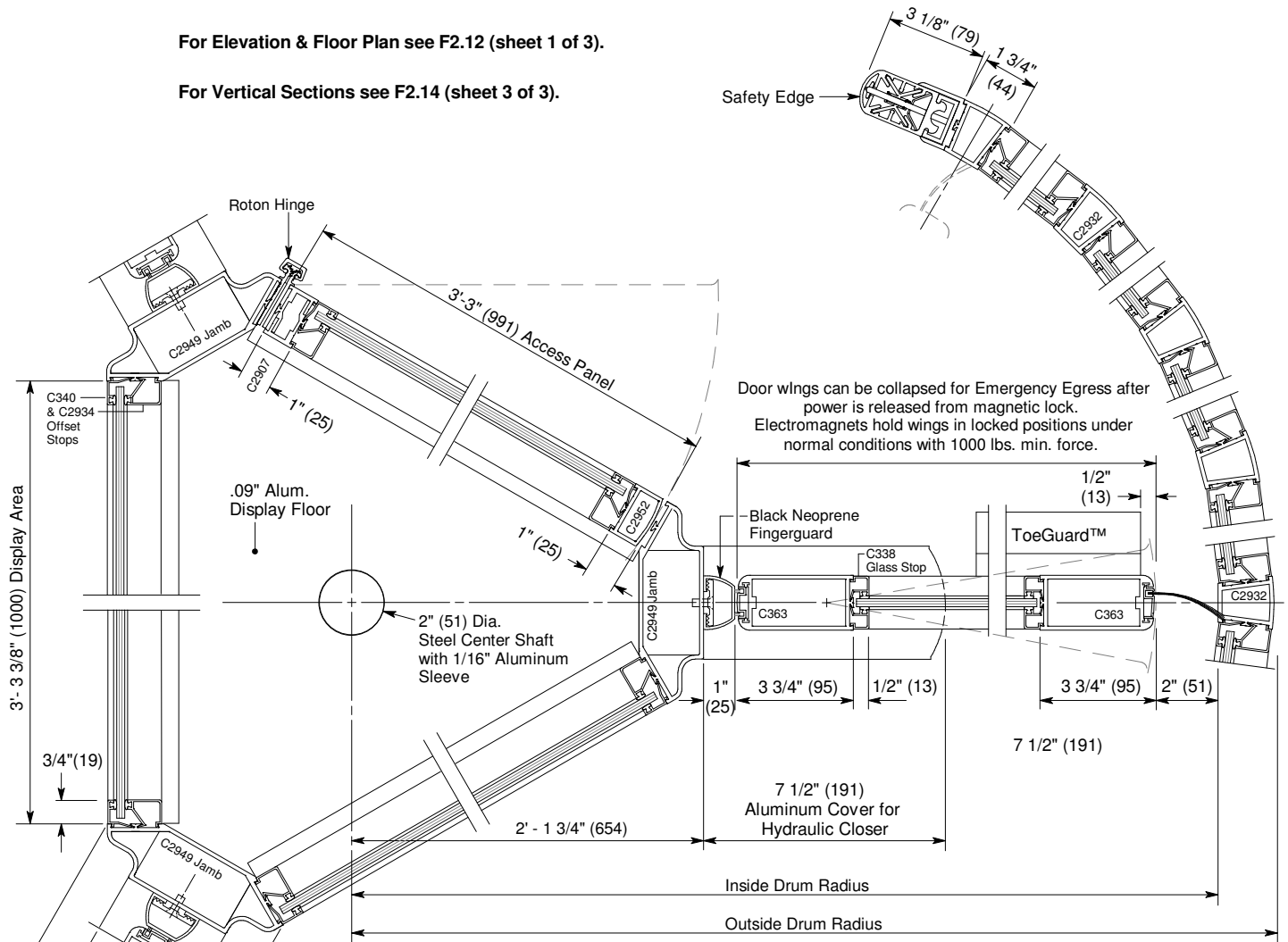
For Vertical Sections see F2.14 (page 3 of 3).

Floor Plan and Exterior Elevation

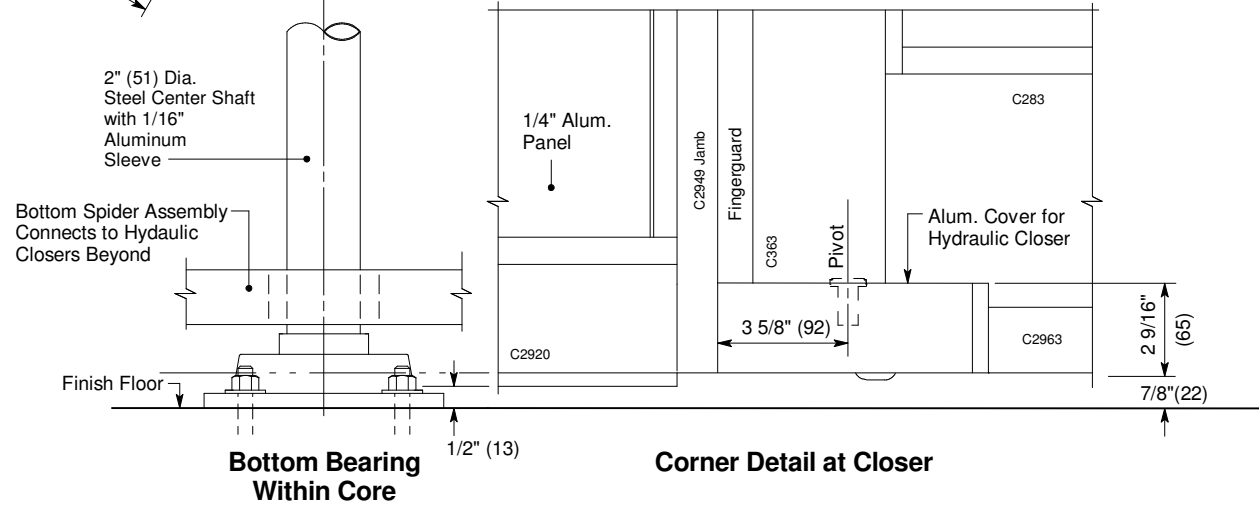
Horton Automatics reserves the right to alter its product and specifications without notice. Dimensions given in U.S. inches followed by millimeters in parenthesis.

For Elevation & Floor Plan see F2.12 (sheet 1 of 3).

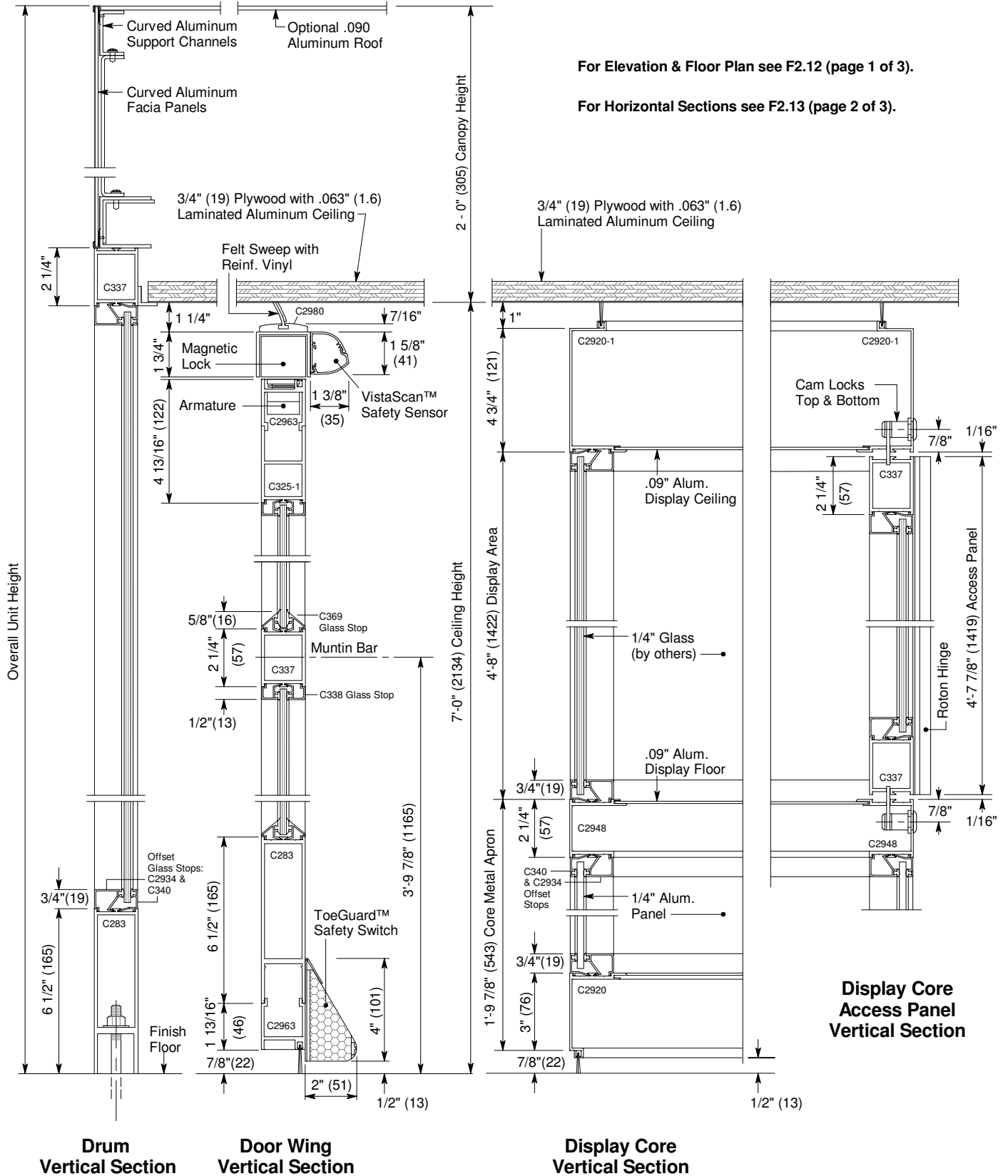
For Vertical Sections see F2.14 (sheet 3 of 3).



**Display Core, Door Wing and Drum - Horizontal Section**



Horton Automatics reserves the right to alter its product and specifications without notice. Dimensions given in U.S. inches followed by millimeters in parenthesis.



Horton Automatics reserves the right to alter its product and specifications without notice. Dimensions given in U.S. inches followed by millimeters in parenthesis.