

Standard Packages

Nominal Inside Diameter	Outside Drum Diameter	Canopy Diameter	Entry	Rough Opening Width (at Canopy)	Rough Opening Height
6'-6" (1981)	6'-9 1/2" (2070)	6'-10" (2083)	3'-0 1/8" (918)	6'-10 1/2" (2096)	7'-10 1/4" (2394)
7'-0" (2134)	7'-3 1/2" (2223)	7' - 4" (2235)	3'-3 1/8" (994)	7' - 4 1/2" (2248)	7'-10 1/4" (2394)

Unit Height: 7'-10" (2388)
Ceiling Height: 7'-0" (2134)
Canopy Height: 10" (254)

Glazing: Door wings prep'd for 1/4" (6) glass (glass by others). Drum provided with 7/16" (11) clear laminated glass.

Anodized Finish: Clear or Dark Bronze

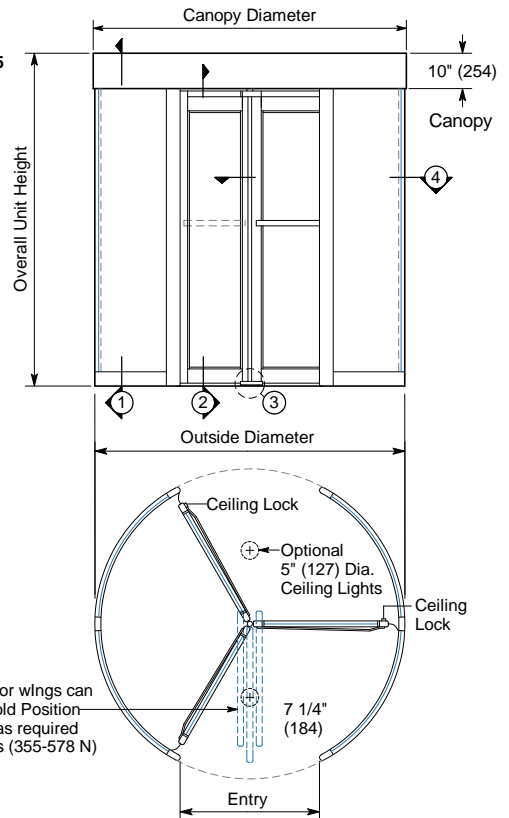
See Architectural Specifications F9.1-5 for further standard & optional product information.

Options

- Magnetic Breakaway
- Custom Diameters between 6'-6" & 7'-0"
- Aluminum Roof
- Card Reader Bracket
- Custom Ceiling Height up to 9'-0"
- Extended or Cropped Canopy
- Night Lock (Consult Factory)
- Ceiling Lights or Partial Glass Ceiling
- Muntin or Round Push Bars
- Entrapment Help Switches
- Custom Glazing Prep up to 1"
- Custom anodized or paint finish

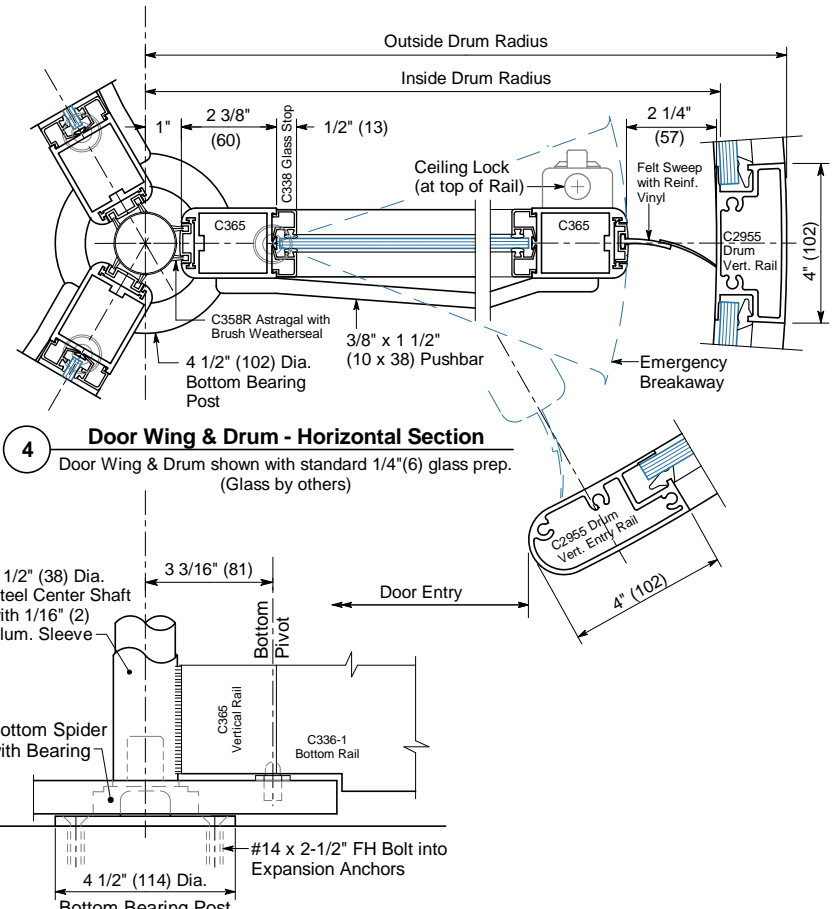
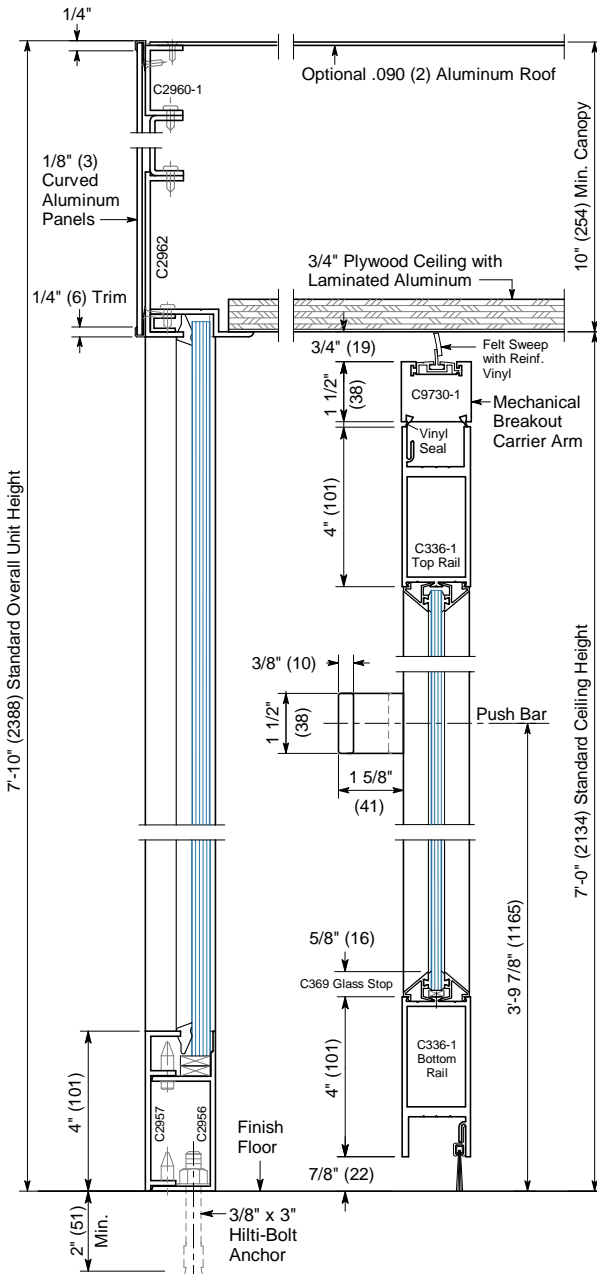
Installation and Operation

- **Floor Attachment:** Surface mounted to finish floor (floor not to exceed 1/4" out of level). Unit is free-standing with no additional support required.
- **Adjacent Construction Interface:** Center connected or 'throat connected' (at entry vertical rails). Allow for 1/4" shim space each side and at canopy. Adjacent construction not to bear down on revolving door.
- **Electrical:** 120 VAC, 60 cycle, single phase, 20 amp service in conduit.
- **Overhead Electronic Speed Control:** Allows up to 12 RPM (ANSI 156.27) and provides smooth braking action.
- **Automatic Home Positioning -** Wing rotation continues after pedestrian passes through door. Rotation stops at optimal position.



Emergency Egress: Door wings can be collapsed into Bookfold Position for Emergency Egress, as required by Code, with 80-130 lbs (355-578 N) of force (adjustable).

Floor Plan and Exterior Elevation



1 Drum Vertical Section

2 Door Wing Vertical Section

3 Center Shaft Base Elevation