



® 4242 Baldwin Boulevard
 Corpus Christi, Texas
 USA 78405-3399
 Tel: 800-531-3111, 361-888-5591
 Fax: 800-531-3108, 361-888-6510
 www.hortondoors.com
 The Automatic Choice

ARCHITECTURAL DETAILS

SECURITY REVOLVING DOOR ENTRANCES

ControlFlow® 1-Way Security Series 9131

F9.0

Type: 3-Wing with Segmented® Drum & Round Canopy

Nov 17

Standard Packages

Nominal Inside Diameter	Outside Diameter	Entry	Rough Opening Width x Height
8'-0" (2438)	8'-3 1/2" (2527)	3'-4 3/8" (1026)	8'-4" (2540) x 8'-0 1/4" (2445)
9'-0" (2743)	9'-3 1/2" (2832)	3'-10 3/8" (1178)	9'-4" (2845) x 8'-0 1/4" (2445)
10'-0" (3048)	10'-3 1/2" (3137)	4'-4 3/8" (1330)	10'-4" (3150) x 8'-0 1/4" (2445)

Overall Unit Height: 8'-0" (2438)
Ceiling Height: 7'-0" (2134), **Canopy Height:** 12" (305)
Glazing: Standard unit prep'd for 1/4" (6) glass. Glass by others.

Anodized Finish:
 Clear or Dark Bronze

- Options** ● Ceiling lights ● Custom anodized or paint finish ● Ceiling height up to 8'-0"
 ● Aluminum roof ● Extended or cropped canopy ● Inactive mats (non-secure areas)

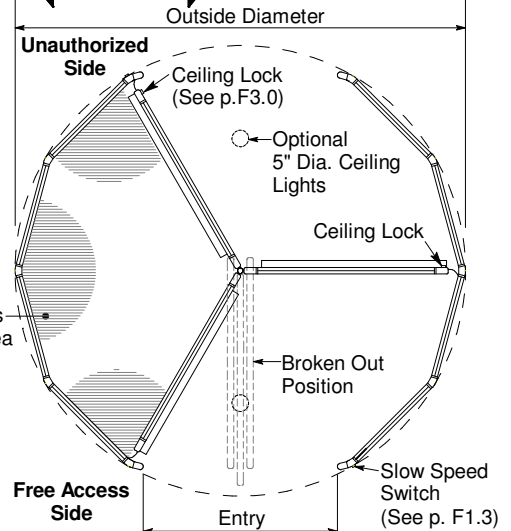
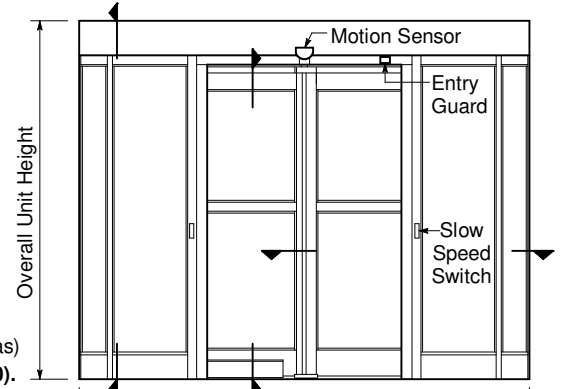
For more standards & options see Arch. Specs (p. F10.1) and Spec Details (starting on p. F3.0).

Installation

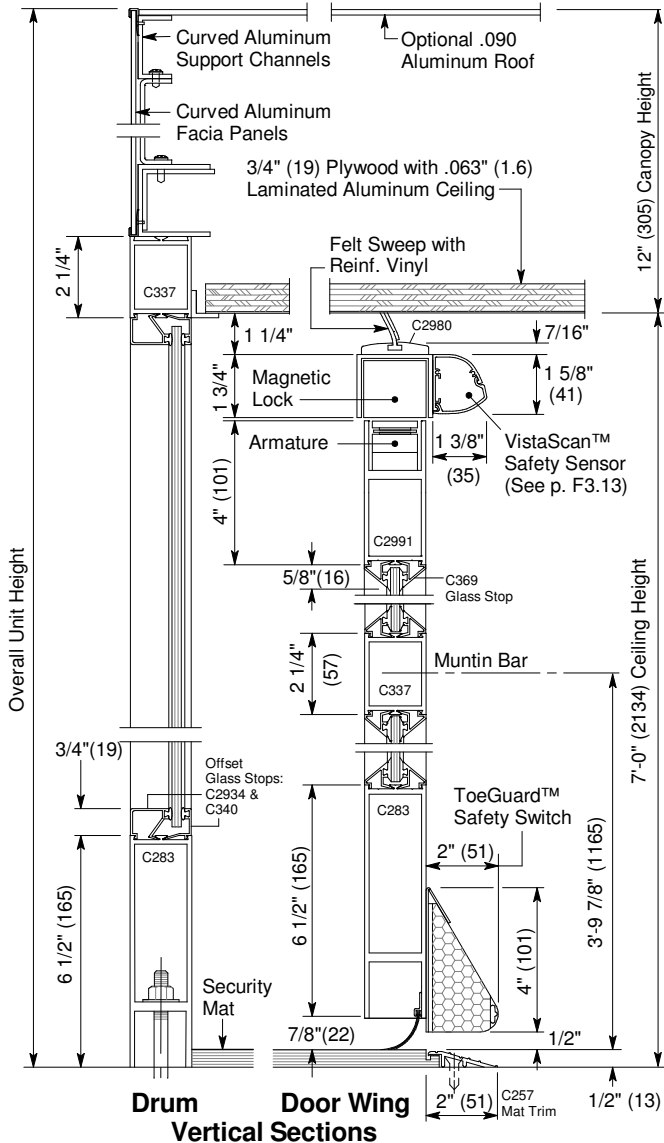
- Door unit is surface mounted to finish floor (floor not to exceed 1/4" out of level). Unit is free-standing with no additional support required (See p. F1.1).
- Drum can be center connected to adjacent construction or at entry vertical rails (See p. F1.2). Allow 1/4" shim space each side & at canopy. Adjacent construction not to bear down on door unit.
- Electrical: Provide 120 VAC, 15 amp service on a dedicated 20 amp circuit breaker routed to power operator mounted within the enclosure canopy.

Operation

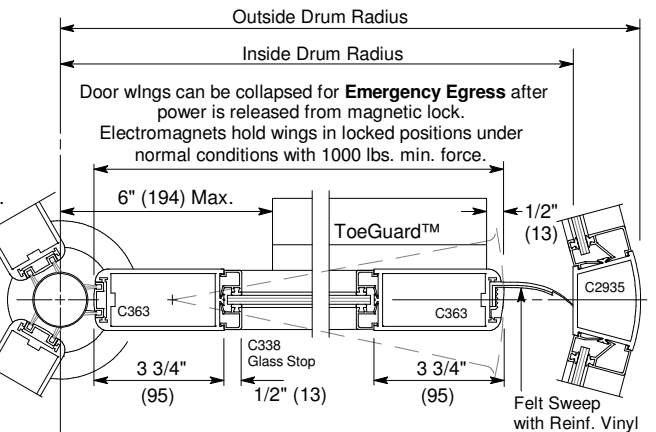
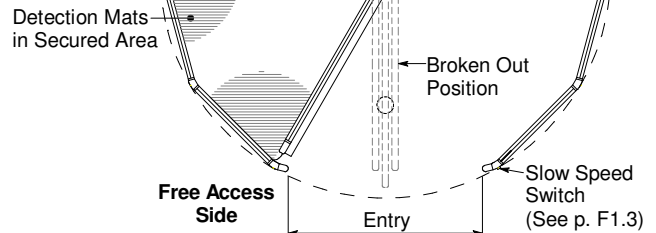
- Traffic is allowed to pass unrestricted from one direction and controlled from opposing direction. Motion sensor at free access side starts wing rotation on user approach at 2-4 RPM. Passage into unauthorized area will cause door to ramp to a stop, lock and announce security violation. Door then rotates to allow secure area to be cleared. Fail-safe design provides full operation for 2 hours in the event of power failure.



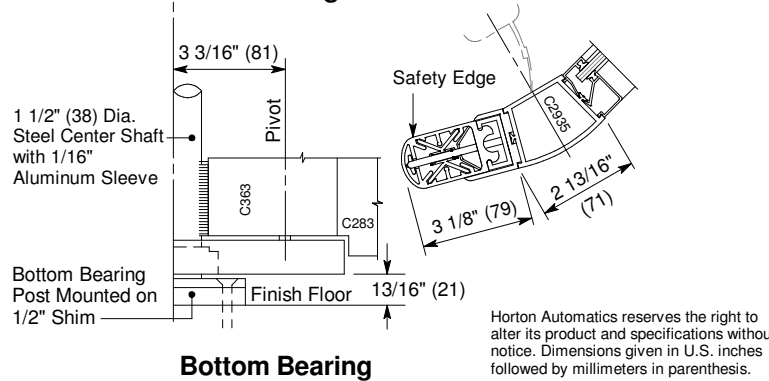
Floor Plan and Exterior Elevation



Drum Door Wing Vertical Sections



Door Wing and Drum - Horizontal Section



Bottom Bearing

Horton Automatics reserves the right to alter its product and specifications without notice. Dimensions given in U.S. inches followed by millimeters in parenthesis.