



® 4242 Baldwin Boulevard
 Corpus Christi, Texas
 USA 78405-3399
 Tel: 800-531-3111, 361-888-5591
 Fax: 800-531-3108, 361-888-6510
 www.hortondoors.com
 The Automatic Choice

ARCHITECTURAL DETAILS

SECURITY REVOLVING DOOR ENTRANCES WITH OBJECT DETECTION

ControlFlow® 1-Way Airport Security Series 9131AP

F9.2

Type: 3-Wing with Segmented® Drum, Round Canopy

Nov 17

Standard Packages

Nominal Outside Diameter	Inside Diameter	Entry	Rough Opening Width x Height
12'-0" (3658)	11'-8 1/2" (3569)	5'-3 3/4" (1619)	12'-0 1/2" (3670) x 8'-0 1/4"
Overall Unit Height: 8'-0" (2438)			Anodized Finish: Clear or Dark Bronze
Ceiling Height: 7'-0" (2134), Canopy Height: 12" (305)			
Glazing: Standard unit prep'd for 1/4" (6) glass. Glass by others.			

- Options**
- Extended or cropped canopy
 - Ceiling height up to 8'-0"
 - Inactive mats (non-secure areas)
 - Custom anodized or paint finish
 - Aluminum roof

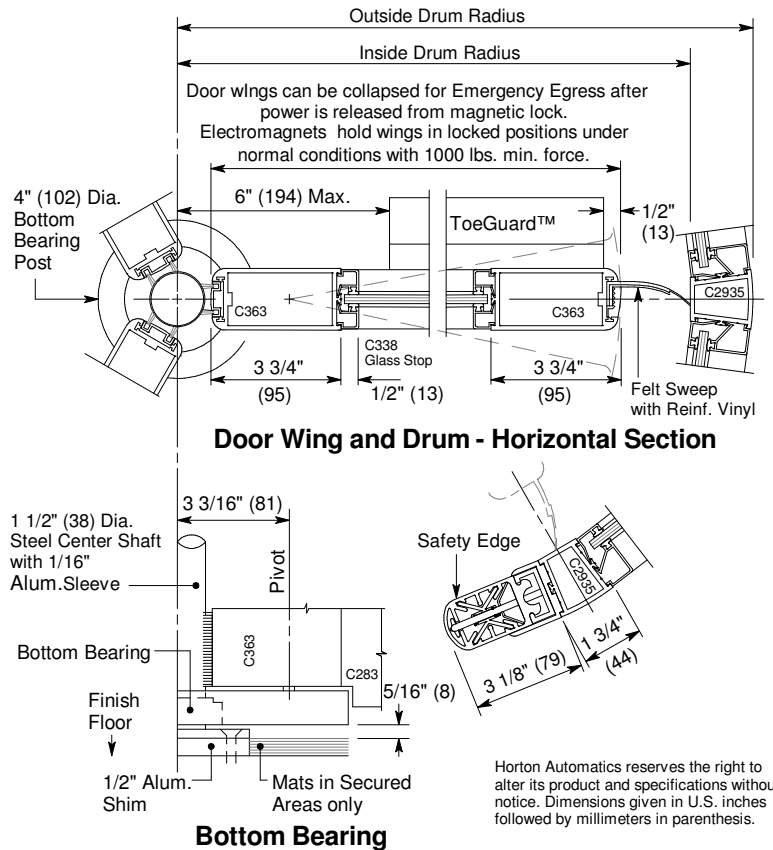
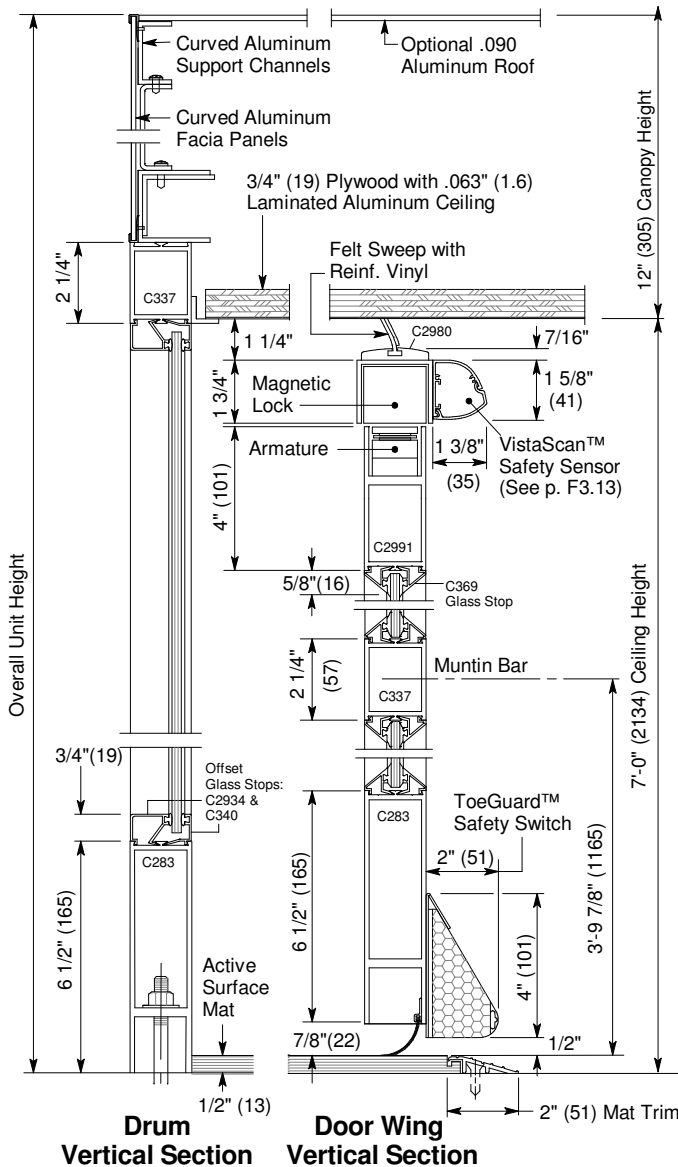
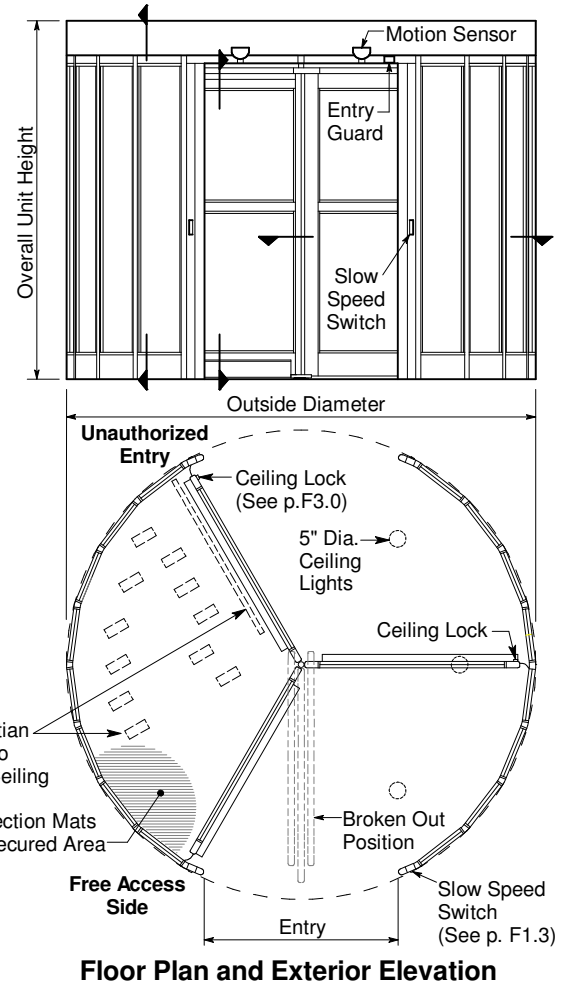
For more standards & options see Architectural Specs and Spec Details.

Installation

- Door unit is surface mounted to finish floor (floor not to exceed 1/4" out of level). Unit is free-standing with no additional support required.
- Drum can be center connected to adjacent construction or throat connected (at entry vertical rails) (see p.F1.2). Allow 1/4" shim space each side & at canopy. Adjacent construction not to bear down on door unit.
- Electrical: Provide 120 VAC, 15 amp service on a dedicated 20 amp circuit breaker routed to power operator mounted within the enclosure canopy.

Operation - Object Detection

- Traffic is allowed to pass unrestricted from one direction and controlled from opposing direction. Object Detection System prevents entry of objects from unauthorized side. Motion sensors at free access side starts wing rotation on user approach at 2-6 RPM. Passage into unauthorized area will cause door to ramp to a stop, lock and announce security violation. Door then rotates to allow secure area to be cleared. Fail-safe design provides full operation for 2 hours in the event of power failure.



Horton Automatics reserves the right to alter its product and specifications without notice. Dimensions given in U.S. inches followed by millimeters in parenthesis.