



© 4242 Baldwin Boulevard
 Corpus Christi, Texas
 USA 78405-3399
 Tel: 800-531-3111, 361-888-5591
 Fax: 800-531-3108, 361-888-6510
 www.hortonddoors.com
 The Automatic Choice

ARCHITECTURAL DETAILS

SECURITY REVOLVING DOOR ENTRANCES

ControlFlow® 2-Way Card Access Security
Series 9240 Visdom ELITE® Anti-Piggyback / Anti-Tailgate
Type: 4-Wing with Round Drum

F9.9

June 17

Standard Packages

Nominal Inside Drum Diameter	Outside Drum Diameter	Canopy Diameter	Entry	Rough Opening Width (at Canopy) x Height
6'-0" (1830)	6'-3 1/2" (1920)	6'-4" (1930)	3'-10 7/8" (1191)	6'-4 1/2" (1943) x 8'-0 1/4" (2445)
6'-6" (1981)	6'-9 1/2" (2070)	6'-10" (2083)	4'-3 1/8" (1299)	6'-10 1/2" (2096) x 8'-0 1/4" (2445)
7'-0" (2134)	7'-3 1/2" (2223)	7'-4" (1930)	4'-7 3/8" (1406)	7'-4 1/2" (2248) x 8'-0 1/4" (2445)

Overall Unit Height: 8'-0" (2438) **Ceiling Height:** 7'-0" (2134) **Canopy Height:** 12" (305)
Glazing: Standard door wings prep'd for 1/4" (6) glass. Glass provided by others.
 Standard drum provided with 7/16" clear laminated curved glass.

Anodized Finish:
 Clear or Dark Bronze

- Options**
- Ceiling lights
 - Extended or cropped canopy
 - Prep up to 1" glazing
 - Aluminum roof
 - Custom anodized or paint finish
 - Active & Inactive mats

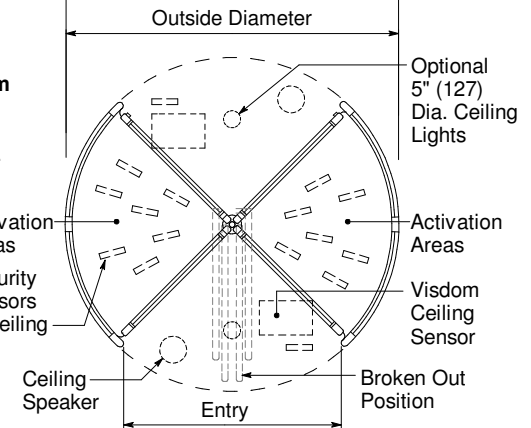
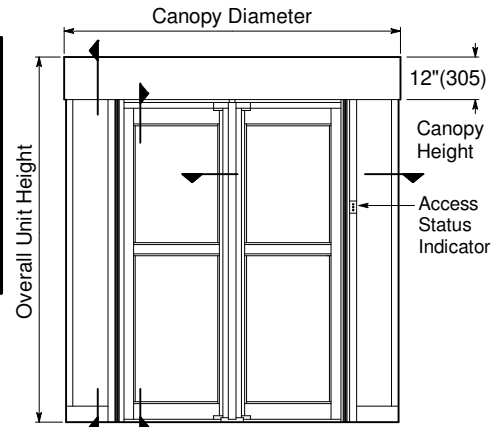
Installation

- Door unit is surface mounted to finish floor (floor not to exceed 1/4" out of level). Unit is free-standing with no additional support required.
- Drum can be center connected to adjacent construction or throat connected (at entry vertical rails. See p.F1.2). Allow 1/4" shim space each side & at canopy. Adjacent construction not to bear down on door unit.
- Electrical: Provide 120 VAC, 15 amp service on a dedicated 20 amp circuit breaker routed to power operator mounted within the enclosure canopy.

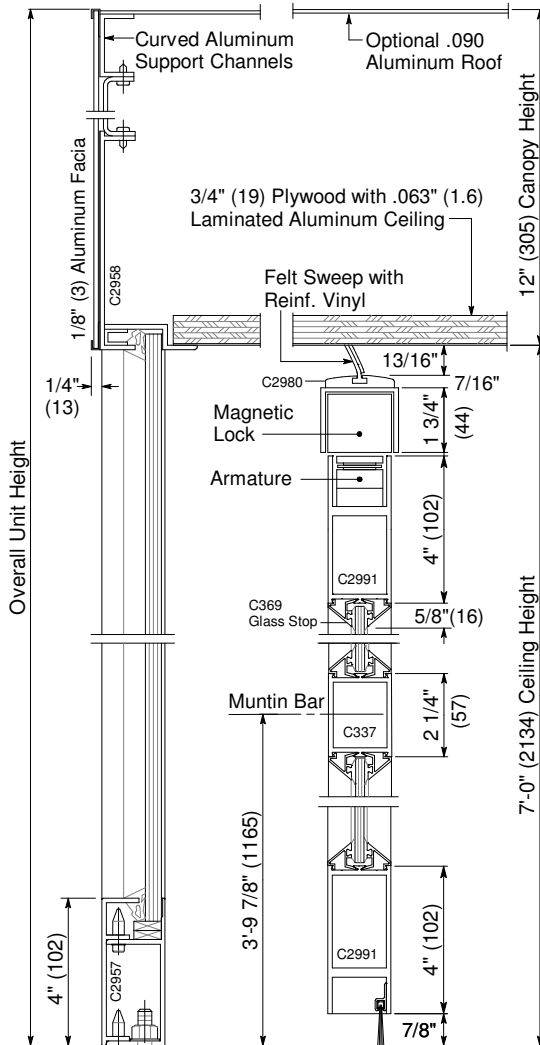
Operation

- Traffic is controlled from both directions. An Access Control System device (by others) is required at each entrance to obtain passage authorization. **Authorization will allow door rotation and access based on mode of operation selected. Visdom ELITE® system will detect piggybacking and tailgating violations.** Unauthorized passage will cause door to stop and announce security violation. Door rotates back to clear secure area then resumes normal rotation. Fail-safe design provides full operation for 2 hours in the event of power failure.

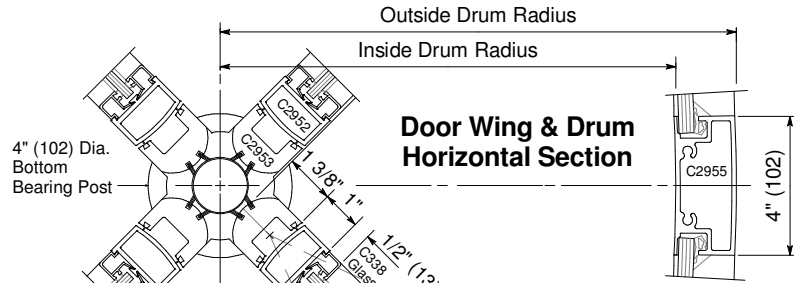
Note: Mode of operation can be in either 'x' position (shown) or '+' position.



Floor Plan & Exterior Elevation

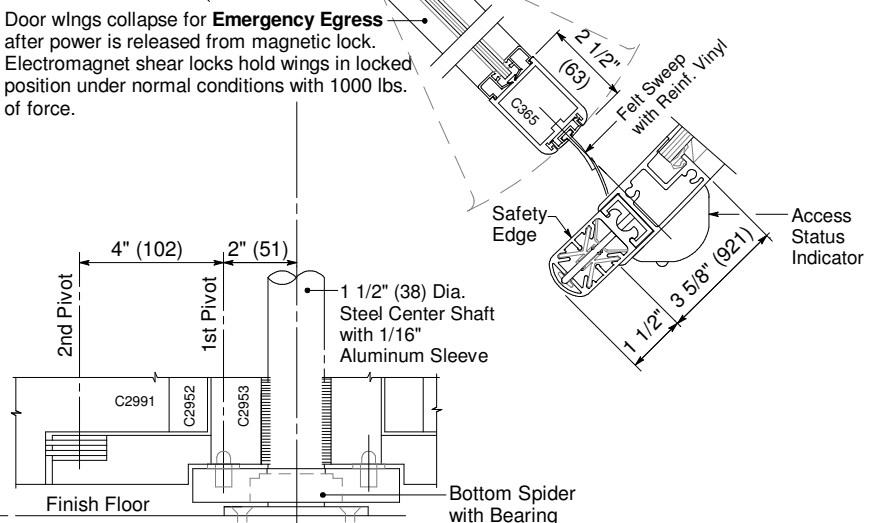


Drum Door Wing Vertical Sections



Door Wing & Drum Horizontal Section

Door wings collapse for **Emergency Egress** after power is released from magnetic lock. Electromagnet shear locks hold wings in locked position under normal conditions with 1000 lbs. of force.



Bottom Bearing

Horton Automatics reserves the right to alter its product and specifications without notice. Dimensions given in U.S. inches followed by millimeters in parenthesis.