



# Horton Automatics

4242 Baldwin Boulevard  
 Corpus Christi, Texas 78405-3399 USA  
 Tel: 800.531.3111, 361.888.5591  
 Fax: 800.531.3108, 361.888.6510  
 Internet: <http://www.hortondoors.com>  
*'The Automatic Choice'*

# ARCHITECTURAL DETAILS

## PEDESTRIAN EXIT LANE SECURITY SYSTEM

**SEL™ Secure Exit Lane**  
 1-Way Security Control with Directional  
 Control and Object Detection

**H13.01**  
**AUG18**

### Standard Packages

Overall Unit Length	Overall Unit Width	Distance Between Doors (Corridor)	Overall Unit Height	Clear Door Opening
21'-0" (252") [6.40m]	5'-3" (63") [1.60m]	16'-0" (192") [4.87m]	7'-6" (90") [2.28m]	3'-6" (42") w 7'0" (84") h [1.06m] x [2.13m]
<b>Finish:</b> 204-R1 Clear Anodize. <b>Roof:</b> Optional Aluminum Roof Sections- Cover Top of Roof. <b>Glazing:</b> Door Panels- 1/4" Tempered, Exit Lane Walls- 3/8" Tempered. Optional Bullet Resistant Glazing Only (1-5/16"), Door and Exit Lane Glass. <b>Door Panel:</b> Narrow Stile with 4" Bottom Rail. Optional Wide Stile 10" Bottom Door Rail.				

### Installation

- Electrical: 120 VAC, 60 Hz, 15 Amp Service on a dedicated circuit.
- Frame Opening: Overall Width plus 1/4" Shim at each Jamb; Overall Height plus 1/4" Shim at Header.
- Note: The Secure Exit Lane is an Independent Unit that must not be subjected to additional structural load-bearing forces.
- Floor Area at installation location must be smooth and level.
- Installation of SEL must be performed by qualified technicians trained by Horton Automatics (the Manufacturer).

See details for options beginning on p. H3.07 and Architectural Specifications on page H01.01.

### Operation

The Security Exit Lane (SEL) manufactured by HORTON Automatics, is a Breach Control Secure Exit Lane System that directs pedestrian traffic in one direction and inhibits traffic in the opposing direction.

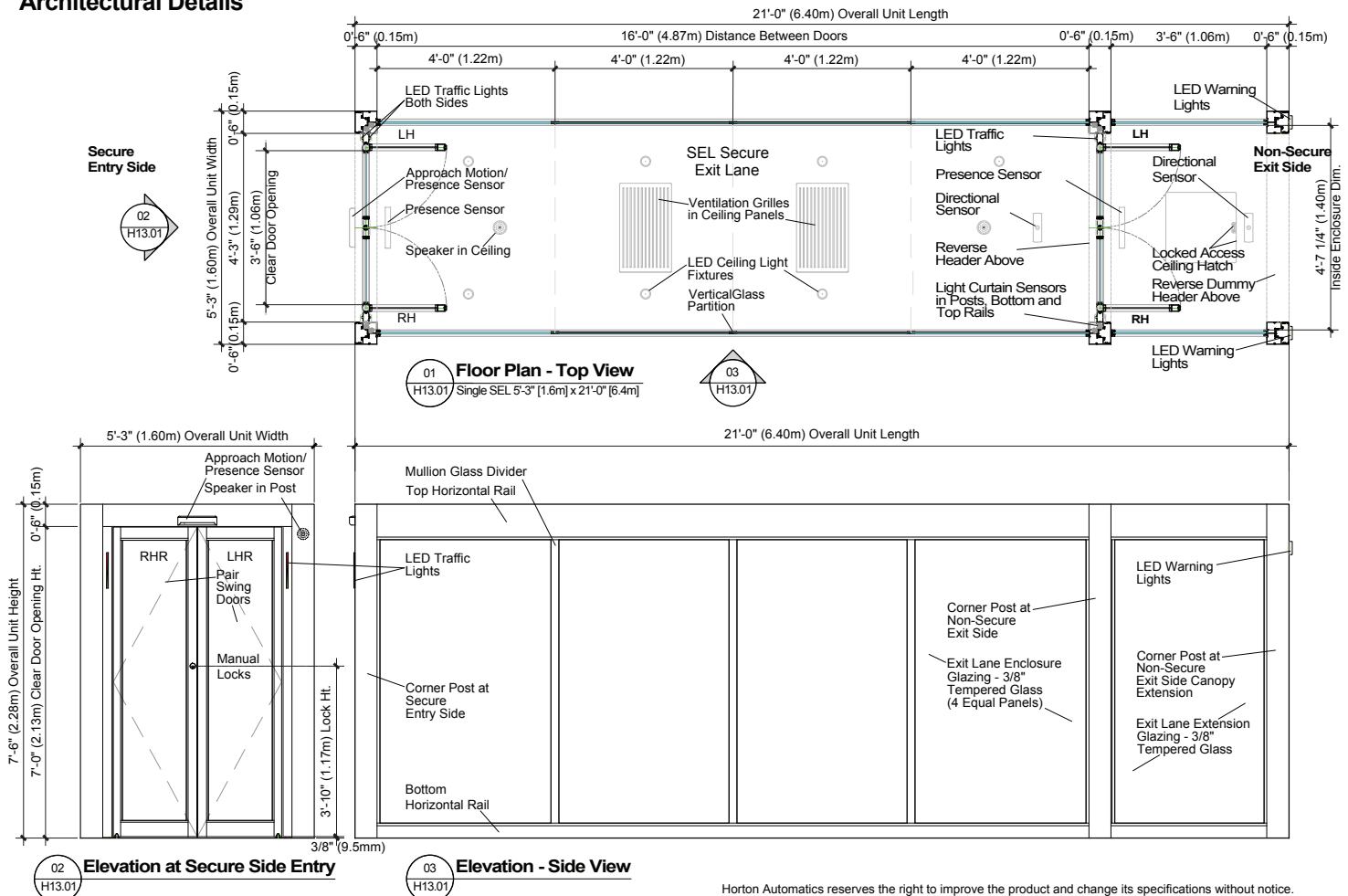
The SEL consists of a pair of automatic swing doors for both the Entry and Exit side, an enclosed glass exit lane between the two pair of doors and a canopied area beyond the Exit Door. Visual LED traffic light fixtures and audio annunciators provide assistance in directing pedestrians through the SEL.

A series of motion, presence, directional and light curtain detection sensors combine to provide the ultimate security against unauthorized breach into a secure area.

### Features

- Pedestrian Traffic Detection: Presence, Directional (Wrong-Way).
- Static Object Detection: Floor, Ceiling, and Walls.
- LED Corridor Lighting: Eight Recessed Ceiling Mounted.
- LED Green/Red Traffic Lights: Located at each door.
- Voice Annunciation Warnings: Speakers in Ceiling and Jamb.
- Remote Monitoring.
- Internal Uninterruptible Power Supply.
- Ceiling: Aluminum Clad on 3/4" Plywood.
- Locks: Maximum Security Manual Locks and Automatic Electric 'Fail-Secure' Door Locks.
- 3-Position Keyswitch: Mode Select, Operation, and Alarm Clear.
- 5 Modes of Operation: Locked, Open, Free Flow, Interlocked, and Cleaning.

### Architectural Details



Horton Automatics reserves the right to improve the product and change its specifications without notice. Dimensions given in U.S. Inches followed by Meters in parenthesis or as noted.