

Isolation Room Door Systems For Airborne Infection Control

Automatic or Mechanical Self-Closing Packages



Used for Negative, Positive & Combination Pressure Rooms

Today, architects design rooms specifically for airborne infection isolation control as part of a focused healthcare initiative to reduce the risk of nosocomial infections. Meeting the requirements of the 2010 FGI* Guidelines for Airborne Infection Isolation Rooms, Horton now offers two door systems to address these needs.

The automatic self-closing 2000-IDS is designed with perimeter seals and touchless sensor or push plate for “knowing act” activation. The alternative mechanical Self-Closing IDS opens manually and then self-closes. The Self-Closing IDS also has a positive latch and requires no electrical power.

Additional benefits include:

- Tested to ASTM E 283-04 to meet negative, positive, or combination room pressure requirements
- 8' 6" to 9' unit widths
- Clear opening widths up to 48"
- Full breakout opening up to 8' 3"
- Unlimited design and finish options



Specify Horton and demand AAADM certified installation

AAADM American Association of Automatic Door Manufacturers



Knowing Act Activation

Touchless sensor or push plate activation with automatic self-closing.
2000-IDS shown above



Mechanical Self-Closing

Manual opening with self-closing and positive latching.
Self-Closing IDS shown above



Tested Perimeter Seals

Reduces risk of nosocomial infections and is in compliance with the 2010 FGI guidelines for Airborne Isolation Infection Rooms (AIIR).

Self-Closing IDS shown above

*Facilities Guidelines Institute



These products meet the 2010 Facility Guidelines Institute requirements on Airborne Infection Isolation Room design.



Isolation Room Door Systems For Airborne Infection Control

Automatic or Mechanical Self-Closing Packages

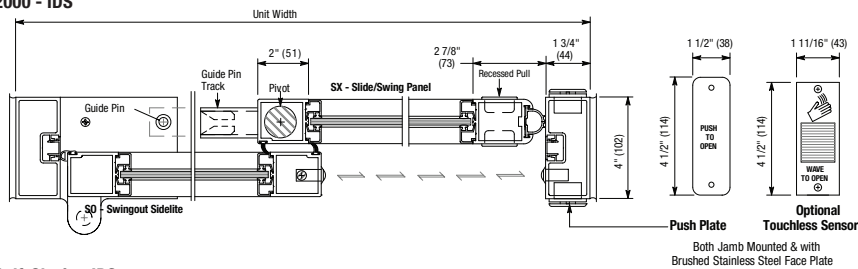
Automatic or manual airborne infection isolation room door systems. Available for rough opening sizes ranging from 7' to 9'.

Architectural Details

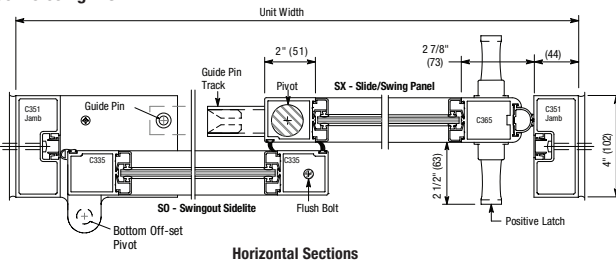
Type 310

Door slides to the interior of fixed sidelite and allows largest breakout area for moving patients and equipment.

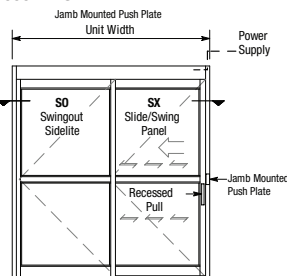
2000 - IDS



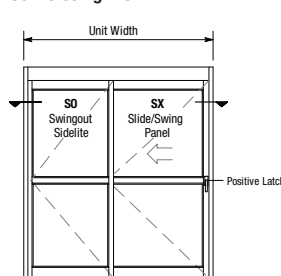
Self-Closing IDS



2000 - IDS



Self-Closing IDS



Exterior Elevations

Selection Guide

Model	Type	Unit Width	Max. Clear Opening	Type 310 Breakout Opening
AIIR	2000-IDS*	8' 6" to 9' (2591-2743)	3' 9" to 4' (1143-1219)	7' 9" to 8' 3" (2362-2515)
	Self-Closing IDS*	9' (2743)	3' 8 7/8" (1140)	8' 3" (2515)

Standard Unit Height: 7' 6"

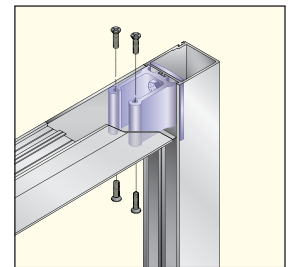
* Contact factory for smaller sizes

Construction



Breakout Panels

All panels break out for emergency egress.



Corner Block Design

Adding structural integrity and longevity, all ICU/CCU door panels feature the same rugged corner block construction as Horton automatic sliding doors. This mortise-style corner block construction is far superior to mass produced through-bolt panels.

Other Horton Solutions

View the Horton Healthcare Door Systems Video with your smart phone to see examples of Airborne Infection Isolation Room Door Systems.



Applications

- Pediatric Care
- Intensive Care
- Intermediate Care
- Critical Care
- Newborn Intensive Care
- Nursery Unit
- Biohazard Rooms

Did You Know?



In the United States, there is a -2.5 Pascal negative pressure differential requirement and in Canada, -8.0 Pascal for airborne infection isolation rooms



Horton Automatics
World Headquarters
 4242 Baldwin Boulevard
 Corpus Christi, Texas 78405-3399 USA
 Phone: 800-531-3111, 361-888-5591
 Fax: 361-888-6510
www.hortondoors.com

Horton Automatics, Ltd.
United Kingdom
 Unit A, Hortonwood 31
 Telford, Shropshire, England TF1-7YZ
 Phone: 01952 670169
 Fax: 01952 670181



A Division of
Overhead Door Corporation
 A Sanwa Holdings Company