

ProSlide ICU LE

Series 2003T-IDS Low-Energy, Belt-Drive System



Widest access plus smoke protection

This low-energy, belt-driven telescoping ICU/CCU door technology introduces a wider range of architectural options and greatly enhances accessibility for moving patient beds and medical equipment. With its telescoping function and full break-out capability, the door package can provide up to 84 inches of clear opening width in a full 12-foot system. Designed to meet requirements for a negative, positive and combination pressure room. For the ultimate in patient safety, this system **exceeds smoke protection standards UL 1784 and NFPA 105.**

Additional benefits include:

- Electric strike
- Custom sizes for door openings ranging from 7' 6" to 12' with unlimited finish options
- Trackless design for easy clean up and unobstructed clear opening
- Antimicrobial positive latching handles standard for added safety and superior smoke seal
- Concealed high-temperature weather strip and gasket design for smoke rating
- Antistatic option
- Compatible with Knowing Act activation for low-energy applications or activation sensors for full-power applications



Telescoping

Trackless

Positive Latch



**Smoke-Rated –
UL1784 Air Leakage Certified**



**Infection Isolation –
2018 FGI Guidelines**



Infection Control

- Standard feature – Antimicrobial positive latch handle
- Optional feature – Door package antimicrobial finish
- Maximizing the accessible opening width while offering **full interlock seals** for smoke protection, this ICU/CCU door system sets a new standard for **patient safety.**

ProSlide ICU LE

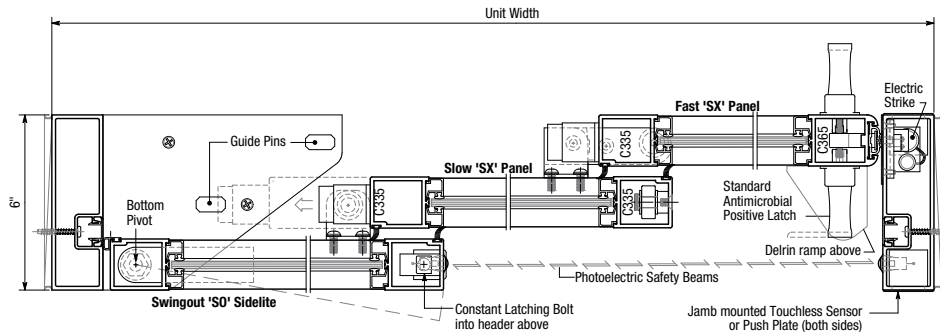
Series 2003T-IDS Low-Energy, Belt-Drive System

The 310T series door system is designed specifically for the critical care environments of ICU/CCU operations. Patients are in full view when doors are closed. Two moving panels slide open smoothly with one-hand operation to provide wide clearance for beds and equipment. Designed to comply with the ANSI A156.38 Standard for Low Energy Power Operated Sliding and Folding Doors.

Architectural Details

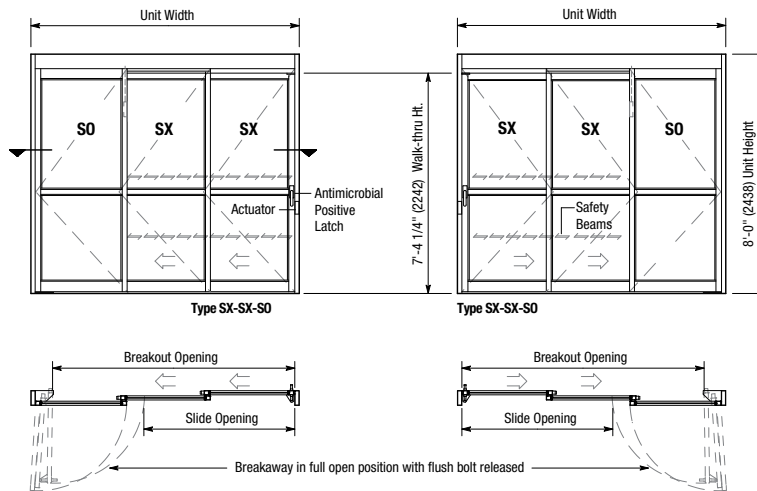
Type 310T Trackless – Full Breakout

Allows larger breakout area for moving wide objects. Doors slide to the interior of fixed sidelites.



Horizontal Section

S0-SX-SX shown. SX-SX-S0 opposite.



Exterior Elevations and Floor Plans

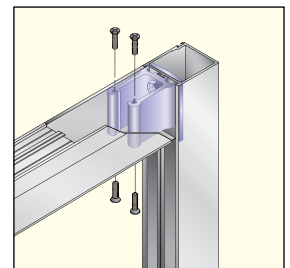
Selection Guide				
Model	Type	Unit Width	Max. Slide Opening	Breakout Opening
2003T-IDS	Single Slide IDS	7'6"	4' 3/16"	6' 6-5/8"
		8'	4' 4-3/16"	7' 5/8"
		9'	5' 3/16"	8' 5/8"
		10'	5' 8-3/16"	9' 5/8"
		11'	6' 4-3/16"	10' 5/8"
		12'	7' 3/16"	11' 5/8"

Construction



Full Breakout Panels

All panels break out for wider access.



Corner Block Design

Adding structural integrity and longevity, all ICU/CCU door panels feature the same rugged corner block construction as Horton automatic sliding doors. This mortise-style corner block construction is far superior to mass produced through-bolt panels.



Horton Automatics
World Headquarters
 4242 Baldwin Boulevard
 Corpus Christi, Texas 78405-3399 USA
 Phone: 800-531-3111, 361-888-5591
 Fax: 361-888-6510
www.hortondoors.com

Overhead Door Corporation
 A Sanwa Holdings Company

