



AUTOMATIC AND MANUAL DRIVE-THRU SERVICE WINDOW

OWNER'S MANUAL

Contents

What You Should Know	2
Limited Warranty	2
Circuit Breaker & On/Off Switch	3
Window Autolock	3
Maintenance & Safety	4

What You Should Know

Installer/distributor to provide the following after installation:

1. Instructions on how to conduct the "Daily Safety Check".
2. Location of function switches and instruction in their use.
3. Location of power disconnect.
4. Discussion of problems that could result from window being allowed to operate after a malfunction is observed.

NOTE: If there are any problems, **discontinue window operation immediately** and secure in a safe manner. Call your local distributor for repair.

5. Warranty Information:

_____ Phone number to call regarding problems or request for service

_____ Date equipment shipped from Horton plant

_____ Date equipment placed in service

_____ Horton Automatics' invoice number for Warranty reference and repairs

_____ Equipment type (door series) & Accessories _____

Limited Warranty and Related Information

Horton Automatics (Seller) warrants to the Buyer all products they manufacture to be free from defects in material and workmanship, under normal use and service, for twelve months from the date product is placed in operation. The Seller's obligation under this warranty is limited to the repair or replacement at the factory, of any parts which shall be returned to the Seller with transportation charges prepaid and which after examination, prove to be defective. Said warranty shall not apply to such products which shall have been installed, altered, or repaired by any person not expressly authorized in writing for such purpose by the Seller, or subjected to misuse, negligence or accident. The aforesaid warranty is made expressly in lieu of other warranties, expressed or implied and in lieu of any other obligations or liabilities on the part of the Seller and the Seller neither assumes nor authorizes any person to assume for it any other liability or obligations in connection with the sale of such products to the Buyer.

There is no warranty of merchantability or fitness for any particular purpose, nor is there any warranty, expressed or implied, except as specifically stated above. seller shall not be liable for special or consequential damage, nor for claims of any third party against the buyer.

Generally, the installing distributor provides a one-year warranty covering the labor and transportation charges for defective parts replacement. If this is the customer's wish, it should be specified.

Circuit Breakers and On/Off Switches

A .5 amp circuit breaker is provided for each operator (see locations below). In the event of an electrical overload, the circuit breaker will automatically release and turn the operator off. The plunger may be reset after the problem is corrected.

Fig. 1 - Circuit Breaker & On-Off Toggle Switch Location (Bipart)

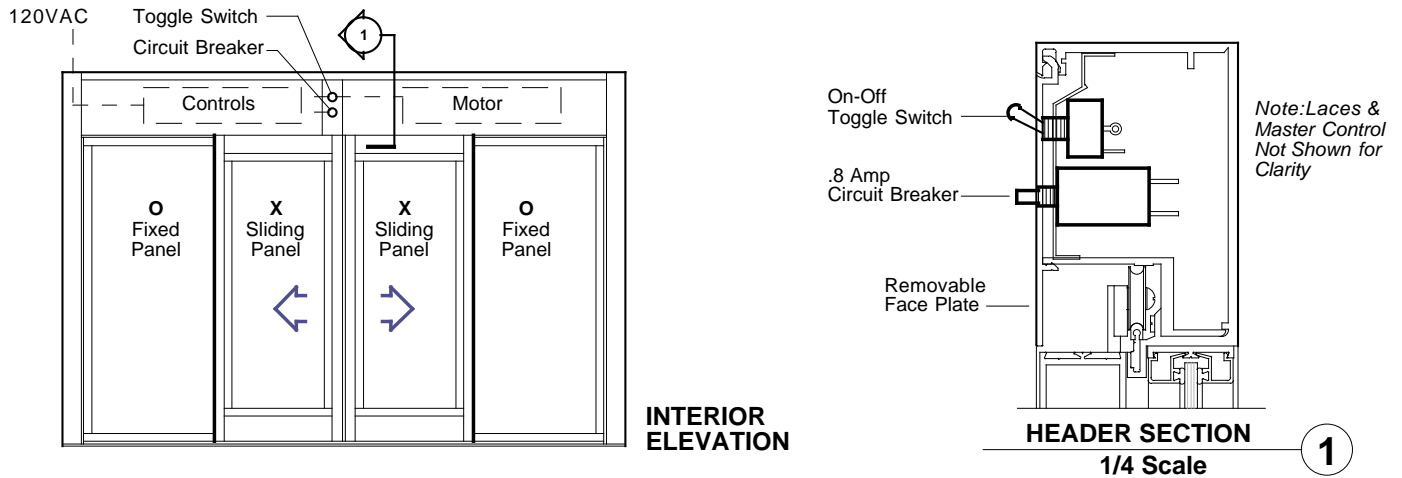
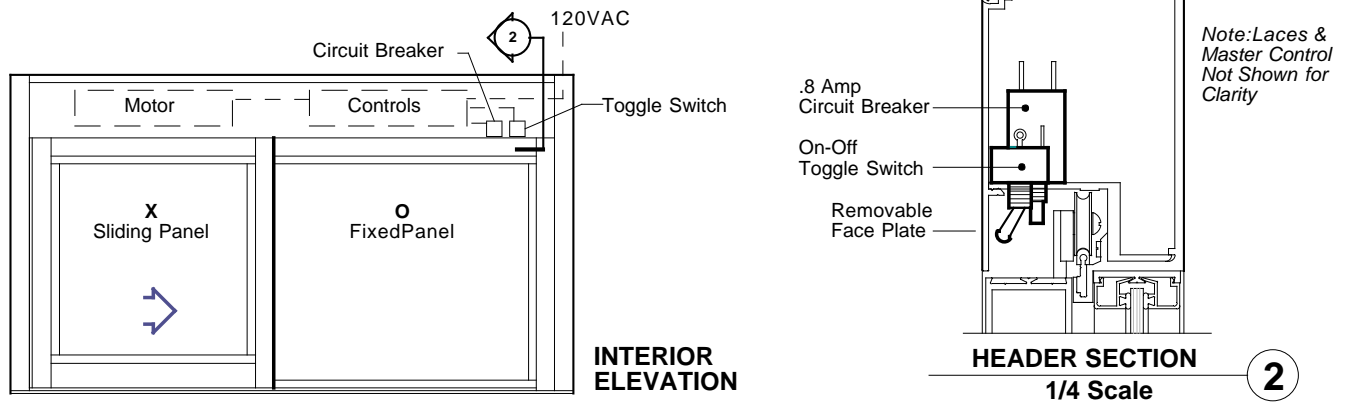


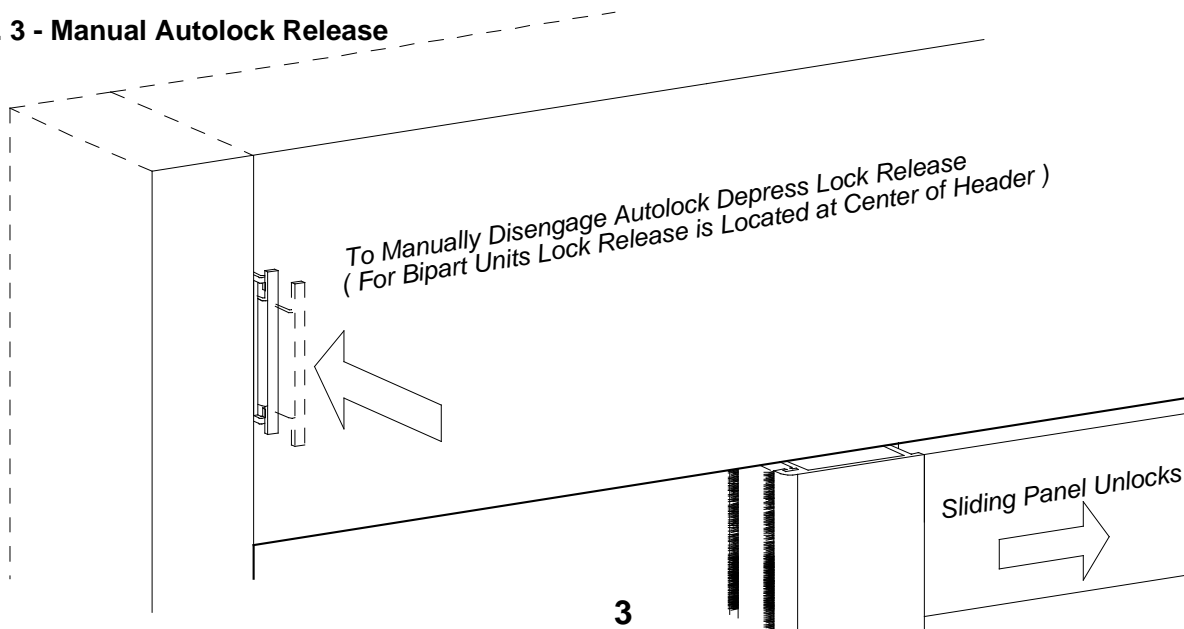
Fig. 2 - Circuit Breaker & On-Off Toggle Switch Location (Single Slide)



Window Autolocks

All window units are equipped with an automatic locking mechanism that, when properly adjusted, securely locks the window every time it closes. It unlocks only if the window is activated or if the lock release is depressed (see below).

Fig. 3 - Manual Autolock Release



Maintenance and Safety

Semi-annually the drive rod and drive rod bushings should be cleaned and lubricated with regular motor oil. The bearing block has two internal felt oilers which will pick up oil to the drive rod. The track and wheels should be replaced for wear and replaced if necessary.

Disconnect power before servicing window operator.

A Safety Check List is applied onto the jamb, just above the pushbutton. Carefully follow the recommendations on a **daily** basis.

Daily Safety Check

1. REVERSER - Place a 2" X 4" board or other solid object in the window path. The closing window should re-open after striking object.
2. AUTOMATIC CLOSING-
Window should close after opening signal is removed. Keep Path Clear.
3. AUTOMATIC LOCK-
Window should lock each time it closes. Test by trying to pull open.

If these features do not work, turn off window. Call a local Horton distributor or 1-800-531-3111. For your reference a Safety Check List is applied onto the jamb, just above the pushbutton. Carefully follow the recommendations on a daily basis.



Horton
A U T O M A T I C S

4242 Baldwin Boulevard
Corpus Christi, Texas 78405-3399
Tel: 361-888-5591
Fax: 361-888-6510
Toll Free in North America:
Tel: 1-800-531-3111
Fax: 1-800-531-3108

Internet:<http://www.hortondoors.com>

Horton Automatics, Ltd.
Unit A, Hortonwood 31
Telford, Shropshire
England TFI-7YZ
Tel: 01952 670169
Fax: 01952 670181
International Numbers:
Tel: ++44-1952-670169
Fax: ++44-1952-670181