



© Horton Automatics World Headquarters
 4242 Baldwin Boulevard
 Corpus Christi, Texas 78405-3399 USA
 Tel: 800-531-3111, 361-888-5591
 Fax: 800-531-3108, 361-888-6510
 www.hortondoors.com
 AUTOMATICS The Automatic Choice

ARCHITECTURAL DETAILS

MANUAL ICU / CCU ENTRANCES - AIRBORNE INFECTION CONTROL

Profiler®-ICU Self-Closing IDS

A10.31.2

Smoke Rated Manual Isolation Door System

Type: 110 Single Slide Surface Applied P-SX or SX-P

Aug 19

Standard Packages

Unit Width	Slide Opening	Breakout / Wall Opening	Slide Panel Width
8'-7" (2616)	3'-9 1/2" (1156)	4'-1" (1245)	4'-3 1/2" (1308)
9'-0" (2743)	4'-0" (1219)	4'-3 1/2" (1308)	4'-6" (1372)

Note: Consult factory for sizes smaller than 8'-7" (2616)

Unit Height: 7'-6" (2286)	Anodized Finish: Clear or Dark Bronze
Glazing: Standard unit prep'd for 1/4" (6) glass (by others)	See Arch. Specificatons. A22.1- 4

Compliant with:

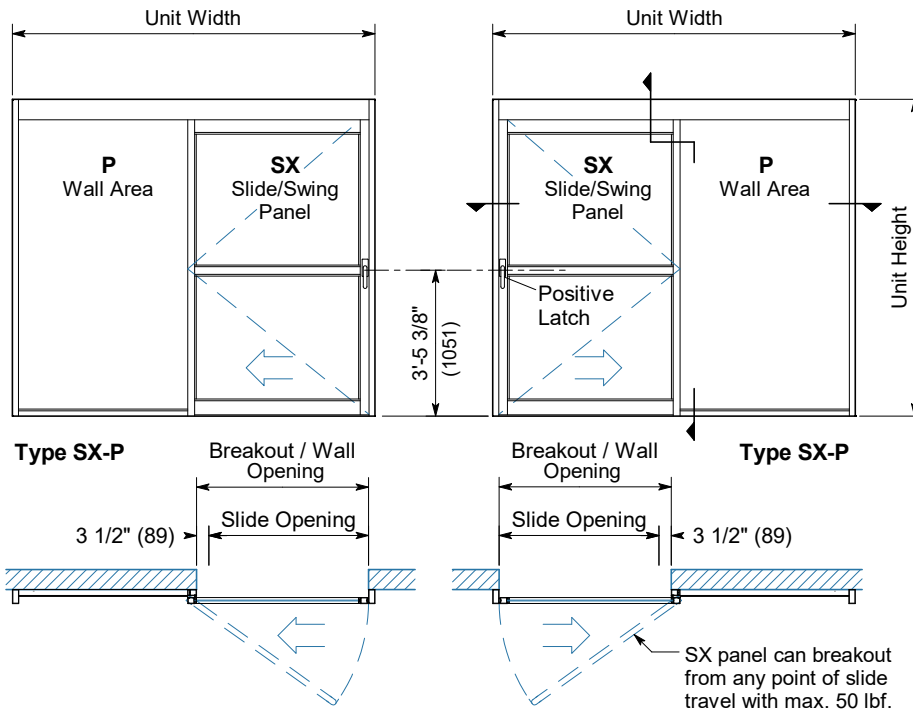
- 2018 FGI Guidelines for Airborne Infection Isolation Room Systems, Ref: A2.1-7.2.2.3 (2)(a)(i)
- ASTM E283-04 Standard Air Infiltration Test
 - Maintains positive/negative pressure
 - Perimeter seals factory installed
- UL 1784 Air Leakage Test of Door Assemblies
- NFPA 105 Std. for Installation of Smoke Door Assemblies

Options

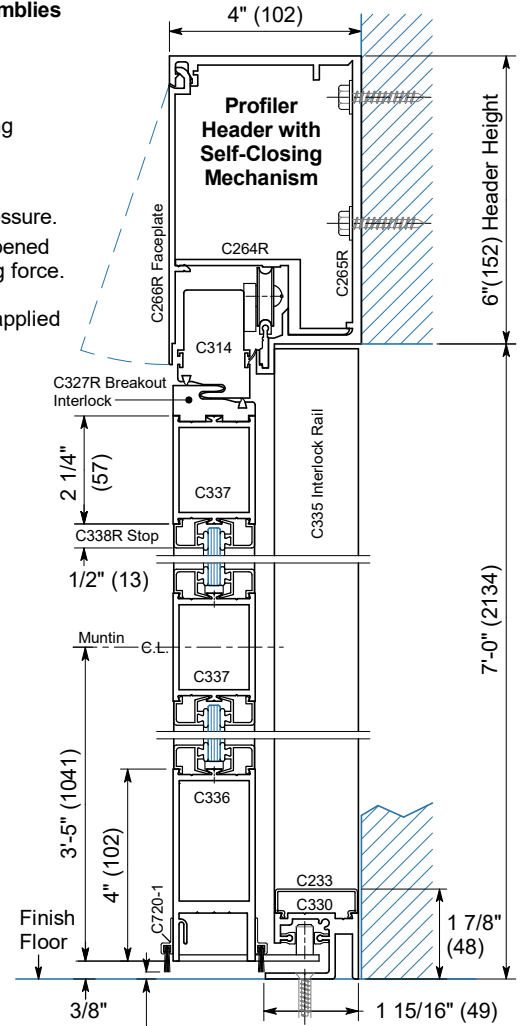
- Custom unit widths between 8'-7" & 9'-0"
- Glazing prep. 5/16" to 1 1/2"
- 6 1/2" or 10" Bottom rails
- Custom paint, anod. finish or Antimicrobial coating

Installation and Operation

- **Surface Mounted:** onto exterior finish wall. Finish floor not to exceed 1/4" out of level.
- **Field Applied Floor Seals:** 1/8" to 1/2" above finished floor as required for positive/negative pressure.
- **Opening Force:** Standard sliding panel (SX) glazed with 1/4" tempered glass (shown) can be opened with 8-12 lbs of force, after positive latch is released. Panel will then close with 6-8 lbs of closing force. Hold-Open shall engage when 8-12 lbs. of force is applied to panel in full open position. Panels can swing out 90° after positive latch is released requiring no more than 50 lbs of force applied at the strike stile.
- **Finger Safety:** When opening, sliding panel will stop 3 1/2" (89) short of adjacent sidelite.

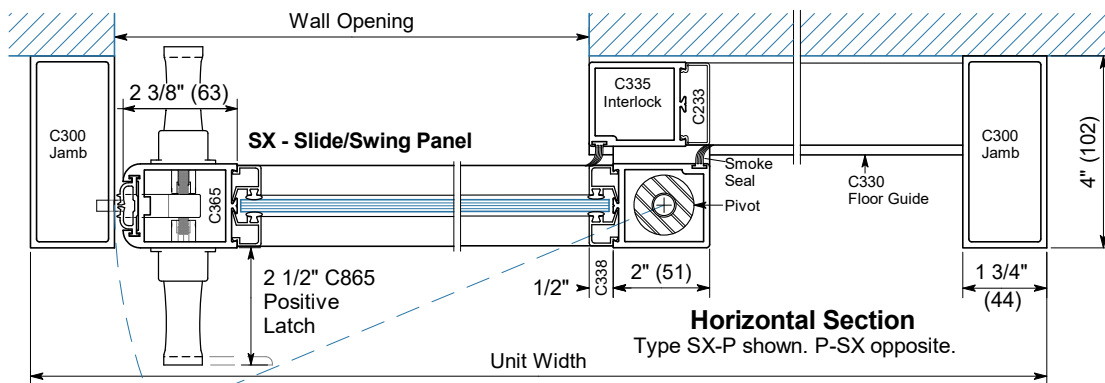


Exterior Elevations and Floor Plans



Vertical Section

Door shown in open position



Horizontal Section

Type SX-P shown. P-SX opposite.