



® 4242 Baldwin Boulevard
 Corpus Christi, Texas
 USA 78405-3399
 Tel: 800-531-3111, 361-888-5591
 Fax: 800-531-3108, 361-888-6510
 www.hortondoors.com
 The Automatic Choice

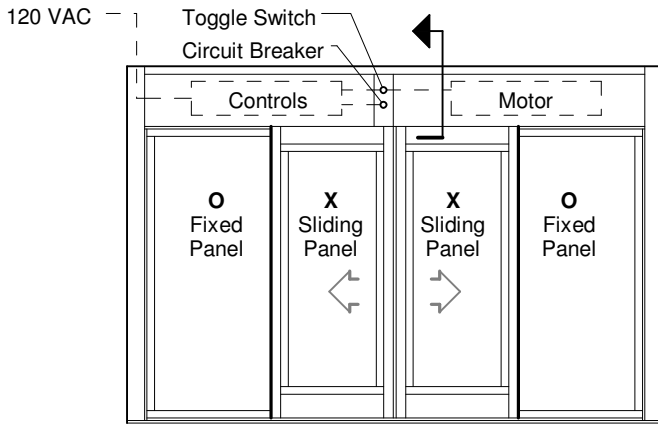
SPECIFICATION DETAILS

DRIVE-THRU SERVICE WINDOWS

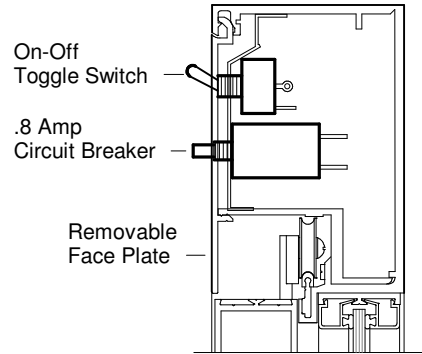
Typical Circuit Breaker and Toggle Switch Locations, Optional Low-Profile Header and Fly-Fan Provision

D3.1

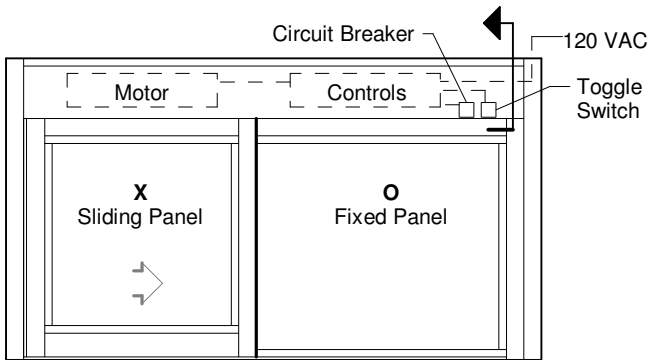
Oct 16



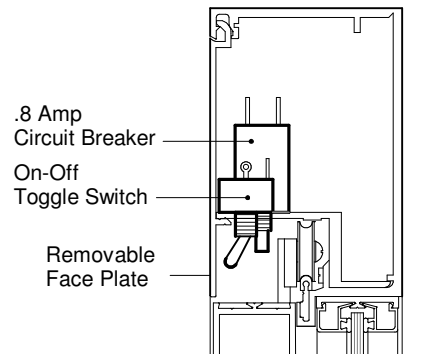
Interior Elevation- Bipart



Header Section - Bipart



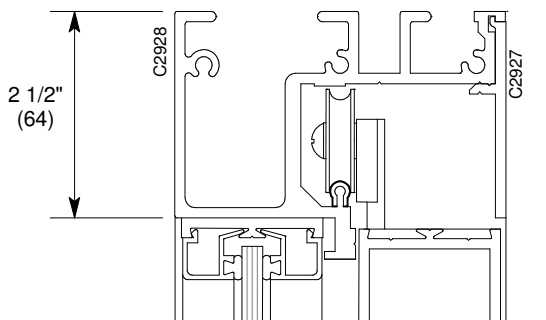
Interior Elevation- Single Slide



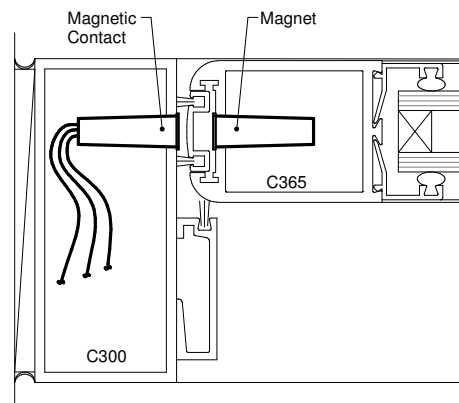
Header Section - Single Slide

CIRCUIT BREAKER & ON-OFF TOGGLE SWITCH LOCATION

In the event of an electrical overload, the circuit breaker will automatically release and turn the operator off. The plunger may be reset after the problem is corrected.



OPTIONAL LOW PROFILE
 HEADER FOR MANUAL UNITS



OPTIONAL PROVISION FOR FLY-FAN

Some installations require that a fly/insect suction fan be installed at or near the window opening. To meet such requirements, Horton provides magnetic reed switches that can be factory installed in automatic or manual window units for actuation of fly-fan when window is open. *Note: Fan and wiring by electrical contractor.*